



68 Shippam Street, Chichester

Guide Price **£275,000**

68 Shippam Street

Chichester, Chichester

- Quality second floor apartment
- City centre location
- West aspect
- Double bedroom
- Excellent decorative order
- New carpets
- Lift to all floors
- Allocated secure parking

A stunning apartment with cathedral spire views.

A beautiful west-facing second-floor apartment, perfectly positioned within the exclusive Roman Quarter development inside Chichester's historic city walls.

From both the sitting room and the double bedroom, you can enjoy view over the roof tops to Chichester cathedral spire. The apartment offers a bright and contemporary open-plan layout, designed with comfort, style, and practicality in mind.

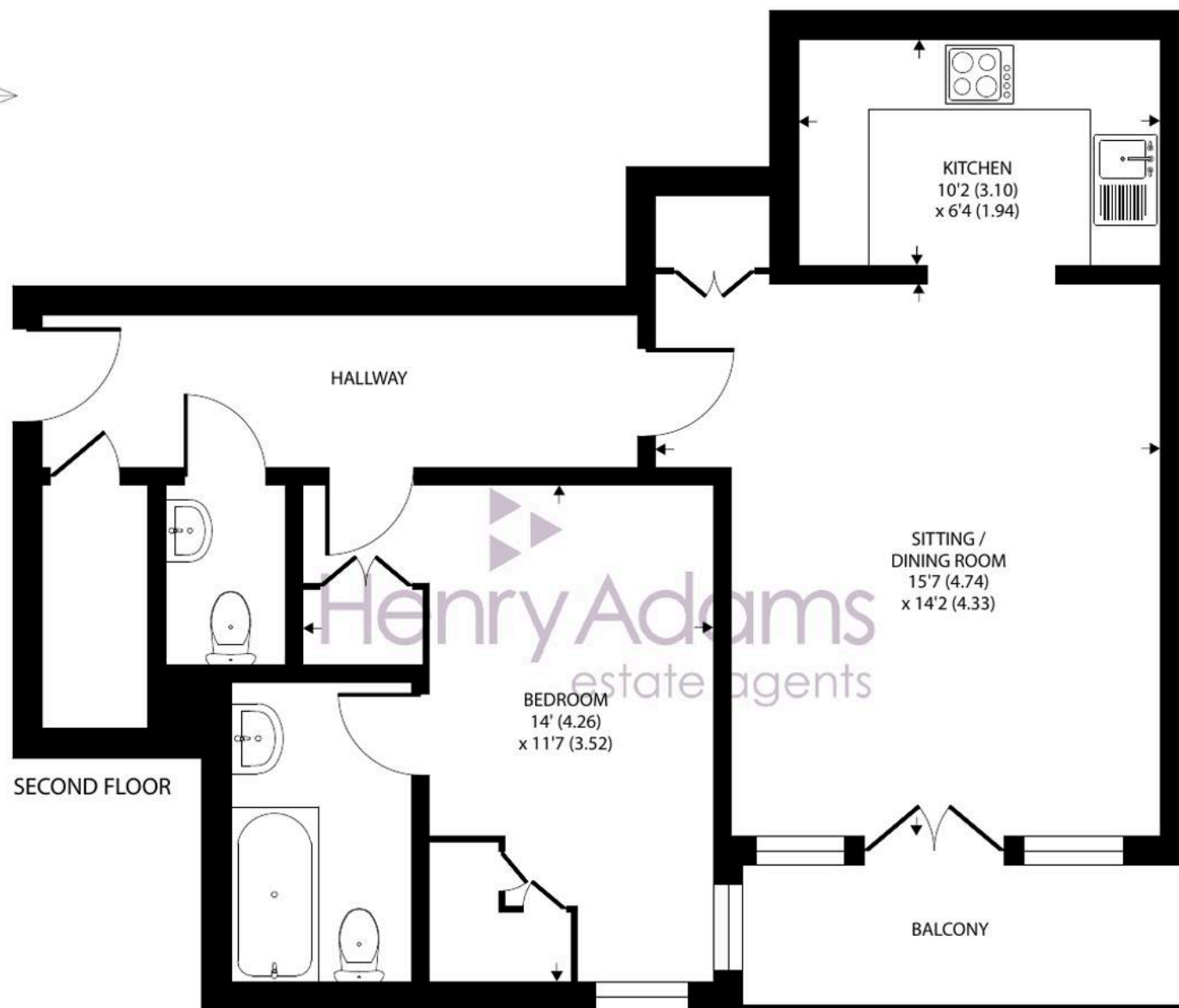
The modern kitchen comes fully equipped with integrated appliances, while French doors from the sitting room open onto a private balcony. The property also features a welcoming entrance hall, a cloakroom, and a spacious double bedroom with built-in wardrobes and an en-suite bathroom.

This exceptional apartment combines modern luxury with city convenience. It also includes a secure, gated underground parking space, and residents benefit from an on-site concierge service, a unique feature exclusive to the Roman Quarter development.

Lease: 137 years remaining







Approximate Area = 593 sq ft / 55 sq m

For identification only - Not to scale



You can include any text here. The text can be modified upon generating your brochure.

