



19 Tannery Close, Chichester, PO19 3EY

Offers in Excess of £250,000

19 Tannery Close, Chichester

Ground floor flat in close proximity to the city centre.

- Ground Floor Flat
- Private Entrance
- En Suite Shower Room
- Gas Central Heating

Introducing this charming ground floor two-bedroom flat boasting a private entrance and garage, available without any onward chain.

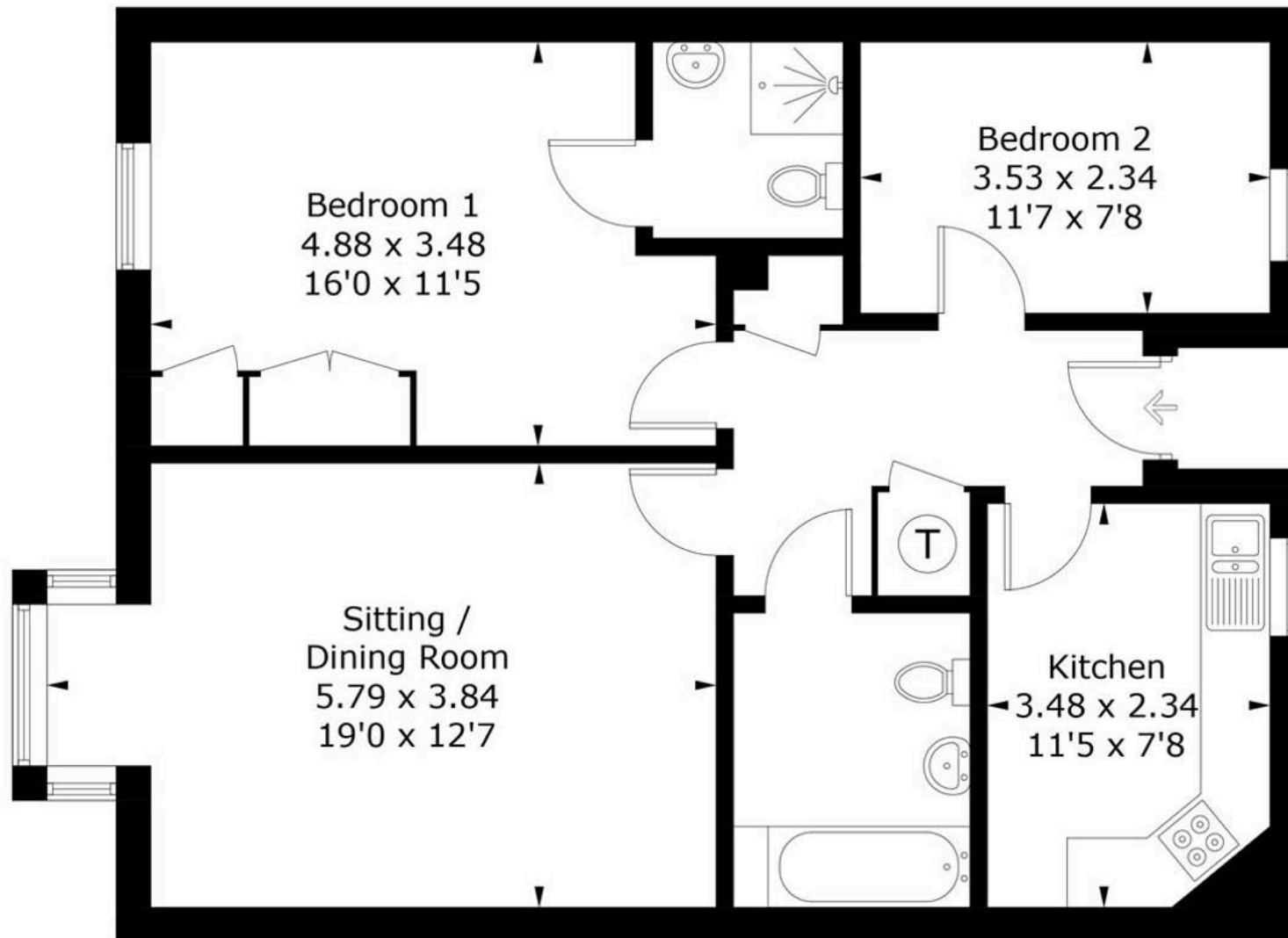
The property features a master bedroom with en suite shower room, providing a touch of luxury for its residents. The second bedroom offers flexibility for various living arrangements. With the convenience of gas central heating, this home ensures warmth and comfort all year round.

Situated in a desirable location, this property presents an excellent opportunity for those seeking a convenient and low-maintenance lifestyle. Don't miss out on the chance to make this flat your own, offering a perfect blend of comfort and practicality in a sought-after setting.



Tannery Close, PO19

Approximate Gross Internal Area = 72.3 sq m / 778 sq ft



Ground Floor

PRODUCED BY CHARLES PECK

Whilst every attempt has been made to ensure the accuracy of the floorplan, measurements of doors, windows and rooms are approximate. These plans are for representation purposes only as defined by RICS Code of Measuring Practice and used as such by any prospective purchaser. (ID1132606)

Location - The cathedral city of Chichester offers excellent high street shopping, many fashionable restaurants, cafes and bars, festival theatre and a mainline station to London Victoria. Goodwood is located to the north and is famous for its many event days including the world renowned Festival of Speed and Goodwood Revival for motor racing enthusiasts and a season of horse racing including the Qatar Goodwood Festival. There are excellent sailing facilities around Chichester Harbour and water sports from the beaches at West Wittering. The area is a paradise for wildlife enthusiasts, with beautiful walks and cycle tracks over the South Downs and around the harbour.

Directions - Proceed west from The Cross into Westgate. Tannery Close is the third turning on the left.

