



10 Tannery Close, Chichester

Guide Price £225,000

10 Tannery Close

Chichester, Chichester

Situated in a sought-after location west of Chichester City Centre, this one bedroom apartment offers a comfortable and convenient living environment. Boasting a double aspect first floor position, the property benefits from an abundance of natural light throughout the day, creating a bright and airy atmosphere.

The apartment features a well-appointed kitchen and a generously sized bedroom, providing ample space for comfortable living. Residents will also benefit from allocated parking and a secure bicycle store, adding to the convenience of the property.

In addition to its practical amenities, the apartment is set within a well-maintained development with communal grounds.

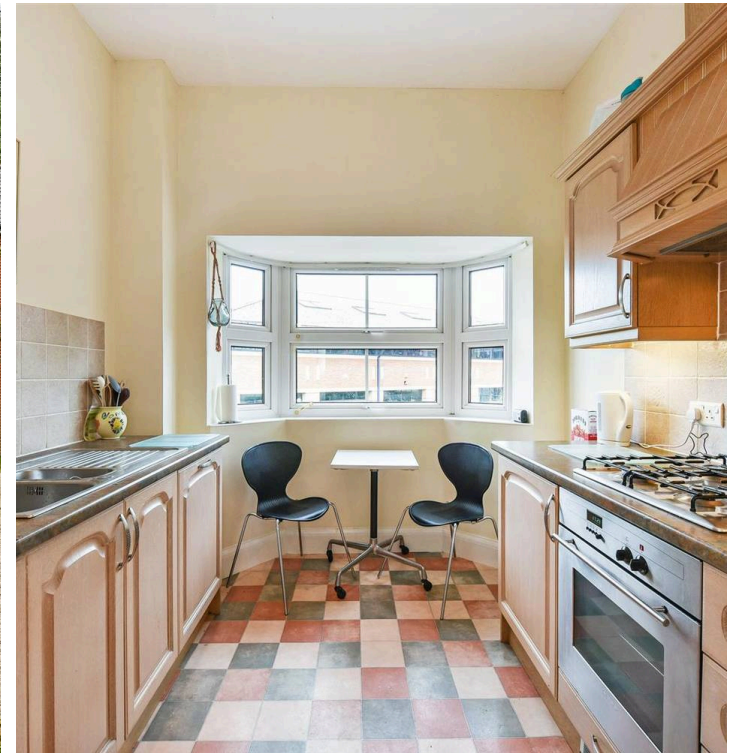
Council Tax band: C

Tenure: Leasehold

EPC Energy Efficiency Rating: B

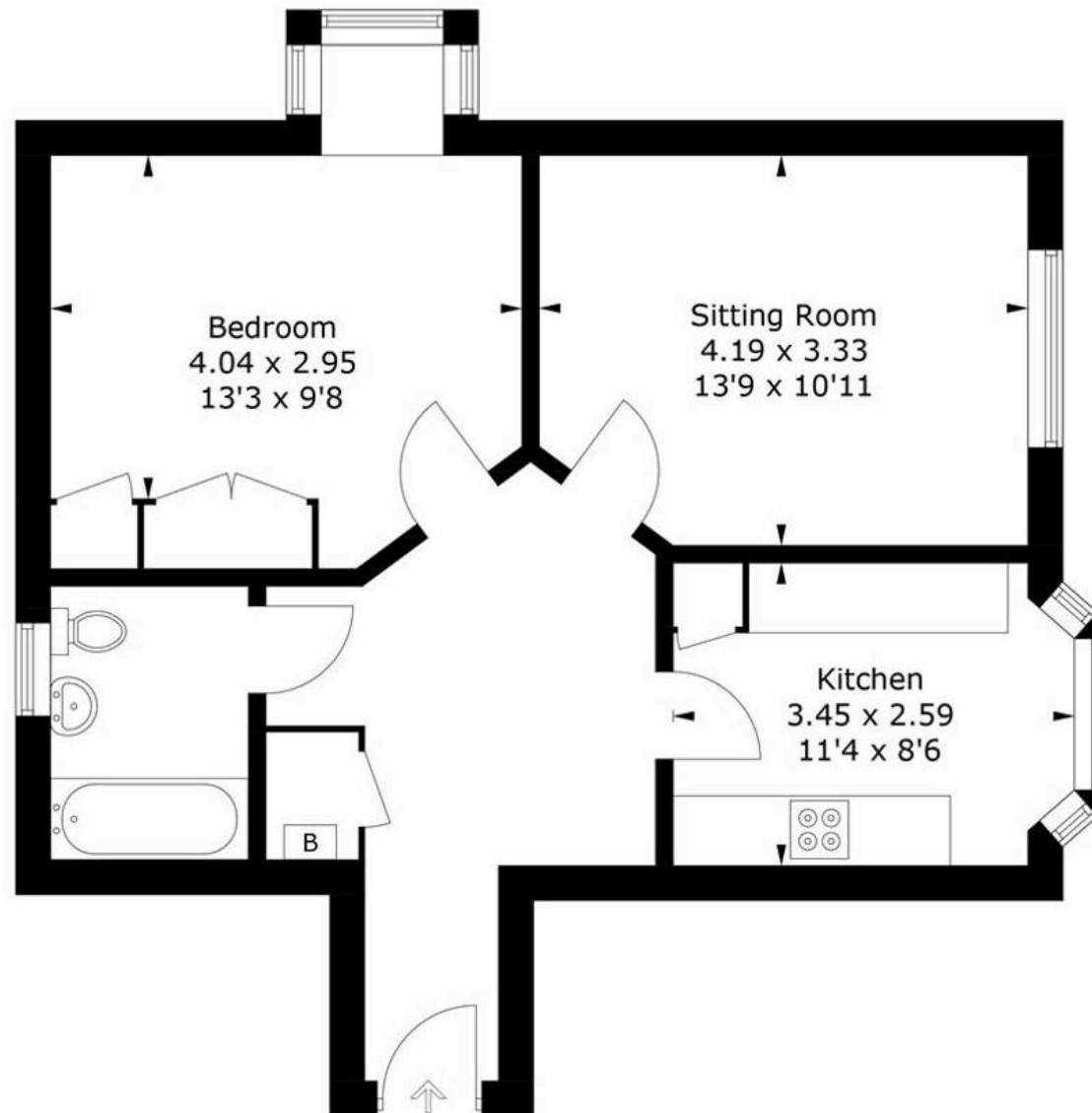
EPC Environmental Impact Rating: C

- Double aspect first floor apartment
- Allocated parking and bicycle store
- West of Chichester City Centre
- Communal grounds



Tannery Close, PO19

Approximate Gross Internal Area = 54.0 sq m / 581 sq ft



First Floor

PRODUCED BY CHARLES PECK

Whilst every attempt has been made to ensure the accuracy of the floorplan, measurements of doors, windows and rooms are approximate. These plans are for representation purposes only as defined by RICS Code of Measuring Practice and used as such by any prospective purchaser. (ID1120309)



Henry Adams - Chichester

Henry Adams LLP, Rowan House Baffins Lane - PO19 1UA

01243 533377

chichester@henryadams.co.uk

www.henryadams.co.uk/

Agents Note - Our particulars are for guidance only and are intended to give a fair overall summary of the property. They do not form part of any contract or offer, and should not be relied upon as a statement or representation of fact. Measurements, areas and distances are approximate only. Photographs may include lifestyle shots and pictures of local views. No undertaking is given as to the structural condition of the property, or any necessary consents or the operating ability or efficiency of any service, system or appliance. Please ask if you would like further information, especially before you travel to the property.