





## 6 Meadowside Walk, Tangmere

A well proportioned end of terrace home with and en-suite principal bedroom



- ▶ Bright and airy accommodation
- ▶ Dual aspect sitting room
- ▶ Three bedrooms (one en-suite)
- ▶ No onward chain
- ▶ Popular kitchen/dining room configuration
- ▶ Cloakroom
- ▶ Parking for two cars

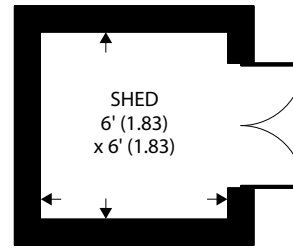
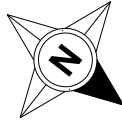
A well proportioned three bedroom end of terrace house situated in a popular village location about four miles east of Chichester.

The property offers light and airy accommodation including a sunny dual aspect sitting room and a kitchen/dining room with double glazed sliding patio doors to the rear garden. There is also a traditional entrance hall and cloakroom. Upstairs there are three bedrooms and a family bathroom. The principal bedroom has an en-suite shower room.

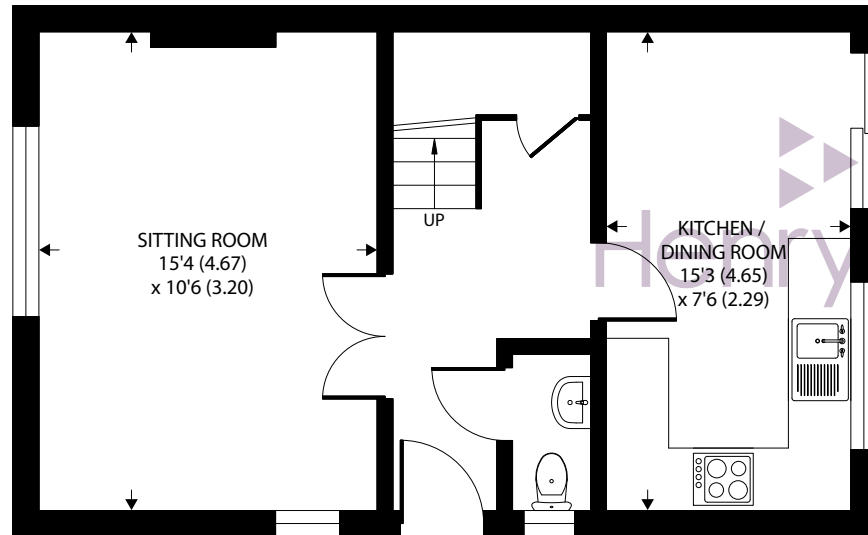
A pathway from the property leads to a parking area where the property has a double length parking space providing parking for two cars. The enclosed rear garden is mainly hard landscaped for ease of maintenance. A large triangle of open grassland adjacent to the property is available within the sale if desired by the purchaser.

Chichester District Council - 24/25 Tax Band £2,250.67

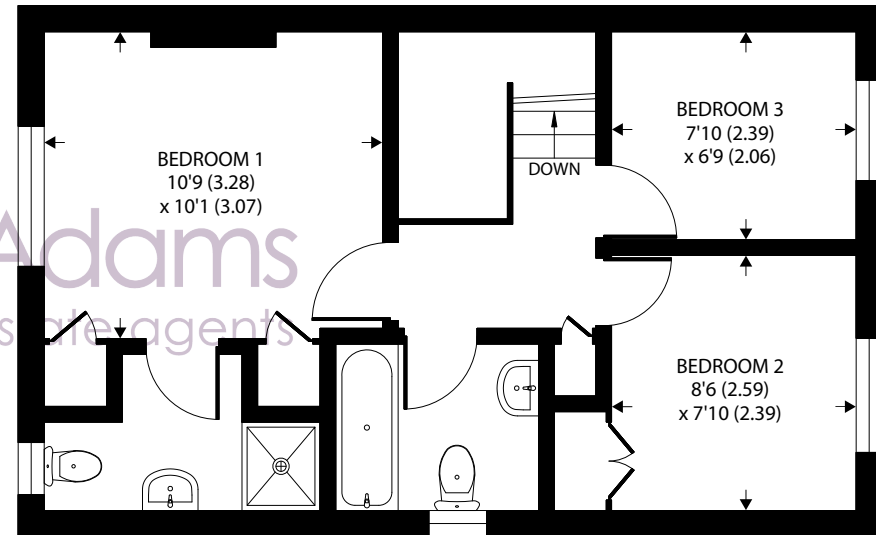




OUTBUILDING



GROUND FLOOR



FIRST FLOOR

Approximate Area = 798 sq ft / 74.1 sq m

Outbuilding = 36 sq ft / 3.3 sq m

Total = 834 sq ft / 77.4 sq m

For identification only - Not to scale



Agents Note - Our particulars are for guidance only and are intended to give a fair overall summary of the property. They do not form part of any contract or offer, and should not be relied upon as a statement or representation of fact. Measurements, areas and distances are approximate only. Photographs may include lifestyle shots and pictures of local views. No undertaking is given as to the structural condition of the property, or any necessary consents or the operating ability or efficiency of any service, system or appliance. Please ask if you would like further information, especially before you travel to the property.



## Location

Tangmere has a Co-op convenience store, village hall, medical centre, primary school and church. Three miles to the west lies the cathedral city of Chichester which offers excellent high street shopping, many fashionable restaurants, cafes and bars, the Festival Theatre and a mainline station to London Victoria. Nearby Goodwood is famous for its many event days including the world renowned Festival of Speed and Goodwood Revival for motor racing enthusiasts and a season of horse racing including the Qatar Goodwood Festival. There are superb sailing facilities around Chichester Harbour and water sports from the beaches at West Wittering. The area is a paradise for wildlife enthusiasts, with beautiful walks and cycle tracks over the South Downs and around the harbour.

## Directions

From Chichester proceed east on the A27. At the Tangmere/Boxgrove roundabout take the third exit into Meadow Way (signposted Tangmere). Meadowside is about half way down on the right.

[what3words.com/choppers.years.missions](https://what3words.com/choppers.years.missions)

