



Connells

Sandhill Way
Aylesbury



Property Description

**** NO UPPER CHAIN ****

Connells are pleased to bring this rarely available detached family home to the market that is situated within the ever-popular Fairford Leys development. The property is in great decorative order throughout and briefly comprises: - an entrance hall with tiled with under floor heating, two reception rooms, a modern fitted kitchen, four double bedrooms and a family bathroom suite. Benefits include a guest cloakroom, an additional conservatory room, an en-suite to the master bedroom, a landscaped 'L' shaped garden, privacy gates to the driveway that provides off road parking for many vehicles and leads to the double garage which has power and lighting.

An ideal family home, the property is conveniently located with access to several transport links including a frequent bus service providing a quick link to Aylesbury town centre and railway station. There are several nurseries, primary schools and secondary schools within catchments including St Marys. The village square offers a range of shops, restaurants, church, community centre and health club with Aylesbury town itself offers a comprehensive range of shopping and schooling facilities together with a mainline railway link to London (Marylebone) in approximately one hour.

Viewing is highly recommended.

For more information or to arrange a viewing, please contact Connells today.

Entrance

Storm porch over front door to

Entrance Hall

Window to side aspect, ceramic tiled floor with under floor heating, doors to all rooms, stairs rising to the first floor, under-stair storage.

Cloakroom

Window to side aspect, low level wc, pedestal wash hand basin, tiled splash back area, radiator.

Living Room

19' 5" MAX x 10' 9" MAX (5.92m MAX x 3.28m MAX)

Window to the side, dual windows to the front, television point, telephone point, radiator, bespoke sandstone fireplace with inset electric fire, radiator.

Kitchen

12' 8" MAX x 9' 8" MAX (3.86m MAX x 2.95m MAX)

Fitted kitchen comprised of range of storage units at base and eye level, rolled edge work surface areas, single drainer sink unit with mixer tap, tiled splash back areas, integrated oven and gas hob with extractor hood over, integrated dishwasher and fridge/freezer, window to the side, door to rear garden, tiled floor with under floor heating,

Dining Room

12' 9" x 9' 6" (3.89m x 2.90m)

Sliding door to conservatory, radiator.

Conservatory

9' 10" x 8' 11" (3.00m x 2.72m)

French style patio door to the rear, ceramic tiled floor.

First Floor Landing

Loft access, airing cupboard.

Bedroom One

12' 3" MAX x 9' 10" MAX (3.73m MAX x 3.00m MAX)

Window to the rear and side, radiator, built in wardrobe, telephone point, door to en-suite.

En-Suite

Window to side aspect, walk in shower cubicle, wash hand basin set in vanity unit, low level wc, radiator.

Bedroom Two

10' 7" MAX x 10' 1" MAX (3.23m MAX x 3.07m MAX)

Window to the front aspect, built in wardrobe, radiator.

Bedroom Three

10' 7" MAX x 9' 2" MAX (3.23m MAX x 2.79m MAX)

Windows to the front and side, radiator.

Bedroom Four

13' MAX x 7' MAX (3.96m MAX x 2.13m MAX)

Window to the rear aspect, radiator, telephone point.

Bathroom

Window to side aspect, white suite comprising panelled bath with shower over, wash hand basin and low level wc set in vanity unit, heated towel rail.

Outside

Garage

Privacy gates to driveway leading to double garage with twin up and over doors, power and lighting, eaves storage.

Front Garden

Laid to lawn with flower bed, trellis with trained roses, ornate railing.

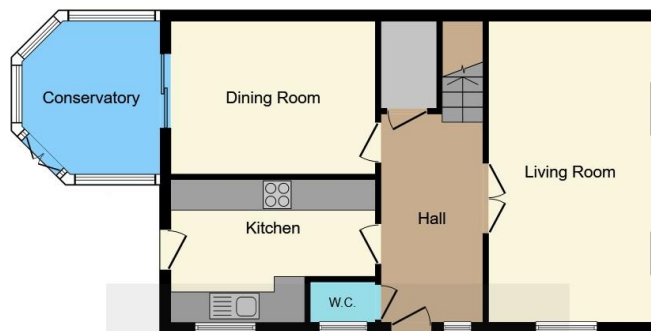
Rear Garden

A landscaped and private garden with large paved patio area, courtesy door to garage with a step rising to lawned area, well stocked borders edged by railway sleepers comprising of fruit trees, shrubs and flowers, enclosed by wall and timber panel fencing, additional raised patio area, outside cold water tap.

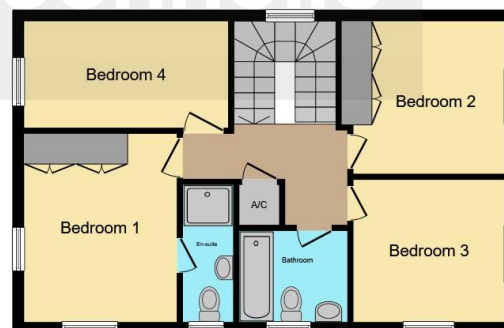








Ground Floor



First Floor

This floor plan is for illustrative purposes only. It is not drawn to scale. Any measurements, floor areas (including any total floor area), openings and orientation are approximate. No details are guaranteed, they cannot be relied upon for any purpose and they do not form part of any agreement. No liability is taken for any error, omission or misstatement. A party must rely upon its own inspection(s). Powered by www.focalagent.com

To view this property please contact Connells on

T 01296 395710
E fairfordleys@connells.co.uk

6 Hampden Square
 AYLESBURY HP19 7HT

EPC Rating: D Council Tax
 Band: F

Tenure: Freehold

view this property online connells.co.uk/Property/LEY304561



1. MONEY LAUNDERING REGULATIONS Intending purchasers will be asked to produce identification documentation at a later stage and we would ask for your co-operation in order that there will be no delay in agreeing the sale. 2. These particulars do not constitute part or all of an offer or contract. 3. The measurements indicated are supplied for guidance only and as such must be considered incorrect. Potential buyers are advised to recheck measurements before committing to any expense. 4. We have not tested any apparatus, equipment, fixtures, fittings or services and it is in the buyers interest to check the working condition of any appliances.

Connells Residential is registered in England and Wales under company number 1489613, Registered Office is Cumbria House, 16-20 Hockliffe Street, Leighton Buzzard, Bedfordshire, LU7 1GN. VAT Registration Number is 500 2481 05.

See all our properties at www.connells.co.uk | www.rightmove.co.uk | www.zoopla.co.uk

Property Ref: LEY304561 - 0006