



Connells

Alton Mews
Aylesbury



Property Description

Connells are delighted to bring to the market this spacious one bedroom third floor apartment, located in the new Alton mews development within close proximity to the Aylesbury town centre. The development boasts secure gated entrance with ample parking and less than two years old and benefits a 10 year NHBC warranty.

This modern one bedroom apartment, offers two storage cupboards within the entrance hall. A large open plan kitchen / living room with space for appliances such as dishwasher, washing machine and fridge and an integrated electric oven/ hob.

The bedroom has carpet underfoot with large windows boasting plenty of natural light. The spacious bathroom is part tiled with laminate flooring underfoot and a bath with a shower overhead.

There is allocated parking with visitor bays throughout.

Entrance Hall

Door to side, laminated flooring, times two storage cupboards.

Kitchen / Living Room

19' 2" MAX x 18' 6" MAX (5.84m MAX x 5.64m MAX)

Two windows to the front, laminated flooring, radiators (two), wall and base units, electric

hob and oven.. Space for a washing machine, fridge and dishwasher.

Bedroom One

11' 8" MAX x 11' 7" MAX (3.56m MAX x 3.53m MAX)

Window to the front, carpet and radiator.

Bathroom

WC, wash hand basin, partial tiling, towel rail bath/mixer, shower over bath

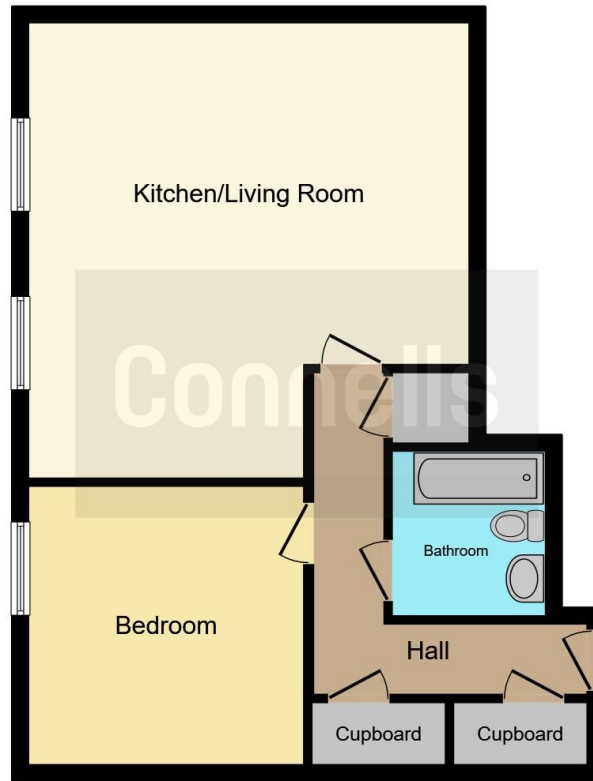
Parking

Allocated









This floor plan is for illustrative purposes only. It is not drawn to scale. Any measurements, floor areas (including any total floor area), openings and orientation are approximate. No details are guaranteed, they cannot be relied upon for any purpose and they do not form part of any agreement. No liability is taken for any error, omission or misstatement. A party must rely upon its own inspection(s). Powered by www.focalagent.com

To view this property please contact Connells on

T 01296 395710
E fairfordleys@connells.co.uk

6 Hampden Square
AYLESBURY HP19 7HT

EPC Rating: C

Tenure: Leasehold

view this property online connells.co.uk/Property/LEY304210

This is a Leasehold property with details as follows; Term of Lease 125 years from 21 Dec 2022. Should you require further information please contact the branch. Please Note additional fees could be incurred for items such as

1. MONEY LAUNDERING REGULATIONS Intending purchasers will be asked to produce identification documentation at a later stage and we would ask for your co-operation in order that there will be no delay in agreeing the sale. 2. These particulars do not constitute part or all of an offer or contract. 3. The measurements indicated are supplied for guidance only and as such must be considered incorrect. Potential buyers are advised to recheck measurements before committing to any expense. 4. We have not tested any apparatus, equipment, fixtures, fittings or services and it is in the buyers interest to check the working condition of any appliances.

Connells Residential is registered in England and Wales under company number 1489613, Registered Office is Cumbria House, 16-20 Hockliffe Street, Leighton Buzzard, Bedfordshire, LU7 1GN. VAT Registration Number is 500 2481 05.



See all our properties at www.connells.co.uk | www.rightmove.co.uk | www.zoopla.co.uk

Property Ref: LEY304210 - 0004