



HEAD OFFICE:
14 Cloughton Street
St Helens, WA10 1RS
TEL: 01744 24341
d.bamber@johnbrowns.co.uk
www.johnbrowns.co.uk



Wyreside, Preston, PR3 6TQ

The beautiful Sunseeker Sensation Lodge is situated on the most desirable pitch on park overlooking the beautiful green fields. It has everything you could possibly need including a private outdoor decking area, perfect for soaking up the stunning views. It has a spacious open-plan living area with patio doors leading straight onto the decking. Two generously sized bedrooms, including a master suite with en-suite bathroom. You also get access to a range of park amenities, including a Lounge bar, Snooker & darts room, nature trails, and more.

This lodge really is the perfect blend of elegance and comfort nestled within the serene surroundings of Rawcliffe Hall.

This comes with 2024 site fees, a long owners season, and an unlimited license (no age limit).

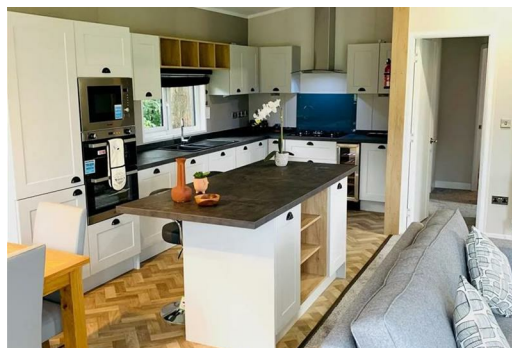
Now £172,995 reduced from £184,995.

Size: 40ft x 20ft 2-Bedroom

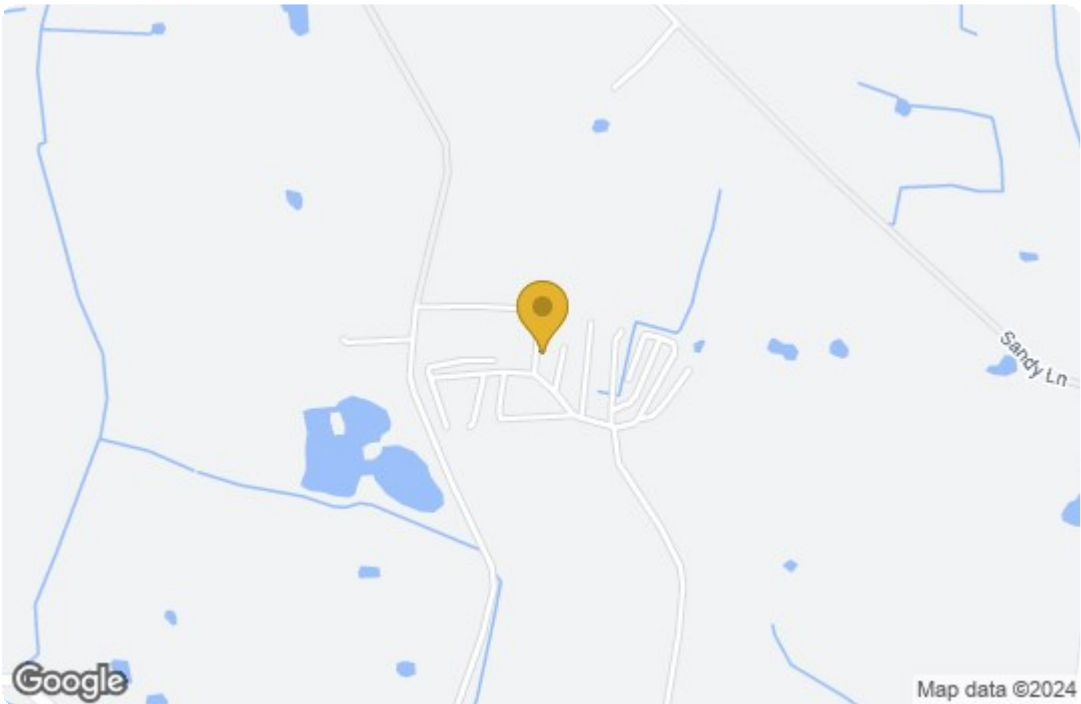
- 2023 Sunseeker Sensation Lodge
- Open Plan Living/Dining Area
- Two Bedrooms
- Full L-Shaped Wrap Around Decking
- Full En-Suite With Shower in the Master
- Countryside Views

£172,995

2023 Sunseeker Sensation Lodge, Rawcliffe Hall Wyreside, Preston, PR3 6TQ







Energy Efficiency Rating

	Current	Potential
Very energy efficient - lower running costs		
(92 plus) A		
(81-91) B		
(69-80) C		
(55-68) D		
(39-54) E		
(21-38) F		
(1-20) G		
Not energy efficient - higher running costs		

England & Wales EU Directive 2002/91/EC

Environmental Impact (CO₂) Rating

	Current	Potential
Very environmentally friendly - lower CO ₂ emissions		
(92 plus) A		
(81-91) B		
(69-80) C		
(55-68) D		
(39-54) E		
(21-38) F		
(1-20) G		
Not environmentally friendly - higher CO ₂ emissions		

England & Wales EU Directive 2002/91/EC