



2 Marbury Close

Urmston, Manchester, M41 8GZ

Offers In The Region Of £230,000



2



1

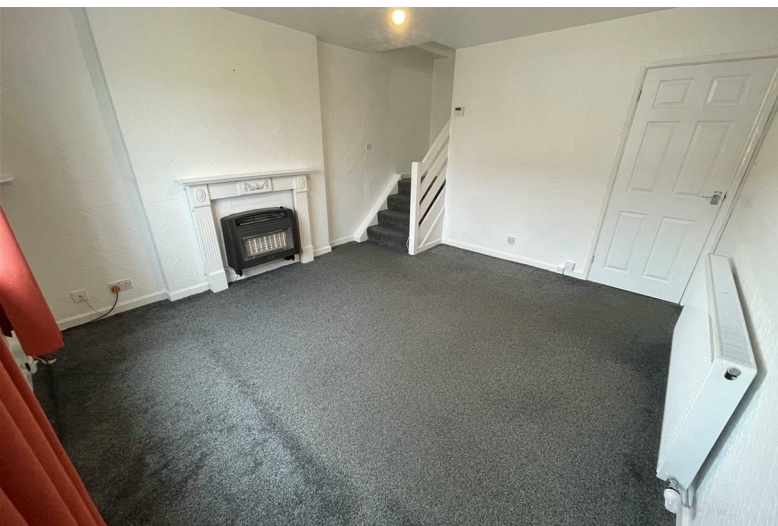


1



D

2 Marbury Close



Description

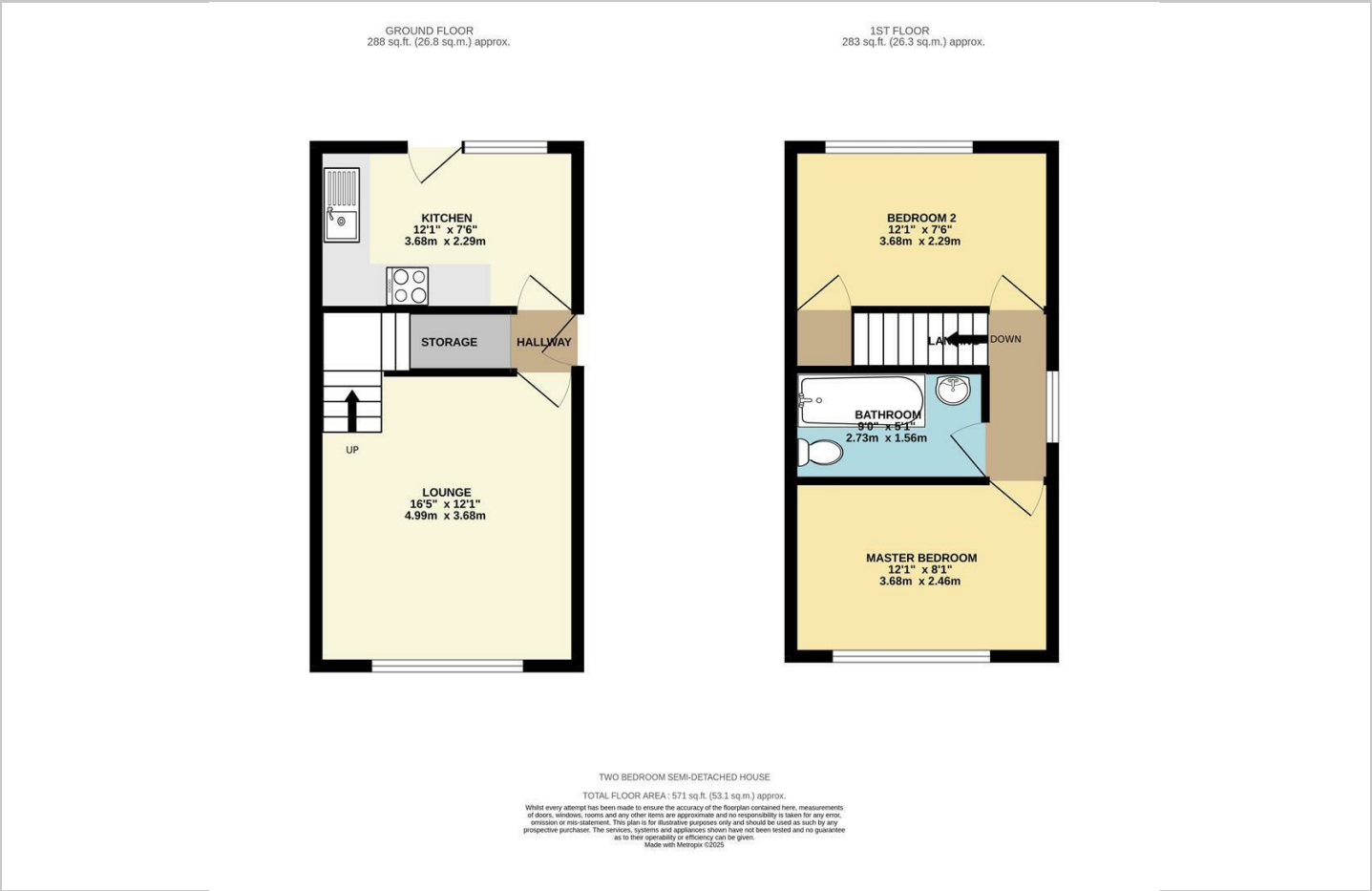
NO CHAIN Park Lane Estate Agents are pleased to offer For Sale this two-bedroom semi-detached house on Marbury Close, a quiet cul-de-sac in Flixton. Perfectly positioned for access to a wealth of amenities, including schools, shops, restaurants, transport links and playing parks, this property is ideal for young families and first-time buyers. The property is uPVC double-glazed throughout and warmed by gas central heating. Internal accommodation comprises an entrance hallway, lounge, kitchen, stairs to the first-floor landing, master bedroom, second bedroom and family bathroom. Externally, the property boasts an easy-to-maintain corner plot, which is mostly lawned and a sizeable rear garden with a combination of lawn and patio. Contact us now to arrange your viewing!

- NO CHAIN
- CORNER PLOT WITH SIZEABLE REAR GARDEN
- UPVC DOUBLE GLAZED & GAS CENTRAL HEATING
- IDEALLY LOCATED FOR ACCESS TO A WEALTH OF AMENITIES
- TWO BEDROOM SEMI-DETACHED
- CONTACT US NOW TO ARRANGE YOUR VIEWING





Floor Plan



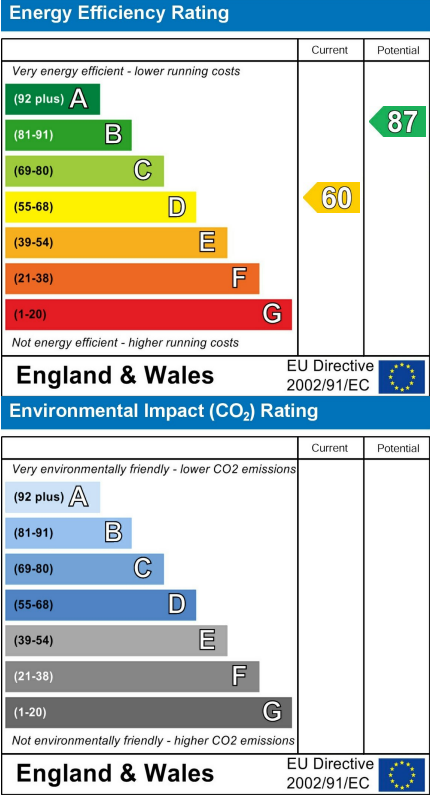
Area Map



Viewing

Please contact our Urmston Office on 0161 747 2414 if you wish to arrange a viewing appointment for this property or require further information.

Energy Efficiency Graph



These particulars, whilst believed to be accurate are set out as a general outline only for guidance and do not constitute any part of an offer or contract. Intending purchasers should not rely on them as statements of representation of fact, but must satisfy themselves by inspection or otherwise as to their accuracy. No person in this firms employment has the authority to make or give any representation or warranty in respect of the property.