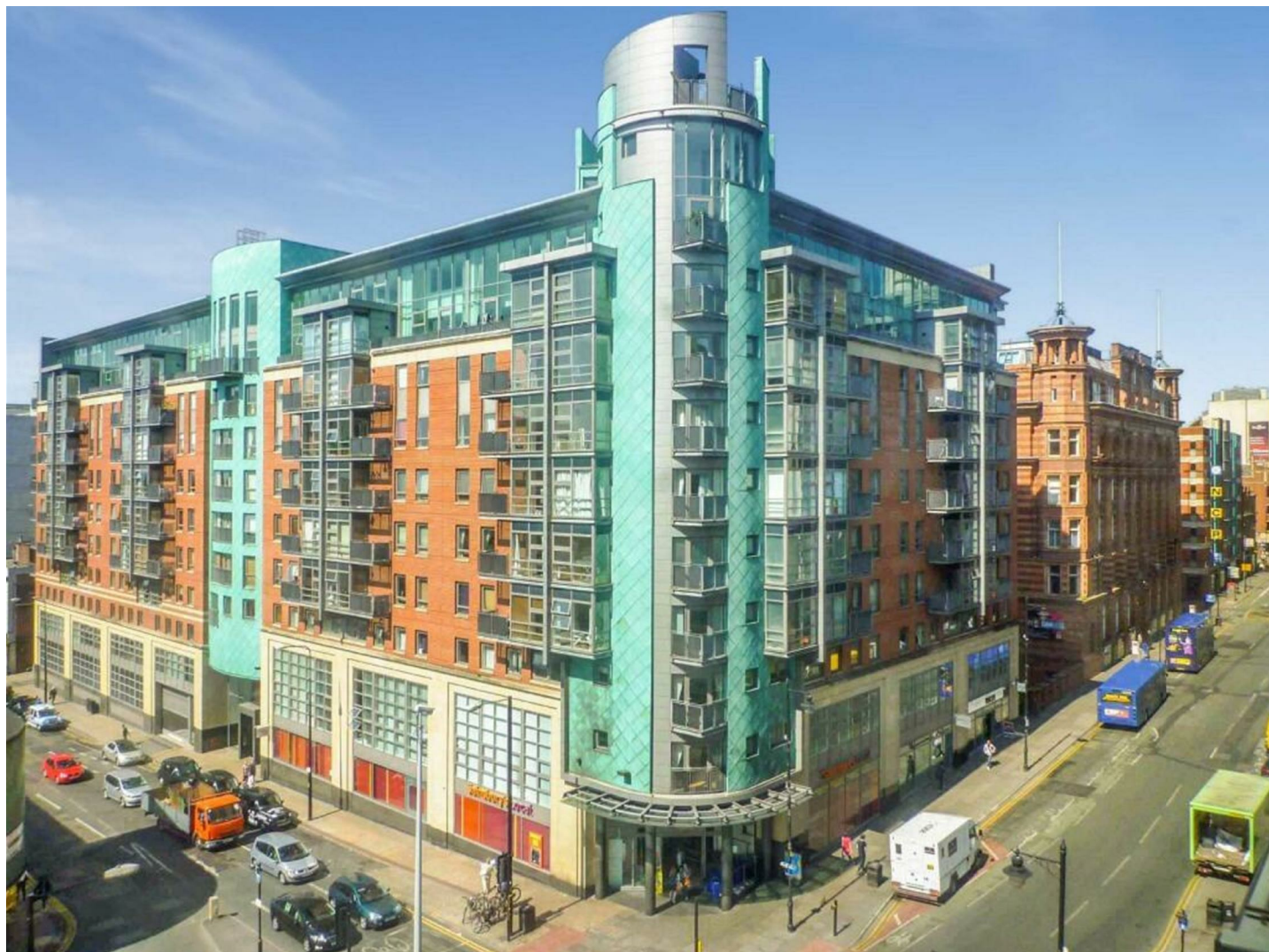


# Park Lane

Your Local Estate Agent

Residential & Commercial Property



## 51 Whitworth Street West , Manchester, M1 5ED

**\*AVAILABLE NOW\*** **\*PARKING SPACE\*** Park Lane Lettings are proud to offer To Let this three double-bedroom apartment, located within the highly sought-after W3 Building on Whitworth Street West. Positioned on the top floor, this property offers serene views of the canal below. The apartment is perfectly located for access to popular Manchester locations including the Palace Theatre, Manchester Central Library, Sackville Gardens and a wide range of amenities and transport links including Oxford Road Train Station. The internal accommodation comprises in summary; entrance hallway, kitchen/lounge, master bedroom, second bedroom, third bedroom, first bathroom and second bathroom. The apartment boasts a secure underground allocated parking space and has a 24-hour concierge on-site. Contact us now to arrange your viewing!

**£2,200 Per Calendar Month**

# 51 Whitworth Street West

, Manchester, M1 5ED



- ALLOCATED PARKING SPACE
- AVAILABLE NOW
- SERENE VIEWS OF MANCHESTER CANAL
- CLOSE TO OXFORD ROAD TRAIN STATION AND PALACE THEATRE
- SHOPS, POPULAR RESTAURANTS AND BARS NEARBY
- 24-HOUR CONCIERGE
- THREE DOUBLE BEDROOMS AND TWO BATHROOMS
- CONTACT US NOW TO ARRANGE YOUR VIEWING



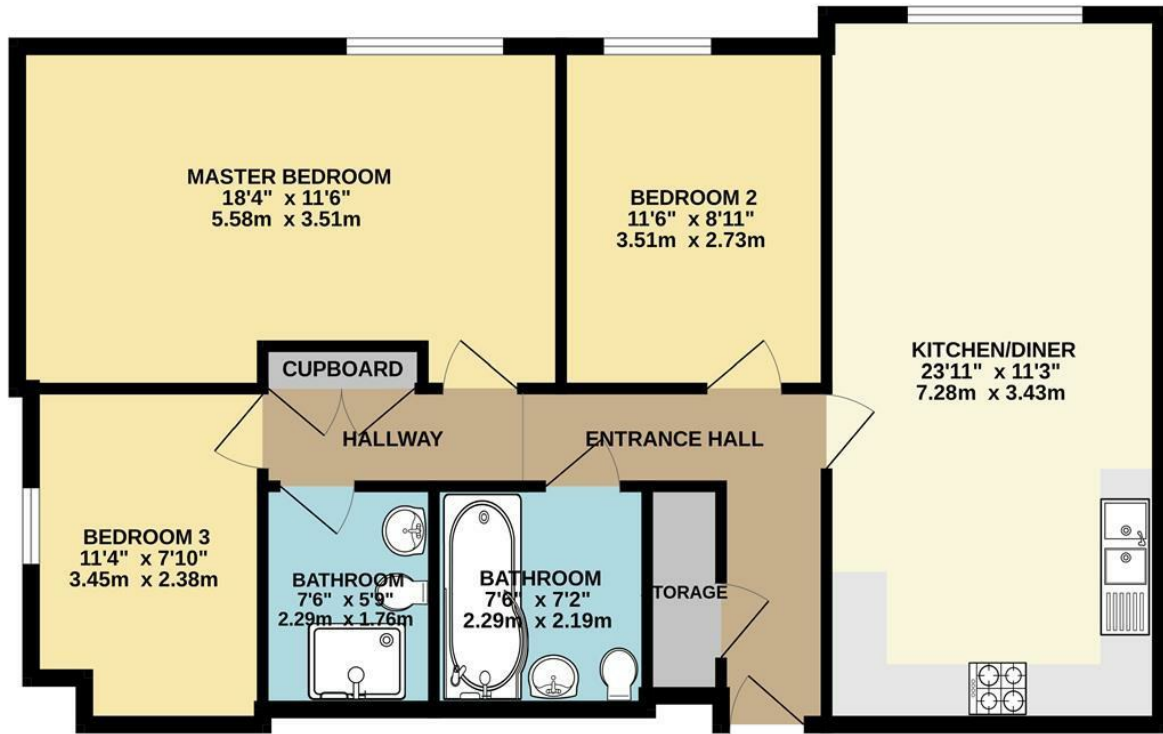
[Directions](#)





# Floor Plan

GROUND FLOOR  
874 sq.ft. (81.2 sq.m.) approx.



THREE BEDROOM APARTMENT

TOTAL FLOOR AREA : 874 sq.ft. (81.2 sq.m.) approx.

Whilst every attempt has been made to ensure the accuracy of the floorplan contained here, measurements of doors, windows, rooms and any other items are approximate and no responsibility is taken for any error, omission or mis-statement. This plan is for illustrative purposes only and should be used as such by any prospective purchaser. The services, systems and appliances shown have not been tested and no guarantee as to their operability or efficiency can be given.  
Made with Metropix ©2024

These particulars, whilst believed to be accurate are set out as a general outline only for guidance and do not constitute any part of an offer or contract. Intending purchasers should not rely on them as statements of representation of fact, but must satisfy themselves by inspection or otherwise as to their accuracy. No person in this firm's employment has the authority to make or give any representation or warranty in respect of the property.

