

# Park Lane

Your Local Estate Agent

Residential & Commercial Property



26 Bradfield Close

, Stockport, SK5 6XP

Offers In The Region Of £219,999



3



1



1



C



# 26 Bradfield Close



## Description

\*NO CHAIN\* Park Lane Estate Agents are proud to offer For Sale this beautifully presented and much loved three-bedroom semi-detached property on Bradfield Close, a popular residential street. Boasting access to a wealth of amenities including schools, shops, restaurants, bars and transport links, this house is ideal for first-time buyers or growing families. The property is uPVC double-glazed throughout and warmed by gas central heating. The internal accommodation comprises in summary; lounge, kitchen, stairs to the first-floor landing, master bedroom, second bedroom, third bedroom and family bathroom. Externally to the front, the property boasts an easy-to-maintain front garden which is lawned with mature borders and off-road parking. To the rear is a sizeable garden which is mostly lawned with mature borders. Contact us now to arrange your viewing!

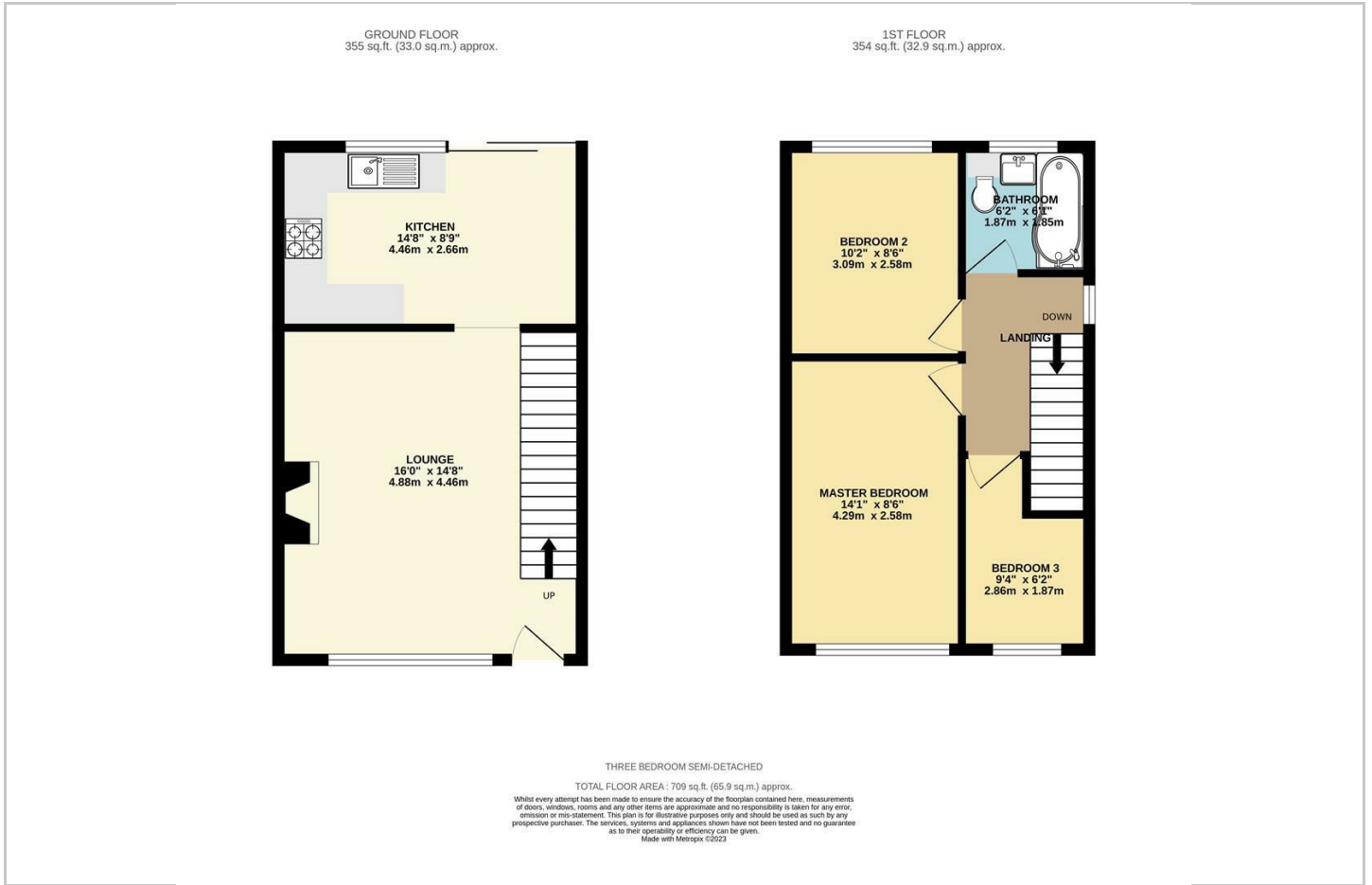
- NO CHAIN
- DOUBLE GLAZED THROUGHOUT & GAS CENTRAL HEATING
- MOVE IN CONDITION
- OFF ROAD PARKING
- CLOSE TO LOCAL AMENITIES AND TRANSPORT LINKS
- CONTACT US NOW TO ARRANGE YOUR VIEWING



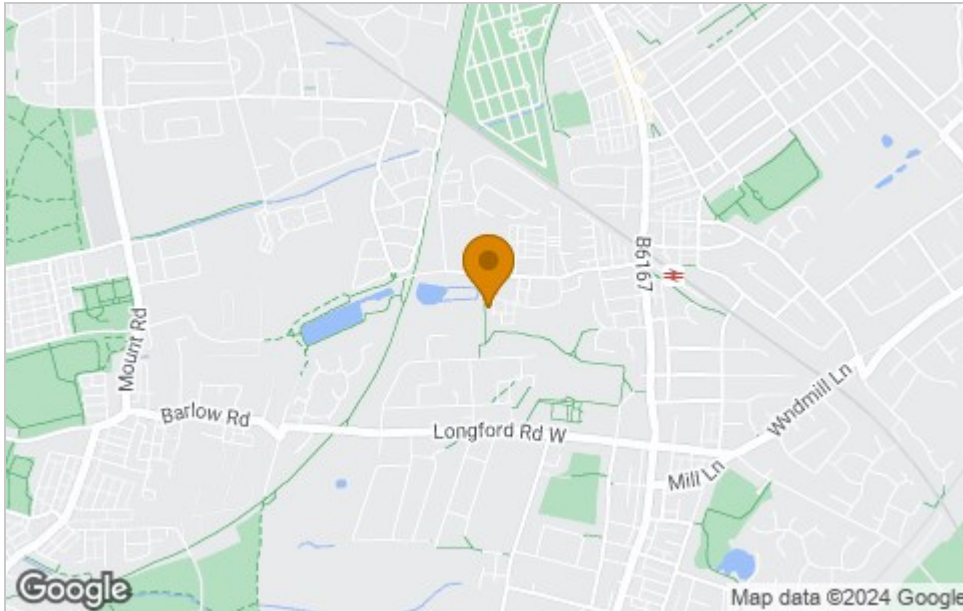




# Floor Plan



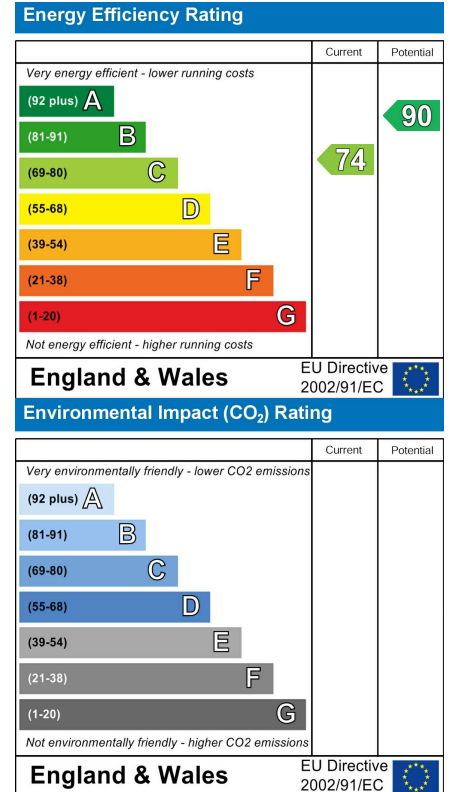
# Area Map



# Viewing

Please contact our Urmston Office on 0161 747 2414 if you wish to arrange a viewing appointment for this property or require further information.

# Energy Efficiency Graph



These particulars, whilst believed to be accurate are set out as a general outline only for guidance and do not constitute any part of an offer or contract. Intending purchasers should not rely on them as statements of representation of fact, but must satisfy themselves by inspection or otherwise as to their accuracy. No person in this firm's employment has the authority to make or give any representation or warranty in respect of the property.