



66 Hadfield Close , Manchester, M14 5LY

NO CHAIN* *IDEAL INVESTMENT OPPORTUNITY Park Lane Estate Agents are delighted to offer For Sale this well-presented two-bedroom apartment, on the ground floor of the popular Hadfield Close development. The apartment is perfectly positioned for access to a wealth of amenities including Manchester Royal Infirmary, Birchfields Park, schools, shops, restaurants, bars and transport links. The apartment is double-glazed throughout. In summary, the internal accommodation comprises; an entrance hallway, master bedroom, second bedroom, storage cupboard, family bathroom and kitchen diner. Externally, the property boasts an allocated car parking space. Contact us now to arrange your viewing!

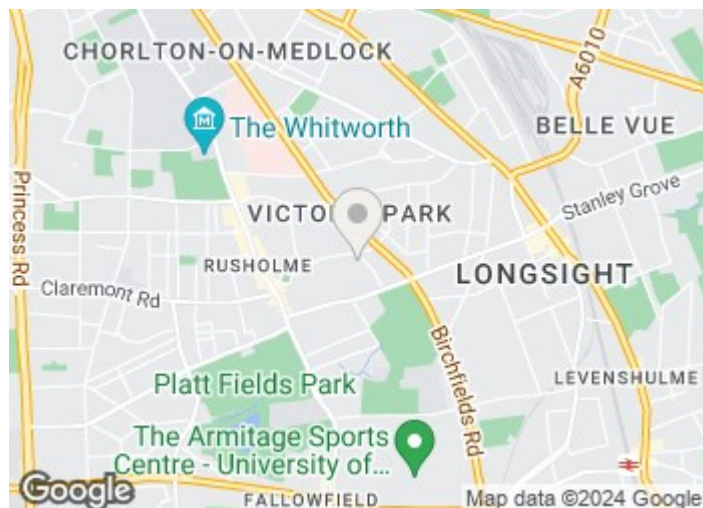
Offers In The Region Of £175,000

66 Hadfield Close

, Manchester, M14 5LY



- NO CHAIN
- EASY ACCESS TO MANCHESTER ROYAL INFIRMARY
- DOUBLE GLAZED THROUGHOUT
- ALLOCATED PARKING SPACE
- INVESTMENT OPPORTUNITY
- CONTACT US NOW TO ARRANGE YOUR VIEWING
- IDEAL FOR STUDENTS AND PROFESSIONALS
- GROUND FLOOR APARTMENT

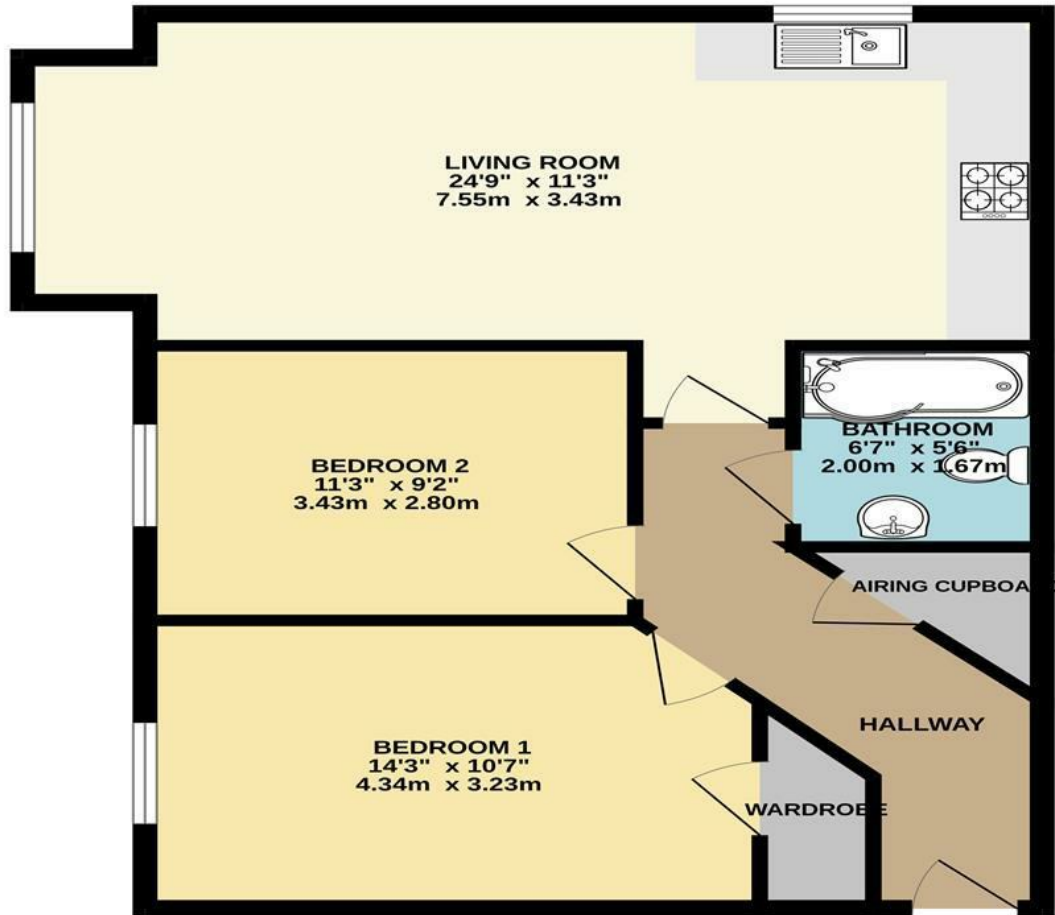


[Directions](#)



Floor Plan

GROUND FLOOR
669 sq.ft. (62.2 sq.m.) approx.



TWO BEDROOM GROUND FLOOR APARTMENT

TOTAL FLOOR AREA : 669 sq.ft. (62.2 sq.m.) approx.

Whilst every attempt has been made to ensure the accuracy of the floorplan contained here, measurements of doors, windows, rooms and any other items are approximate and no responsibility is taken for any error, omission or mis-statement. This plan is for illustrative purposes only and should be used as such by any prospective purchaser. The services, systems and appliances shown have not been tested and no guarantee as to their operability or efficiency can be given.
Made with Metropix ©2023

These particulars, whilst believed to be accurate are set out as a general outline only for guidance and do not constitute any part of an offer or contract. Intending purchasers should not rely on them as statements of representation of fact, but must satisfy themselves by inspection or otherwise as to their accuracy. No person in this firm's employment has the authority to make or give any representation or warranty in respect of the property.

