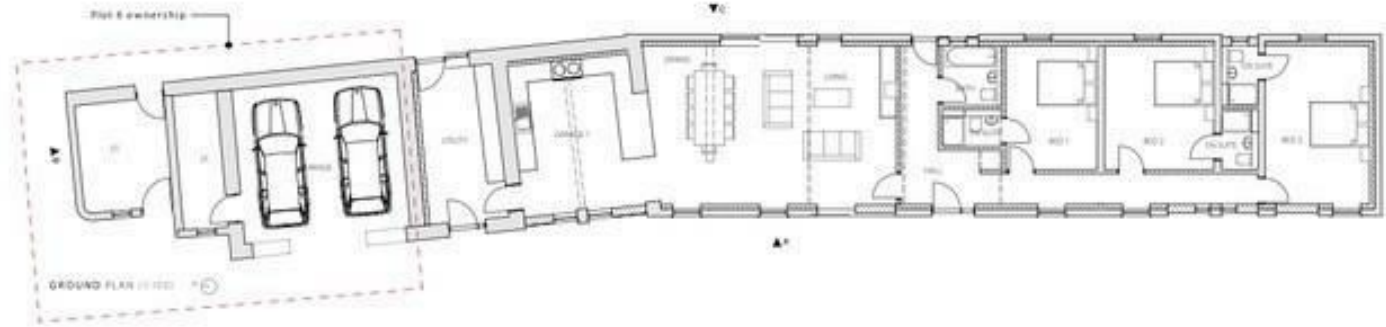




Plot 1, Chestnut Lodge, Conyers Fold,  
Driffield, Harpham, YO25 4QS  
£595,000



**AGENTS NOTES**

For clarification, we wish to inform prospective purchasers that we have not carried out a detailed Survey, nor tested the services, appliances and specific fittings for this property.

**VIEWING**

By appointment with the Agent.

**OPENING HOURS**

9 am to 5.30 pm Monday to Friday and 9 am to 3 pm Saturday

**PROPERTY VALUATION/SURVEY**

Should you be purchasing a property through another Agent, we offer a full range of Survey reports including Homebuyer Reports, all offered at competitive prices with money saving initiatives. For further impartial advice ring 01759 304625 or e-mail surveys@clubleys.com

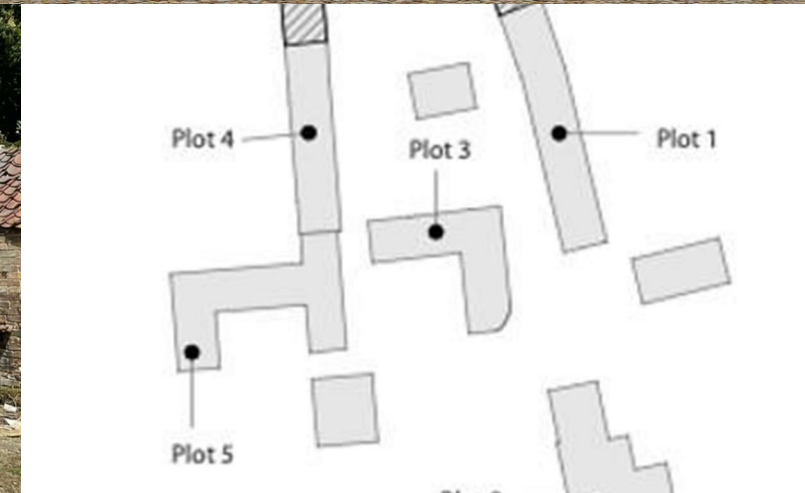
**FREE VALUATIONS FOR SALE**

If you are considering selling or letting your property, we offer a free, no obligation valuation service and would be pleased to discuss your individual requirements with you. Please ring 01430 874000 for further information or to arrange for one of our Valuers to call.

**MORTGAGES**

We are keen to stress the importance of seeking professional Mortgage advice and would recommend that an appointment be made to see Faye Rowland (Holmefield Financial Solutions), Mortgage and Protection Advisor by phoning her on 07540 536891 or e-mail Faye@holmefieldsolutions.co.uk or by contacting any member of staff. A broker fee of £199 will be charged on application. Your home may be repossessed if you do not keep up repayments on your mortgage. Holmefield Financial Solutions is an appointed representative of First Complete Ltd., which is authorised and regulated by the Financial Conduct Authority.

Please note that this floor plan is not to scale and is only intended as a guide to layout. All measurements provided are approximate and for guidance purposes only. If there is any point which is of a particular importance to you, please contact the office and we will be pleased to check the information, particularly if you contemplate travelling some distance to view the property.



60 - 64 Market Place, Market Weighton, York  
YO43 3AL  
01430 874000  
mw@clubleys.com  
www.clubleys.com

Energy Efficiency Rating		Current	Potential
Very energy efficient - lower running costs			
(92 plus)	A		
(81-91)	B		
(69-80)	C		
(55-68)	D		
(39-54)	E		
(21-38)	F		
(1-20)	G		
Not energy efficient - higher running costs			
England & Wales		EU Directive	2002/91/EC

Clubleys give notice that these particulars whilst believed to be accurate are set out as a general outline only for guidance and do not constitute any part of an offer or contract. Intending purchasers or tenants should not rely on them as statements or representation of fact, but must satisfy themselves by inspection or otherwise as to their accuracy. No person in the employment of Clubleys has the authority to make or give any representation or warranty in relation to the property.

Photograph disclaimer – In order to capture the features of a particular room we will mostly use wide angle lens photography. This will sometimes distort the image slightly and also has the potential to make a room look larger. Please, therefore, refer also to the room measurements detailed within this Brochure.

A stunning single storey barn conversion featuring high ceilings and a beautiful day room/kitchen with original kingpost trusses and beams this gorgeous single storey barn conversion will provide a superb luxury family home.

With 3 bedrooms and 2 ensuite bathrooms the barn conversion retains many existing features along with a high specification and underfloor heating throughout

Large gardens to the rear offer a tranquil and private setting. Tenure: Freehold. Council tax band: To be confirmed.

Tenure: Freehold. Council tax band: To be confirmed.



www.clubleys.com





**LOCATION**

The site is located near to the church, in the centre of the attractive village setting of Harpham, which is approximately six miles northeast of the market town of Driffield, offering a selection of retail, recreation, and leisure facilities. Harpham is also only 7.5 miles southwest of Bridlington, with a great connection to York, via the A614.

**LOCAL SCHOOLS**

Harpham is located within the catchment area for Burton Agnes C of E Primary School and Kilham C of E Primary School which are both rated Good by Ofsted. Driffield School and Sixth Form is also the local secondary school, rated Good by Ofsted.

There is also a selection of well-regarded private schools within commutable distance of the development.

**METHOD OF SALE**

The property is offered For Sale by Private Treaty.

**ADDITIONAL INFORMATION**

**SERVICES**

Mains water, electricity and drainage.

