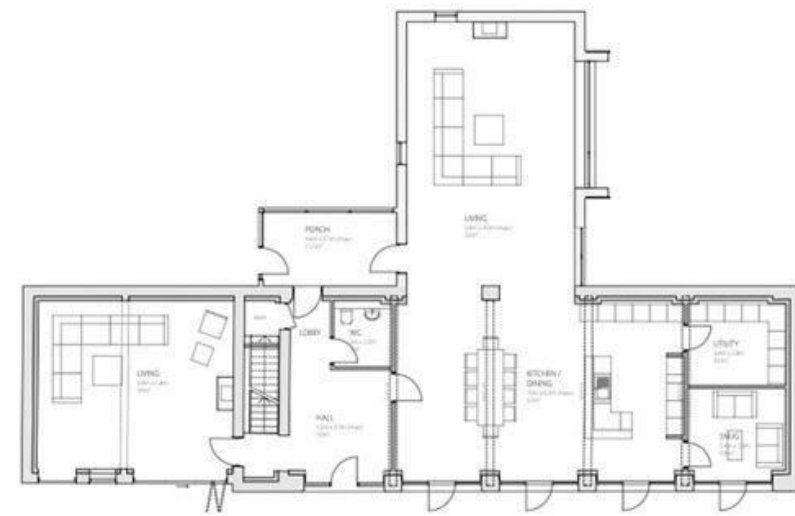




Plot 2, Kingsbarn, Conyers Fold,
Drifffield, Harpham, YO25 4QS
£975,000



GROUND FLOOR PLAN (1:100)



FIRST FLOOR PLAN (1:100)



AGENTS NOTES

For clarification, we wish to inform prospective purchasers that we have not carried out a detailed Survey, nor tested the services, appliances and specific fittings for this property.

VIEWING

By appointment with the Agent.

OPENING HOURS

9 am to 5.30 pm Monday to Friday and 9 am to 3 pm Saturday

PROPERTY VALUATION/SURVEY

Should you be purchasing a property through another Agent, we offer a full range of Survey reports including Homebuyer Reports, all offered at competitive prices with money saving initiatives. For further impartial advice ring 01759 304625 or e-mail surveys@clubleys.com

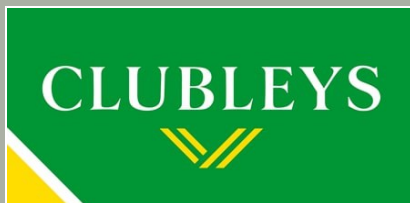
FREE VALUATIONS FOR SALE

If you are considering selling or letting your property, we offer a free, no obligation valuation service and would be pleased to discuss your individual requirements with you. Please ring 01430 874000 for further information or to arrange for one of our Valuers to call.

MORTGAGES

We are keen to stress the importance of seeking professional Mortgage advice and would recommend that an appointment be made to see Faye Rowland (Holmefield Financial Solutions), Mortgage and Protection Advisor by phoning her on 07540 536891 or e-mail Faye@holmefieldsolutions.co.uk or by contacting any member of staff. A broker fee of £199 will be charged on application. Your home may be repossessed if you do not keep up repayments on your mortgage. Holmefield Financial Solutions is an appointed representative of First Complete Ltd., which is authorised and regulated by the Financial Conduct Authority.

Please note that this floor plan is not to scale and is only intended as a guide to layout. All measurements provided are approximate and for guidance purposes only. If there is any point which is of a particular importance to you, please contact the office and we will be pleased to check the information, particularly if you contemplate travelling some distance to view the property.



60 - 64 Market Place, Market Weighon, York
YO43 3AL
01430 874000
mw@clubleys.com
www.clubleys.com

Energy Efficiency Rating		Current	Potential
Very energy efficient - lower running costs			
(92 plus) A			
(81-91) B			
(69-80) C			
(55-68) D			
(39-54) E			
(21-38) F			
(1-20) G			
Not energy efficient - higher running costs			
England & Wales		EU Directive	
		2002/91/EC	

Clubleys give notice that these particulars whilst believed to be accurate are set out as a general outline only for guidance and do not constitute any part of an offer or contract. Intending purchasers or tenants should not rely on them as statements or representation of fact, but must satisfy themselves by inspection or otherwise as to their accuracy. No person in the employment of Clubleys has the authority to make or give any representation or warranty in relation to the property.

Photograph disclaimer – In order to capture the features of a particular room we will mostly use wide angle lens photography. This will sometimes distort the image slightly and also has the potential to make a room look larger. Please, therefore, refer also to the room measurements detailed within this Brochure.

Featuring beautiful original kingpost trusses and beams throughout this stunning developed barn conversion creates an amazing 5 bedroom dream home. With unobstructed open field views large gardens and the option to purchase an additional 3 acre paddock this exciting opportunity is rarely available. The barn has a beautiful vaulted ceiling accessed from the kitchen/dayroom. A truly unique opportunity. Tenure: Freehold. Council tax band: To be confirmed.



www.clubleys.com



LOCATION

The site is located near to the church, in the centre of the attractive village setting of Harpham, which is approximately six miles northeast of the market town of Driffield, offering a selection of retail, recreation, and leisure facilities. Harpham is also only 7.5 miles southwest of Bridlington, with a great connection to York, via the A614.

LOCAL SCHOOLS

Harpham is located within the catchment area for Burton Agnes C of E Primary School and Kilham C of E Primary School which are both rated Good by Ofsted. Driffield School and Sixth Form is also the local secondary school, rated Good by Ofsted.

There is also a selection of well-regarded private schools within commutable distance of the development.

METHOD OF SALE

The property is offered For Sale by Private Treaty.

ADDITIONAL INFORMATION

SERVICES

Mains water, electricity and drainage.

