



Queen Elizabeth Street, SE1

£925 Per week

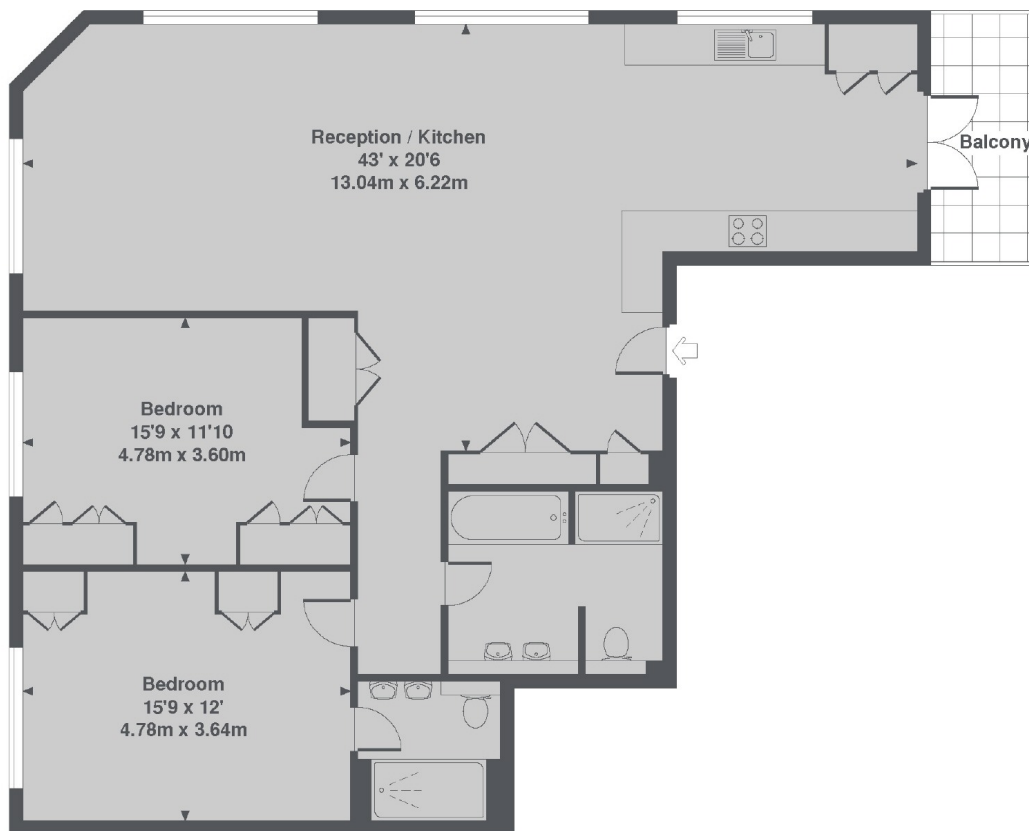
A two double bedroom, two bathroom apartment set within this warehouse conversion originally built in 1904. The property has period features and character from the original building, such as large windows and high ceilings.

Shad Thames is trendy and those who know it, love it. You can walk into the city, over Tower Bridge or get the underground from London Bridge or Bermondsey.

Features

- Two Double Bedrooms
- Two Bathrooms
- Balcony
- Furnished or Unfurnished
- 1240 Square Feet
- Shad Thames

Queen Elizabeth Street, London, SE1



Queen Charlotte Street, SE1
Total Approx. Floor area 1240 Sq. Ft. (115.2 Sq. M.)