



Mill Street, SE1

£484 Per week

A one double bedroom apartment in a popular warehouse conversion in the heart of Shad Thames. New Concordia Wharf benefits from a resident's swimming pool and a porter.

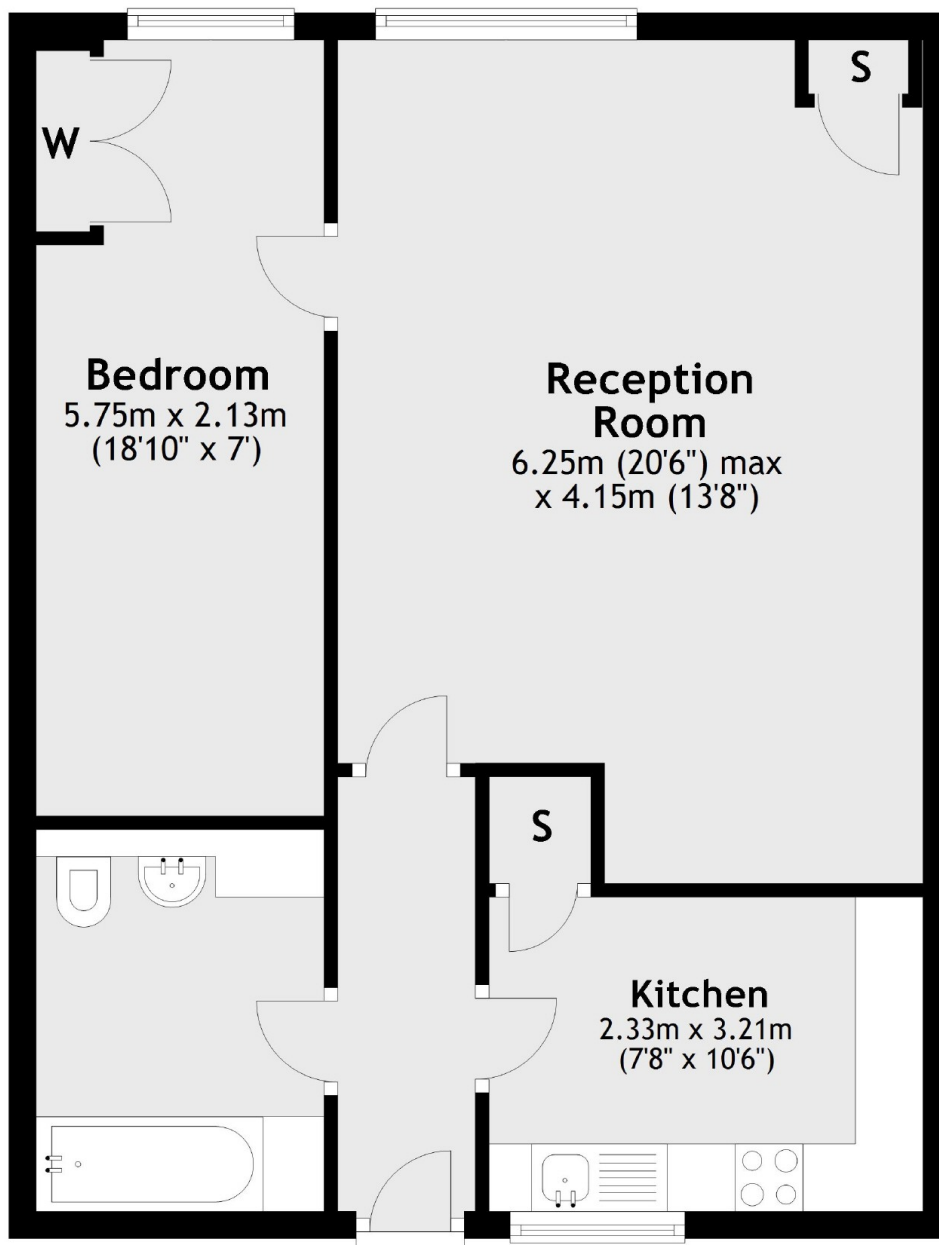
New Concordia Wharf is located on Mill Street close to the riverside walk ways of the Thames and the vast selection of shops and restaurants of vibrant Shad Thames.

Features

- One Double Bedroom
- Separate Kitchen
- Warehouse Conversion
- Exposed Brick
- Furnished
- Shad Thames

Mill Street,
London, SE1

Third Floor



Total area: approx. 57.0 sq. metres (613.1 sq. feet)