



## Boss Street, SE1

£923 Per week

A two double bedroom, two bathroom flat with a bright and spacious open plan kitchen/reception room in the heart of Shad Thames. Boss House is a sought after development with a 24-hour concierge.

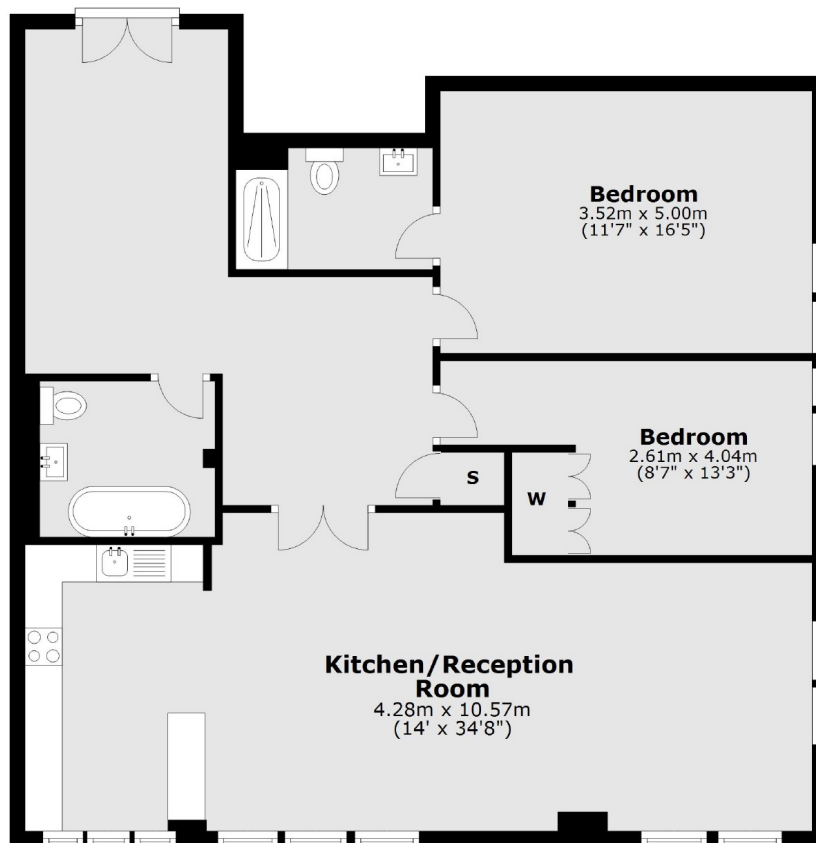
Shad Thames is a unique area steeped in history and character, located right next to Tower Bridge. The area offers a plethora of restaurants, cafes, coffee shops and pubs and is a short walk from attractions like Bermondsey Street, Borough Market and the Shard.

### Features

- Two Double Bedrooms
- Two Bathrooms
- Private Parking
- Triple Glazing
- High Ceilings
- Concierge

**Boss Street,  
London, SE1**

**Second Floor**



Total area: approx. 105.2 sq. metres (1132.5 sq. feet)