



Sun Passage, SE16

£460 Per week

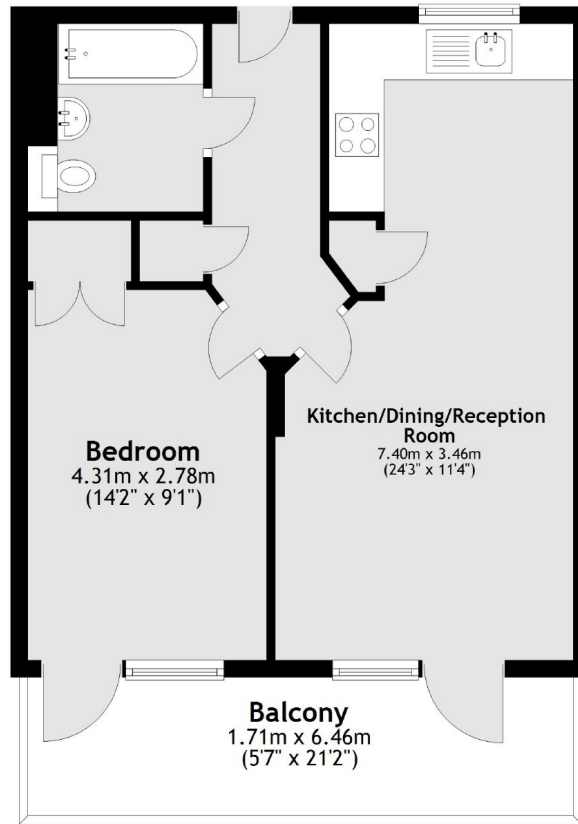
Situated moments from Bermondsey station, this one double bedroom flat is in fantastic condition and has a large open plan kitchen living space, private balcony, ample storage and lots of natural light.

Prospect House is less than 0.2 miles from the Jubilee Line which gives easy access to the city and Canary Wharf. Maltby Street Market is close by, as is Shad Thames and Bermondsey Street.

Features

- One Bedroom
- One Bathroom
- Balcony
- Private Parking
- Bermondsey
- Furnished

Sun Passage, London, SE16



Main area: Approx. 46.9 sq. metres (505.3 sq. feet)
Plus balconies, approx. 10.8 sq. metres (116.6 sq. feet)

Dexters

Tower Bridge
50 Shad Thames
London
SE1 2LY
Lettings
0207 650 5105

Energy Rating: B. We aim to make our particulars both accurate and reliable. However they are not guaranteed; nor do they form part of an offer or contract. If you require clarification on any points then please contact us, especially if you're traveling some distance to view. Please note that appliances and heating systems have not been tested and therefore no warranties can be given as to their good working order.

 **RICS** | Regulated
Estate Agent
and Letting Agent

[dexters.co.uk](https://www.dexters.co.uk)