



## Wolseley Street, SE1

**£438** Per week

A one bedroom flat situated moments from vibrant Shad Thames. The property has a spacious reception room with a separate kitchen and a generous double bedroom.

Peter Butler House is located close to Shad Thames and all local bars and restaurants and only 0.4 Miles from Bermondsey tube station.

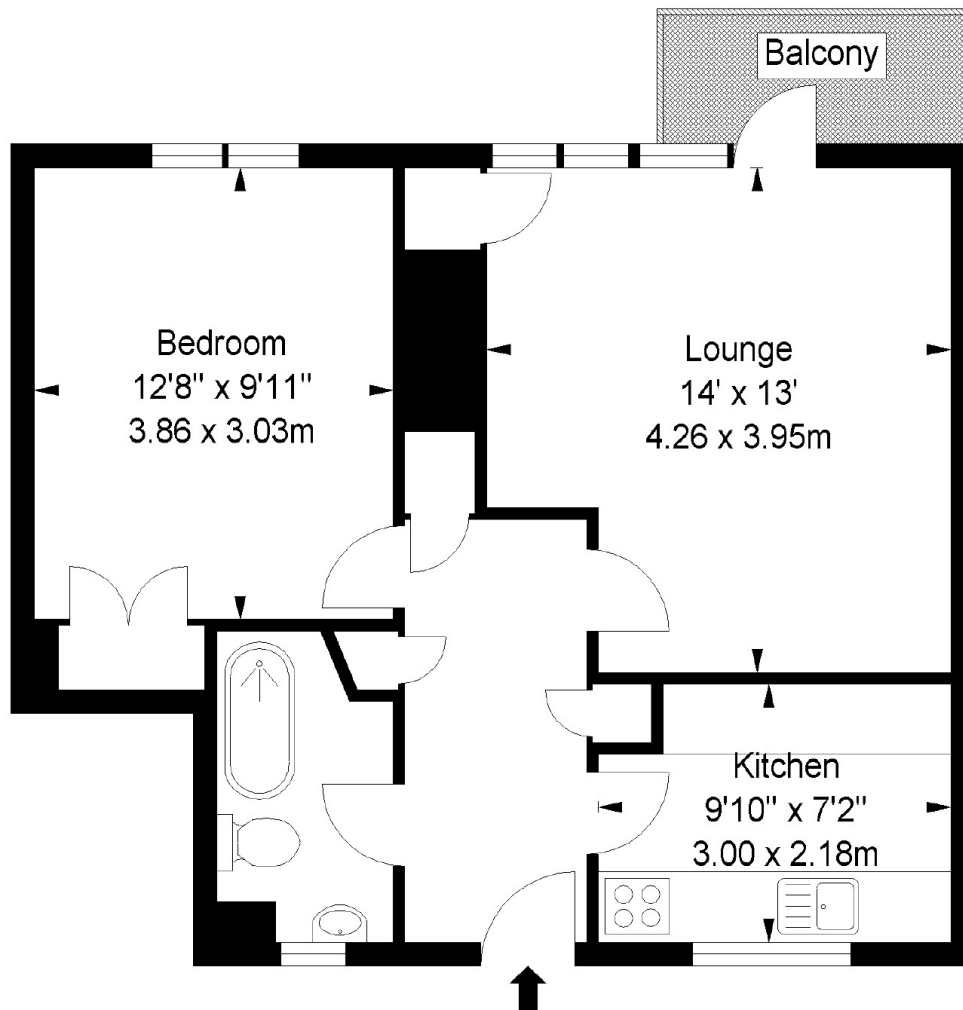
### Features

One Bedroom  
Third Floor  
Brand New Bathroom Suite  
Balcony  
Furnished  
Wood Floors

**Wolseley Street,  
London, SE1**

**Peter Butler House, SE1**

Approximate Gross Internal Area  
517 sq ft / 48.03 sq m



**Third Floor**

Illustration For Identification Purposes Only. Not To Scale  
As Defined by RICS - Code of Measuring Practice  
[www.polarisltd.co.uk](http://www.polarisltd.co.uk)

**Dexters**

Tower Bridge  
50 Shad Thames  
London  
SE1 2LY  
Lettings  
0207 650 5105

Energy Rating: C. We aim to make our particulars both accurate and reliable. However they are not guaranteed; nor do they form part of an offer or contract. If you require clarification on any points then please contact us, especially if you're traveling some distance to view. Please note that appliances and heating systems have not been tested and therefore no warranties can be given as to their good working order.

 **RICS** | Regulated  
Estate Agent  
and Letting Agent

[dexters.co.uk](http://dexters.co.uk)