

## Shad Thames, SE1

£2,300 Per calendar month

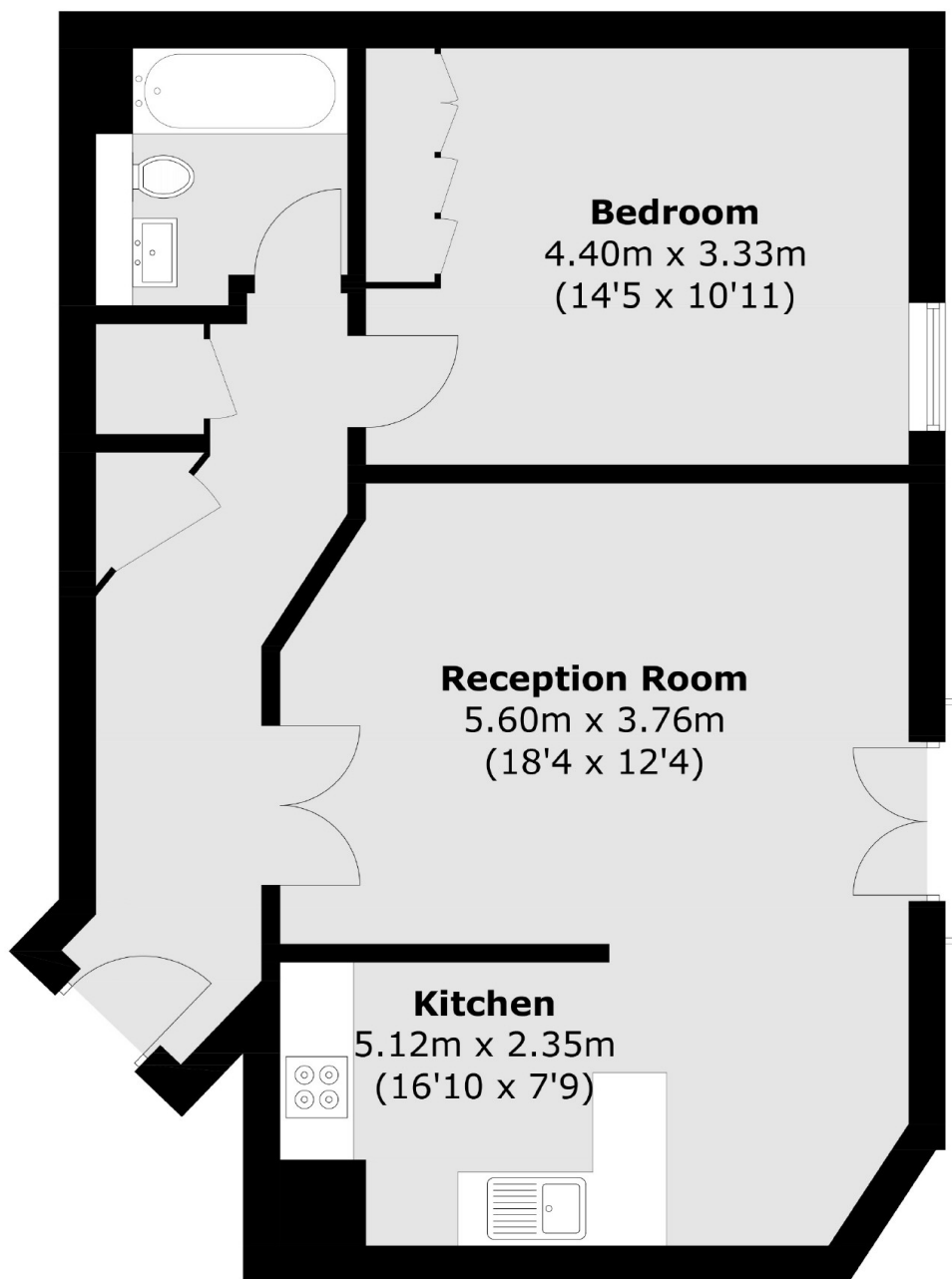
A one double bedroom apartment set in a lovely wharf development. This large and well designed modern apartment features open plan living and kitchen with a dishwasher. Parking included. The bathroom has also been newly refurbished.

St Andrews Wharf Is an upmarket development in the heart of Shad Thames. The property is just moment from the river front where there are numerous restaurants and bars to choose from.

### Features

- One Double Bedrooms
- New Bathroom
- Dishwasher
- Part Furnished
- 650 Square Feet
- Parking

Shad Thames,  
London, SE1



Total area (approx.): 62.0 sq. m (667.4 sq. ft)