



## Crown Square, SE1

£1,107 Per week

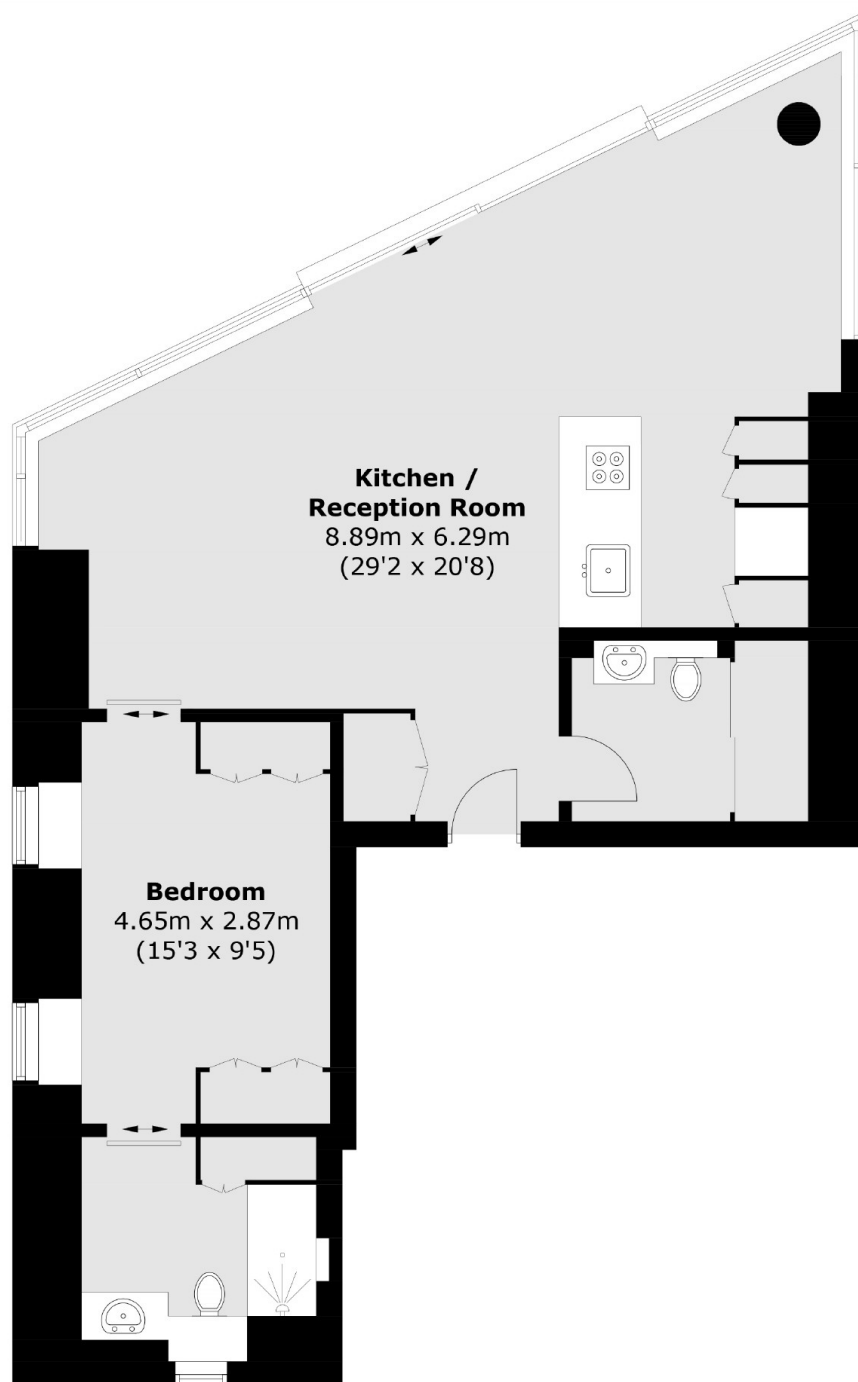
A one bedroom apartment on the 7th floor with floor-to-ceiling double-glazed windows allowing maximum light in and also emphasising the feeling of space. The highest quality fittings have been installed, including Miele kitchen appliances, underfloor heating, comfort cooling and home automated system for lighting and blind control.

One Tower Bridge sits on the banks of the River Thames, and is considered one of the most sought after developments in London. London Bridge, Tower Hill and Tower Gateway are all within walking distance.

### Features

- One Double Bedroom
- Swimming Pool
- Furnished
- Gym
- Spa
- One Tower Bridge

# Crown Square, London, SE1



Total area (approx.): 76.4 sq. m (822.4 sq. ft)

## Dexters

Tower Bridge  
50 Shad Thames  
London  
SE1 2LY  
Lettings  
0207 650 5105

Energy Rating: . We aim to make our particulars both accurate and reliable. However they are not guaranteed; nor do they form part of an offer or contract. If you require clarification on any points then please contact us, especially if you're traveling some distance to view. Please note that appliances and heating systems have not been tested and therefore no warranties can be given as to their good working order.

 **RICS** | Regulated  
Estate Agent  
and Letting Agent

[dexters.co.uk](https://www.dexters.co.uk)