



Crown Square, SE1

£4,604 Per week

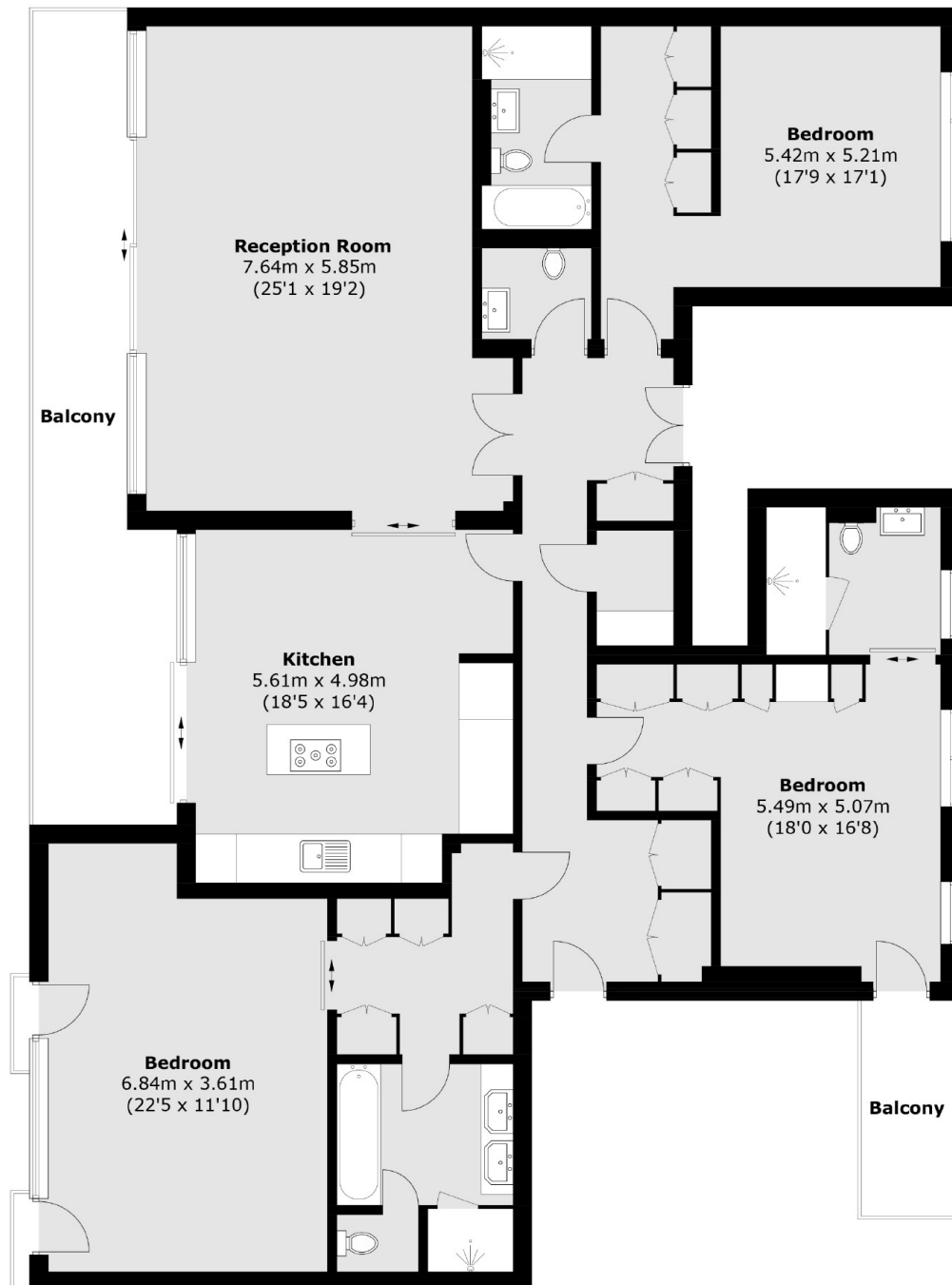
A stunning four bedroom apartment on the fourth floor offering five star living in the heart of London with uninterrupted views of one of the world's most iconic landmarks from one of two expansive balconies. Each double bedroom has its own en-suite and the property comes in at just under 2,400 sq ft.

The development itself offers luxury living with 24-hour concierge, gym, sauna, 20m plunge pool and underground car parking.

Features

- Four Double Bedrooms
- Four Bathrooms
- Two Terraces
- Air-Conditioned
- On Site Facilities
- One Tower Bridge

Crown Square, London, SE1



Total area (approx.): 209.8 sq. m (2,258.3 sq. ft)
Balcony area (approx.): 28.6 sq. m (307.8 sq. ft)