



## Woodland Crescent, SE16

£830 Per week

A modern penthouse property less than one minute's walk from Canada Water Underground Station. The property is fully furnished, has a wrap around balcony with views of the city and a separate office.

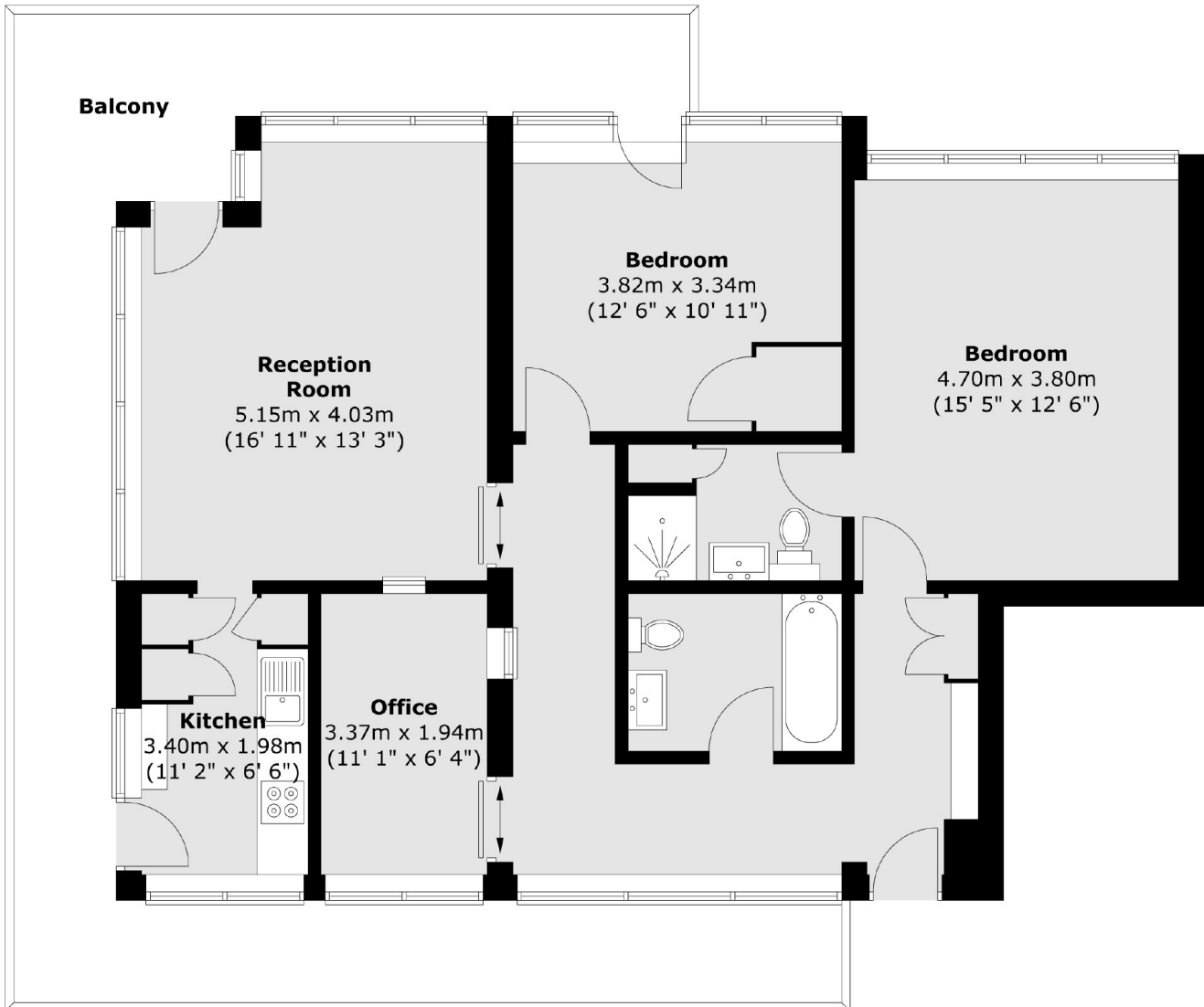
Sycamore House located in Woodland Crescent is a gated development with numerous restaurants and shops in the immediate vicinity and Canada Water Underground provides easy access to the City or Canary Wharf.

### Features

- Two Double Bedrooms
- Home Office
- Two Bathroom
- Furnished
- Balcony
- Canada Water

# Woodland Crescent, London, SE16

## Fourth Floor



Total area (approx.) : 93.9 sq. m (1011 sq. ft)  
Total balcony area (approx.) : 28.7 sq. m (309 sq. ft)