



## Rotherhithe Street, SE16

£923 Per week

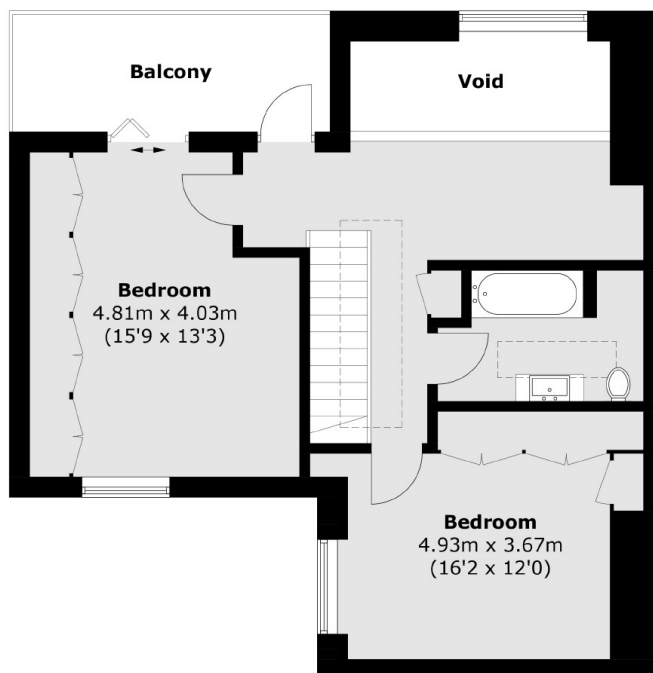
A brand new two double bedroom apartment to let in the heart of Rotherhithe. The Clipper is a sought after private development overlooking a beautiful park. The unit is split level, and finished to the highest of standards.

The Clipper is well connected with 24 hour bus routes giving direct access to London Bridge & Bermondsey as well as The Thames Clipper operating directly over to Canary Wharf. The closest station is Rotherhithe which runs Overground trains to East & North London. There is also the ferry from the Hilton Doubletree which takes just 5 minutes to Canary Wharf.

### Features

- Two Double Bedrooms
- New Build
- Private Entrance
- Secure Development
- Hilton Ferry
- Split Level

# Rotherhithe Street, London, SE16



**Third Floor**



**Second Floor**

Total area (approx.): 90.3 sq. m ( 972.0 sq. ft)  
Balcony area: 8.1 sq. m ( 87.2 sq. ft)