



Quebec Way, SE16

£877 Per week

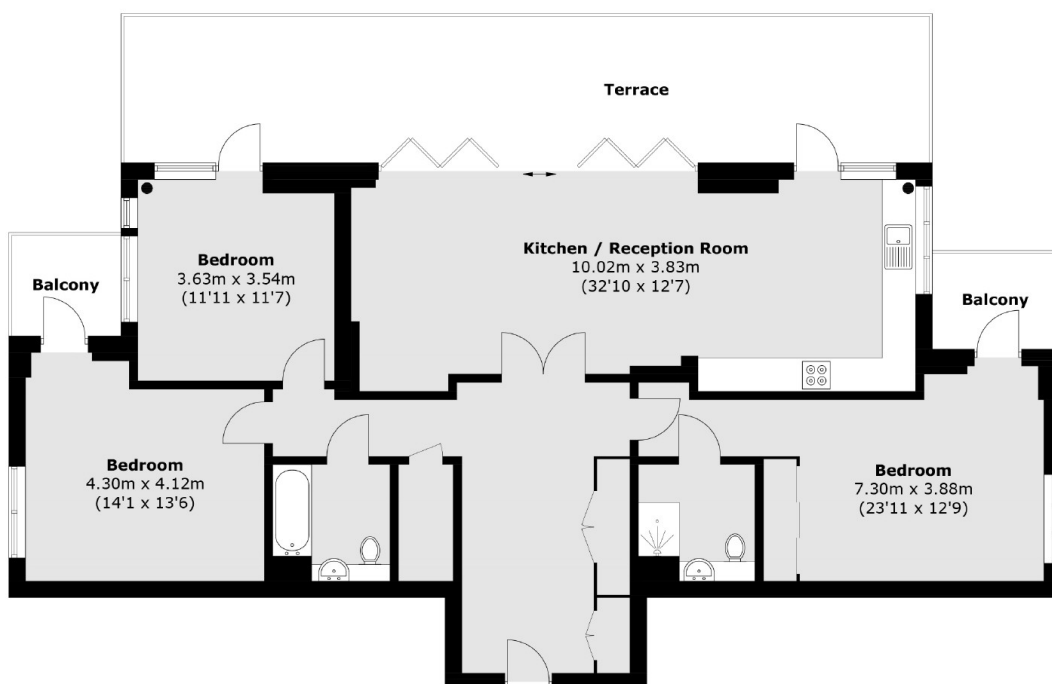
Arranged over 125sq metres of internal space, three bedroom, two bathroom apartment boasts a private roof terrace of over 30sq metres of additional entertaining space and features a wealth of beautifully and tastefully chosen furnishings, fixtures and fittings.

Maple Quays is an upmarket new build development in the heart of Canada Water. The station which is on the Jubilee Line and the London Overground is just short walk from the property.

Features

- Three Double Bedrooms
- Two Bathrooms
- Large Balcony
- Canada Water
- 1200sqft
- Furnished

Quebec Way, London, SE16



Total area (approx.): 125.0 sq. m (1,345.5 sq. ft)
Terrace / Balconies: 45.7 sq. m (492.0 sq. ft)