



## Rotherhithe Street, SE16

£600 Per week

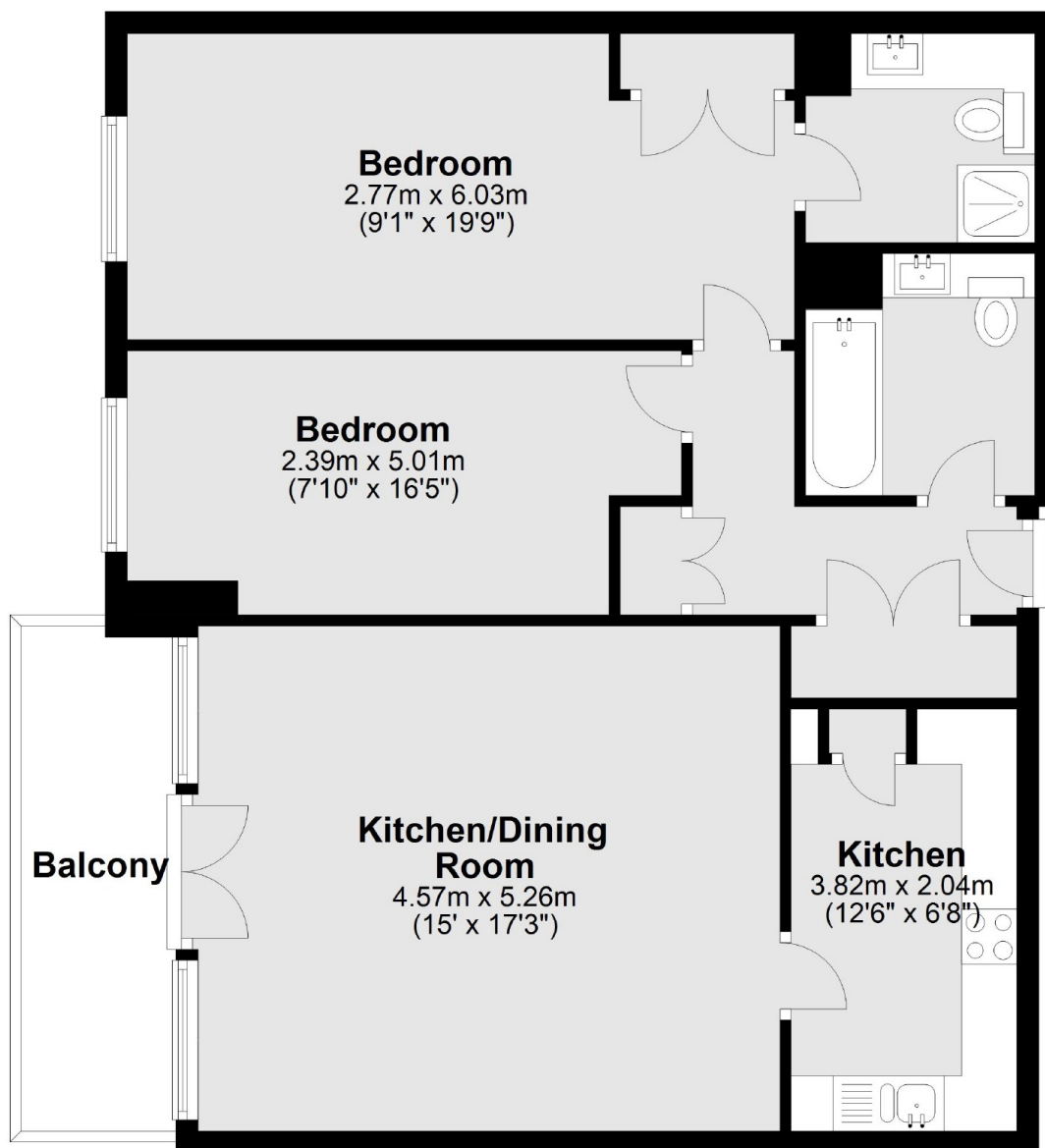
A newly refurbished two bedroom two bathroom property offering a private balcony with direct views of River Thames. The unit also comes with access to underground parking and communal garden.

Somerville Point is a sought after development overlooking the river and has a recent refurbishment to the internal reception and hallways. There are easy bus links to Canada Water Station which is on the Jubilee Line. Surrey Quays shopping is also just a short walk from the property.

### Features

- Two Double Bedroom
- Two Bathroom
- Private Balcony
- River Views
- Furnished
- Underground Parking

# Rotherhithe Street, London, SE16



Main area: Approx. 77.5 sq. metres (834.5 sq. feet)

Plus balconies, approx. 6.9 sq. metres (73.8 sq. feet)