



Rainbow Quay, SE16

£715 Per week

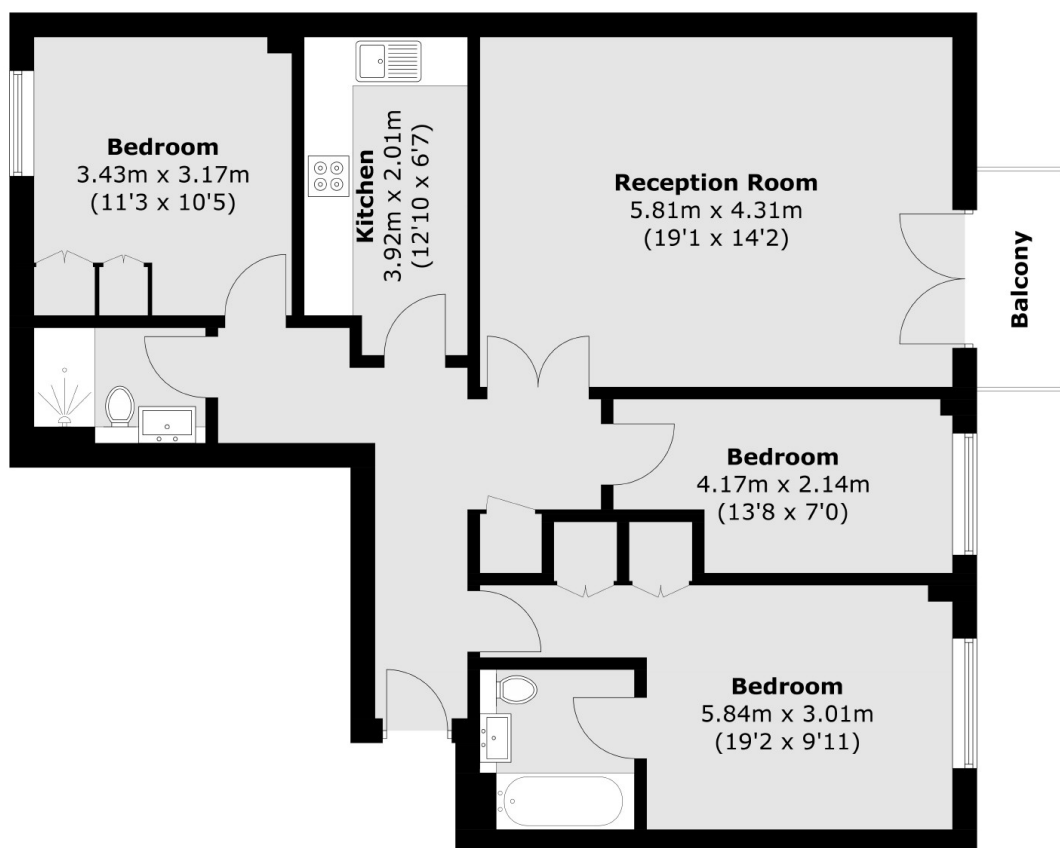
Three double bedroom dockside property located in the popular Greenland Dock. This bright and spacious apartment is in a quiet peaceful location overlooking the dock and towards Canary Wharf.

Situated with easy access to Surrey Quays (London Overground), Canada Water (Jubilee Line), and the Thames Clipper river boats to Canary Wharf.

Features

- Three Bedrooms
- Balcony
- Dockside Views
- Dockside Development
- Thames Clipper
- Canada Water

Rainbow Quay, London, SE16



Total area (approx.): 88.9 sq. m (956.9 sq. ft)
Balcony area (approx.): 2.9 sq. m (31.2 sq. ft)