



## Queen Elizabeth Street, SE1

£946 Per week

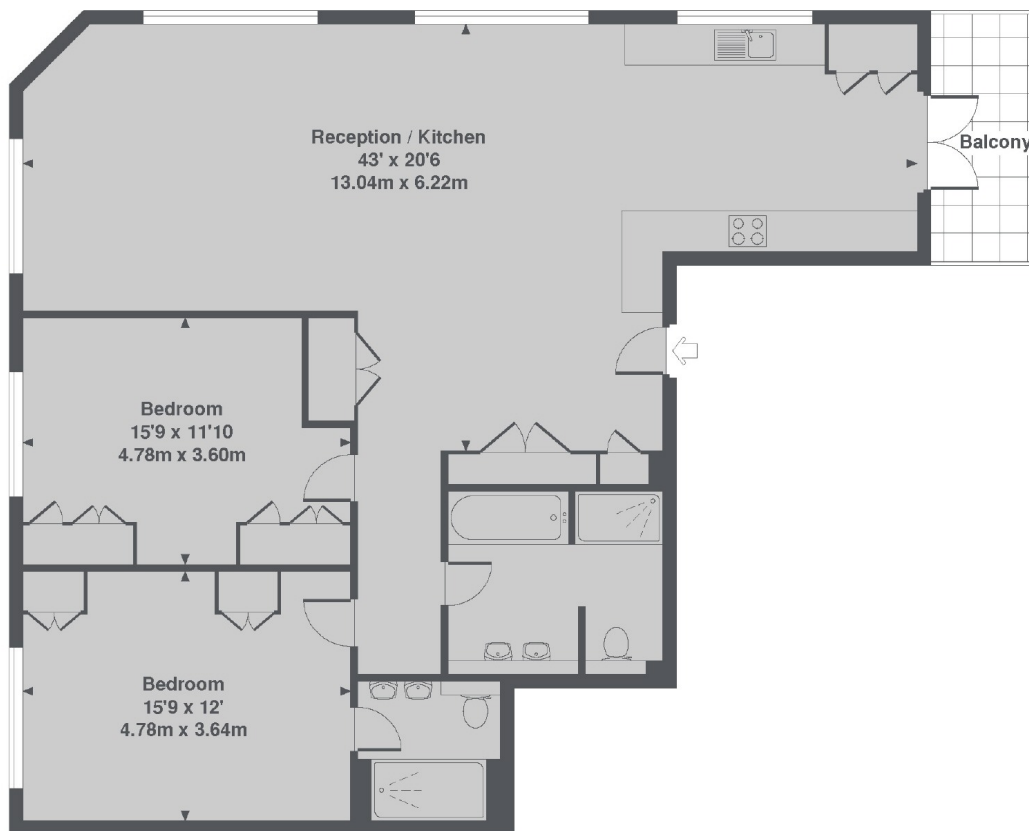
A two double bedroom apartment set within this warehouse conversion originally built in 1904. The property has large windows, high ceilings and parquet wood flooring.

Shad Thames is trendy and those who know it, love it. You can walk into the city, over Tower Bridge or get the underground from London Bridge or Bermondsey.

### Features

- Two Double Bedrooms
- Two Bathrooms
- Balcony
- Warehouse Conversion
- 1240 Square Feet
- Shad Thames

# Queen Elizabeth Street, London, SE1



Queen Charlotte Street, SE1  
Total Approx. Floor area 1240 Sq. Ft. (115.2 Sq. M.)