



Rotherhithe Street, SE16

£738 Per week

An immaculately refurbished three bedroom town house available to rent located right next to the river. Spacious throughout and tastefully furnished, this property will make a wonderful family home.

Located close to Rotherhithe Station and right next to the river, with the ecological park moments away this is a great location to live. There is also very easy access to the river boat service over to Canary Wharf.

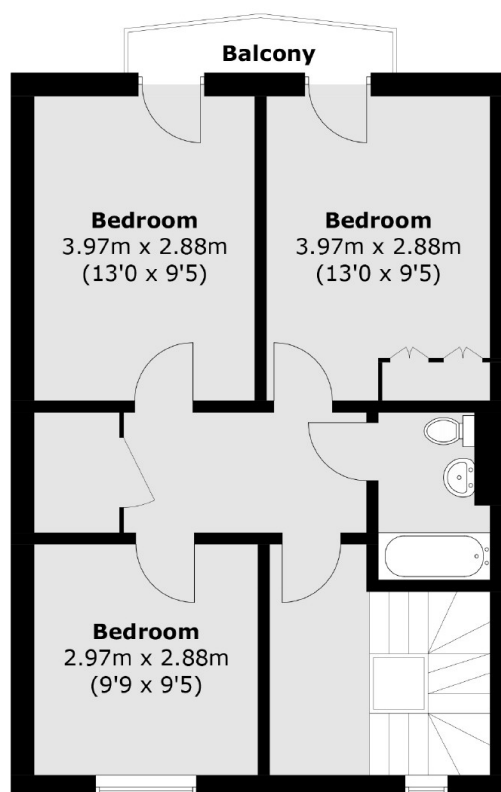
Features

- Three Double Bedrooms
- Wooden Flooring
- Parking Space
- Modern
- Resident's Garden
- River Thames

Rotherhithe Street, London, SE16



Ground Floor



First Floor

Total area (approx.): 105.2 sq. m (1,132.4 sq. ft)
Balcony (approx.): 2.1 sq. m (22.6 sq. ft)