



Crown Square, SE1

£1,661 Per week

A stunning two double bedroom, two bathroom apartment with direct views of River Thames and Tower Bridge. Finished to the highest of standards, this property will be perfect for city professionals or a couple.

One Tower Bridge sits on the banks of the River Thames, and is considered one of the most sought after developments in London. London Bridge, Tower Hill and Tower Gateway are all within walking distance.

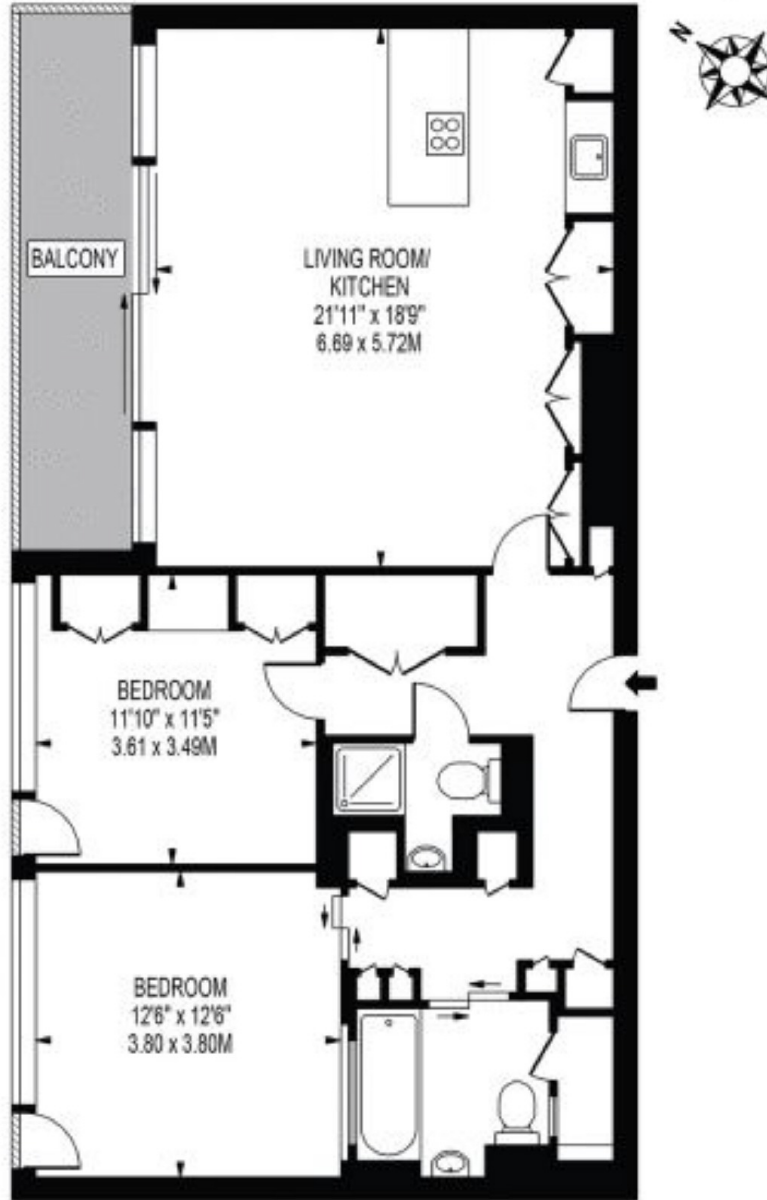
Features

- Two Double Bedroom
- Two Bathroom
- Balcony
- Gym & Swimming Pool
- Concierge
- Direct River View

Crown Square, London, SE1

BLENHEIM HOUSE

APPROXIMATE GROSS INTERNAL FLOOR AREA: 995 SQ FT - 92.44 SQ M



SECOND FLOOR

FOR ILLUSTRATION PURPOSES ONLY

THIS FLOOR PLAN SHOULD BE USED AS A GENERAL OUTLINE FOR GUIDANCE ONLY AND DOES NOT CONSTITUTE IN WHOLE OR IN PART AN OFFER OR CONTRACT. ANY INTENDING PURCHASER OR LESSEE SHOULD SATISFY THEMSELVES BY INSPECTION, SEARCHES, ENQUIRIES AND FULL SURVEY AS TO THE CORRECTNESS OF EACH STATEMENT. ANY AREAS, MEASUREMENTS OR DISTANCES QUOTED ARE APPROXIMATE AND SHOULD NOT BE USED TO VALUE A PROPERTY OR BE THE BASIS OF ANY SALE OR LET.

Dexters

Tower Bridge
50 Shad Thames
London
SE1 2LY

Lettings
0207 650 5105

Energy Rating: B. We aim to make our particulars both accurate and reliable. However they are not guaranteed; nor do they form part of an offer or contract. If you require clarification on any points then please contact us, especially if you're traveling some distance to view. Please note that appliances and heating systems have not been tested and therefore no warranties can be given as to their good working order.

 **RICS** | Regulated
Estate Agent
and Letting Agent

dexters.co.uk