



## Gainsford Street, SE1

£507 Per week

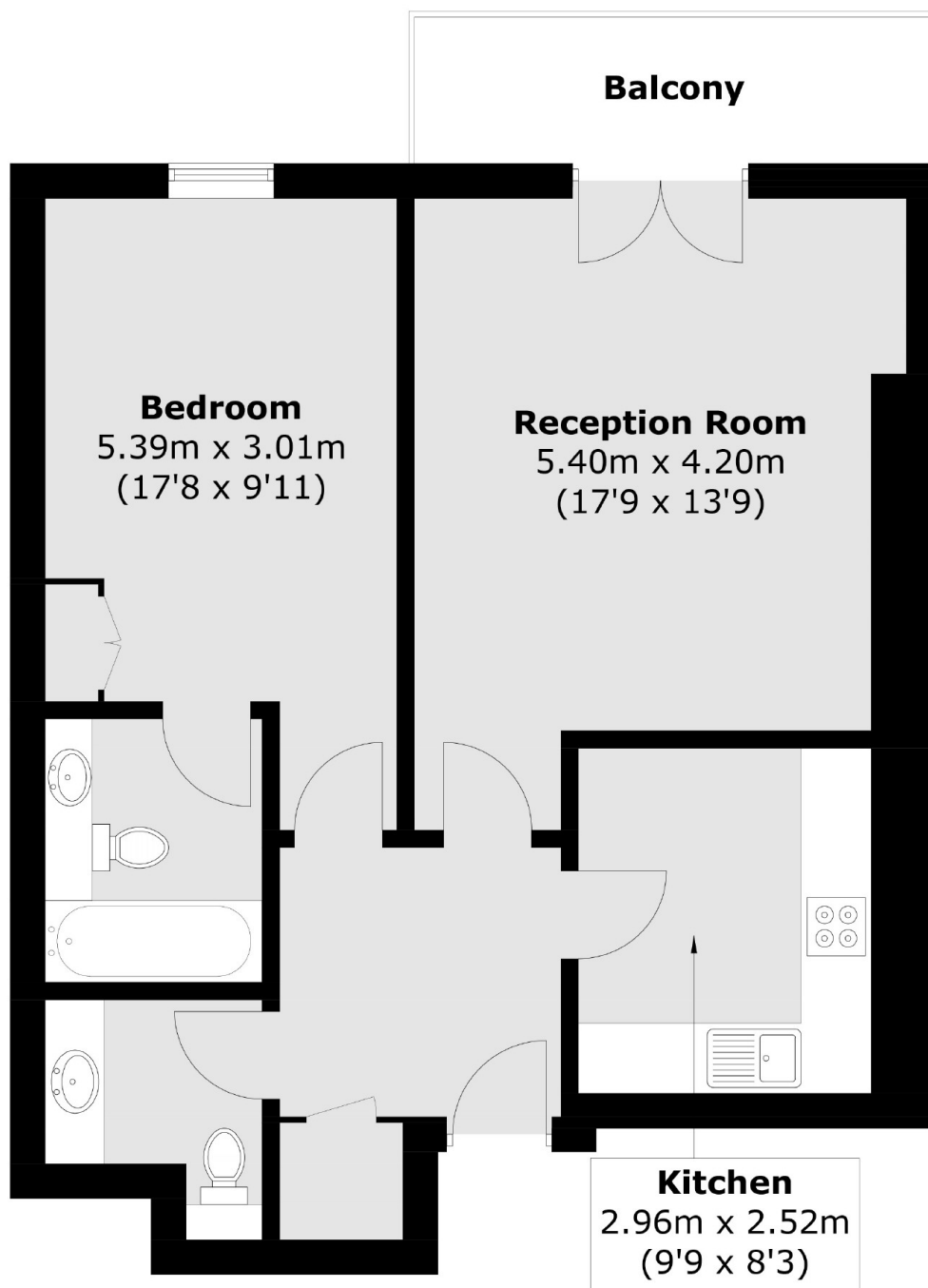
A one double bedroom flat located in the heart of Shad Thames. An ideal home for a single occupant or professional couple. There is also a great balcony over looking the courtyard.

Shad Thames is trendy and those who know it, love it. You can walk into the city, over Tower Bridge or take the underground from London Bridge or Bermondsey.

### Features

- One Double Bedroom
- Furnished
- Balcony
- Dishwasher
- Wood Flooring
- Shad Thames

# Gainsford Street, London, SE1



Total area (approx.): 59.0 sq. m (635.1 sq. ft)  
Balcony area (approx.): 5.6 sq. m (60.3 sq. ft)