

Duchess Walk, SE1

£690 Per week

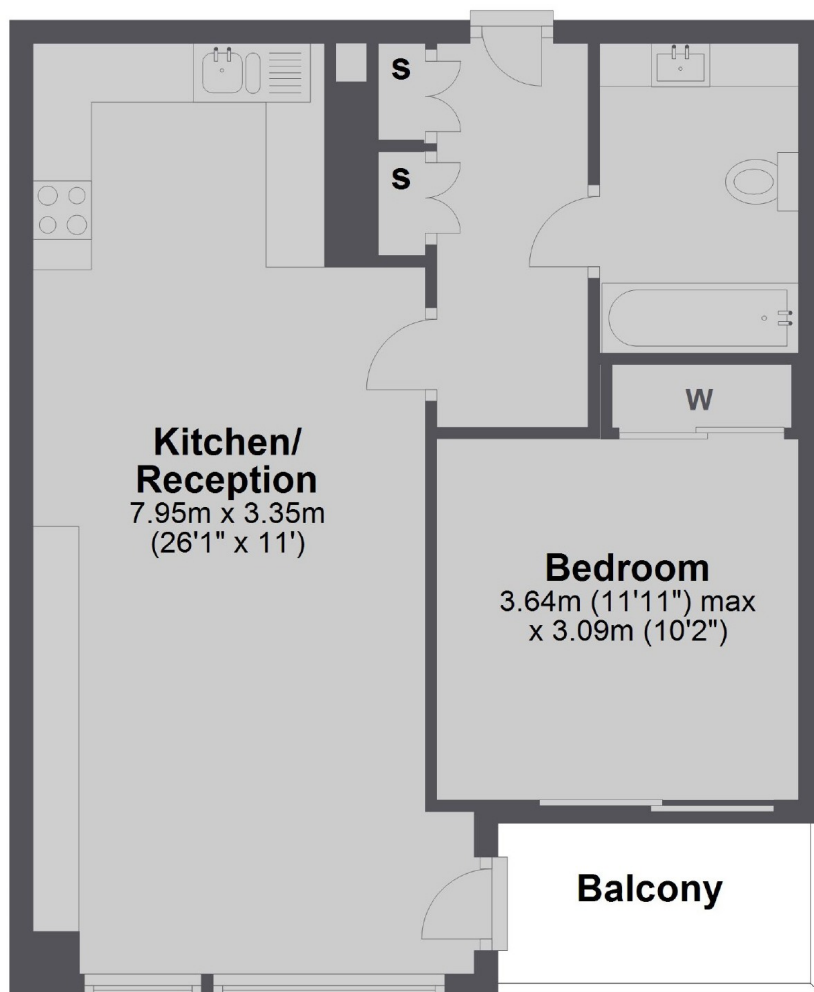
A stunning apartment situated in Tudor House at One Tower Bridge. Furnished to the highest of standards, this property will be perfect for a city professional.

One Tower Bridge sits on the banks of the River Thames, and is considered one of the most sought after developments in London. London Bridge, Tower Hill and Tower Gateway are all within walking distance.

Features

- One Double Bedroom
- Furnished
- Resident's Health Club
- Balcony
- Concierge
- Tower Bridge

Duchess Walk, London, SE1



Total area: approx. 48.4 sq. metres (520.6 sq. feet)