



LANSDOWN TERRACE CHELTENHAM
£1,250 PER MONTH AVAILABLE 07/06/2024




Hamptons

THE HOME EXPERTS

{ THE PARTICULARS

Lansdown Terrace Cheltenham

£1,250 Per Month
Furnished

 2 Bedrooms
 2 Bathrooms
 1 Reception

Features

- Montpellier location, - Kitchen, - 2 Double bedrooms, - Living Room

Council Tax

Council tax band not specified

Hamptons

105 Promenade
Cheltenham, GL50 1NW
01242 263559
cheltenhamlettings@hamptons.co.uk
www.hamptons.co.uk

{ TWO BEDROOM, TWO BATHROOM APARTMENT IN MONTPELLIER.

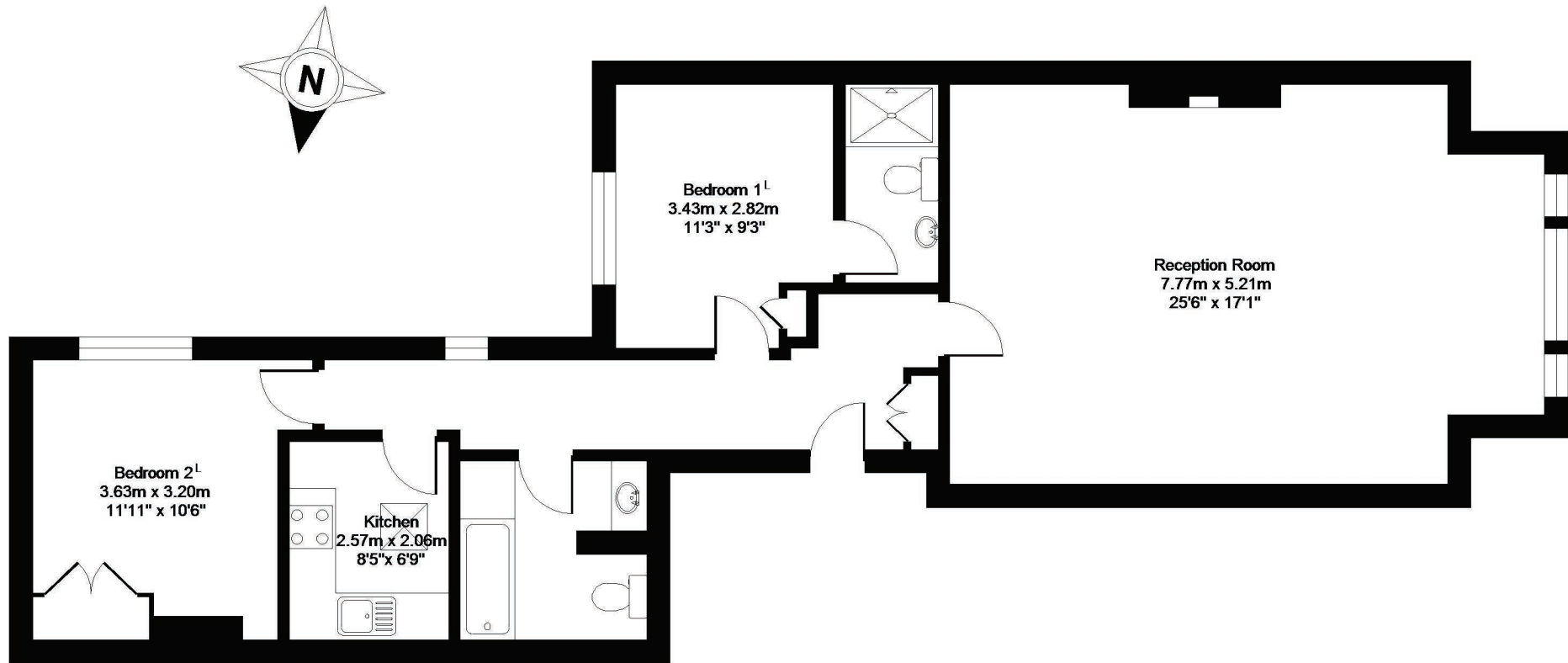
The Property

This apartment has an array of period features including a living room with floor to ceiling sash windows, contemporary kitchen, a bathroom, two double bedrooms with the main bedroom having an en suite shower room. Owner managed.

Location

Cheltenham, also known as Cheltenham Spa, is a large spa town and borough in Gloucestershire, on the edge of the Cotswolds in the South-West region of England. It is the home of the flagship race of British steeplechase horse racing, the Gold Cup, the main event of the Cheltenham Festival held every March. The town hosts several festivals of culture often featuring nationally and internationally famous contributors and attendees; Cheltenham Literature Festival, Cheltenham Jazz Festival, Cheltenham Science Festival and Cheltenham Music Festival.





FIRST FLOOR

Lansdown Terrace, Cheltenham, GL5

APPROX. GROSS INTERNAL FLOOR AREA 947 SQ FT 88 SQ METRES

Whilst every attempt has been made to ensure the accuracy of the floor plan contained here, measurements of doors, windows and rooms are approximate and no responsibility is taken for any error, omission or misstatement. These plans are for representation purposes only as defined by RICS Code of Measuring Practice and should be used as such by any prospective purchaser. Specifically no guarantee is given on the total square footage of the property if quoted on this plan. Any figure given is for initial guidance only and should not be relied on as a basis of valuation.

Copyright nichecom.co.uk 2015 Produced for Hamptons Country Lettings REF : 30237

For Clarification

We wish to inform prospective tenants that we have prepared these particulars as a general guide and they have been confirmed as accurate by the landlord. We have not verified permissions, nor carried out a survey, tested the services, appliances and specific fittings. Room sizes are approximate and measurement figures rounded: they are taken between internal wall surfaces and therefore include cupboards/shelves, etc. Accordingly, they should not be relied upon for

carpets and furnishings. It should also be noted that all fixtures and fittings, carpeted, curtains/blinds, kitchen equipment and garden statuary, whether fitted or not, are deemed removable by the landlord unless specifically itemised with these particulars. Please enquire in office or on our website for details on holding deposit and tenancy deposit figures.

