



{ BASIL STREET LONDON SW3
£13,000 PER MONTH AVAILABLE 15/09/2025

Hamptons
THE HOME EXPERTS

{ THE PARTICULARS

Basil Street London SW3

£13,000 Per Month
Furnished

 4 Bedrooms
 3 Bathrooms
 3 Receptions

Features

- 24 hour porter, - Lateral living space, - 2 kitchens, - 4 or 5 bedrooms, - 2 or 3 living rooms

Council Tax

Council Tax Band H

Hamptons
168 Brompton Road
Knightsbridge, London, SW3 1HW
020 7584 2014
KnightsbridgeLettings@hamptons.co.uk
www.hamptons.co.uk

{ ONE OF A KIND, RAISED GROUND FLOOR LATERAL APARTMENT.

The Property

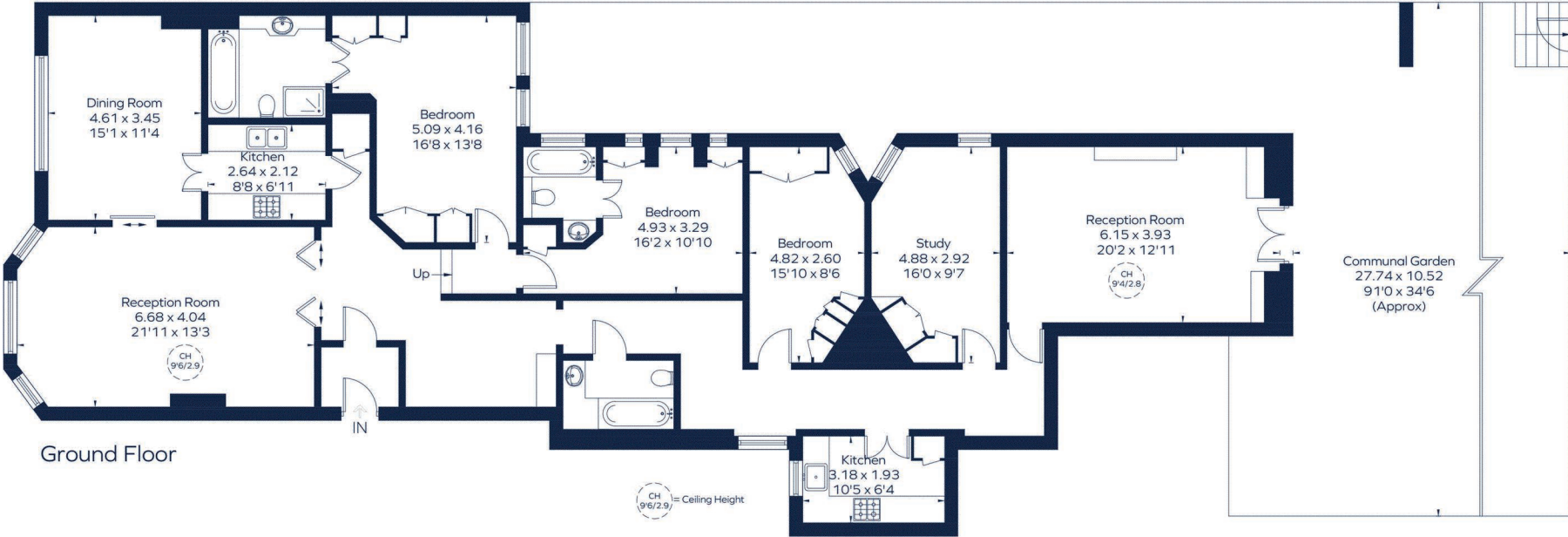
One of a kind, raised ground floor lateral apartment with four or five bedrooms, as well as two or three reception rooms. The apartment is based in Lincoln House and benefits from just under 2000 square feet, round the clock porter and direct access to the spacious and well maintained communal gardens. The property also boasts two kitchens, three modern bathrooms two of which are en suite.



LINCOLN HOUSE

Approximate Gross Internal Area

2124 sq. ft. (197.4 sq. m.)



This plan is for layout guidance only. Not drawn to scale unless stated. Windows and door openings are approximate. Whilst every care is taken in the preparation of this plan, please check all dimensions, shapes and compass bearings before making any decisions reliant upon them.

ID 1235944

For Clarification

We wish to inform prospective tenants that we have prepared these particulars as a general guide and they have been confirmed as accurate by the landlord. We have not verified permissions, nor carried out a survey, tested the services, appliances and specific fittings. Room sizes are approximate and measurement figures rounded: they are taken between internal wall surfaces and therefore include cupboards/shelves, etc. Accordingly, they should not be relied upon for

carpets and furnishings. It should also be noted that all fixtures and fittings, carpeted, curtains/blinds, kitchen equipment and garden statuary, whether fitted or not, are deemed removable by the landlord unless specifically itemised with these particulars. Please enquire in office or on our website for details on holding deposit and tenancy deposit figures.

