






{ HILL STREET MAYFAIR W1J
£1,280 PER WEEK AVAILABLE 02/06/2025

Hamptons
THE HOME EXPERTS

{ THE PARTICULARS

Hill Street Mayfair W1J

£1,280 Per Week
Furnished

 2 Bedrooms
 2 Bathrooms
 1 Reception

Features

- On-site building manager, - Available furnished or unfurnished, - Lift service, - 24 hour maintenance service, - Council Tax Band G

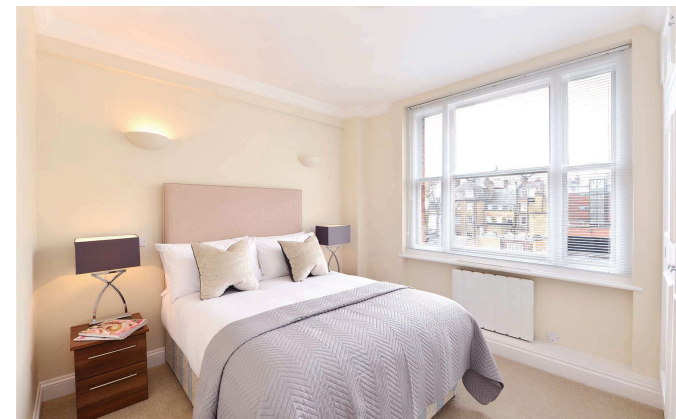
Council Tax

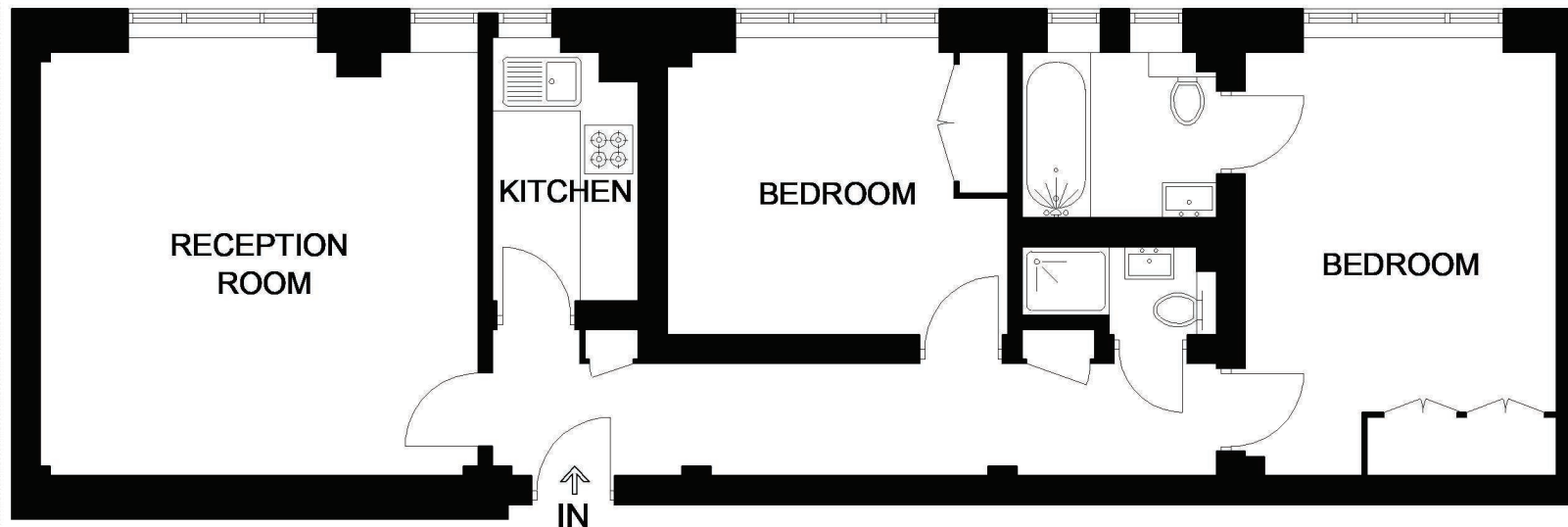
Council Tax Band G

Hamptons
168 Brompton Road
Knightsbridge, London, SW3 1HW
020 7584 2014
KnightsbridgeLettings@hamptons.co.uk
www.hamptons.co.uk

The Property

This beautiful fifth floor apartment comprises two spacious double bedroom (the master with an en-suite bathroom), two modern fitted bathrooms, airy and spacious reception room with rear facing views over Hay's Mews, modern fitted kitchen and ample storage space. All set in the heart of London's fashionable Mayfair neighbouring the famous Berkeley Square. 39 Hill Street, benefits from spacious living accommodation, lift service, on-site building manager, and is nestled conveniently between two of London's parks - Hyde Park and Green Park. Green Park, Bond Street and Marble Arch Stations provide plenty of travel options.





HILL STREET

APPROXIMATE GROSS INTERNAL AREA
733 SQ. FT. (68.1 SQ. M.)

**This plan has been drawn from supplied plans,
strictly for use as a guide only.**

This plan is for layout guidance only. Not drawn to scale unless stated. Windows and door openings are approximate. Whilst every care is taken in the preparation of this plan, please check all dimensions, shapes and compass bearings before making any decisions reliant upon them. Please be advised that Countrywide / our agents have not seen or reviewed any building regulations or planning permission in relation to works carried out to the property (ID614093)

For Clarification

We wish to inform prospective tenants that we have prepared these particulars as a general guide and they have been confirmed as accurate by the landlord. We have not verified permissions, nor carried out a survey, tested the services, appliances and specific fittings. Room sizes are approximate and measurement figures rounded: they are taken between internal wall surfaces and therefore include cupboards/shelves, etc. Accordingly, they should not be relied upon for

carpets and furnishings. It should also be noted that all fixtures and fittings, carpeted, curtains/blinds, kitchen equipment and garden statuary, whether fitted or not, are deemed removable by the landlord unless specifically itemised with these particulars. Please enquire in office or on our website for details on holding deposit and tenancy deposit figures.

