



HILL STREET MAYFAIR W1J
£890 PER WEEK AVAILABLE 03/06/2025

Hamptons
THE HOME EXPERTS

{ THE PARTICULARS

Hill Street Mayfair W1J

£890 Per Week
Furnished

-  1 Bedroom
-  1 Bathroom
-  1 Reception

Features

Lift service, Available furnished or unfurnished, 24-hour emergency helpline service, Council Tax Band G

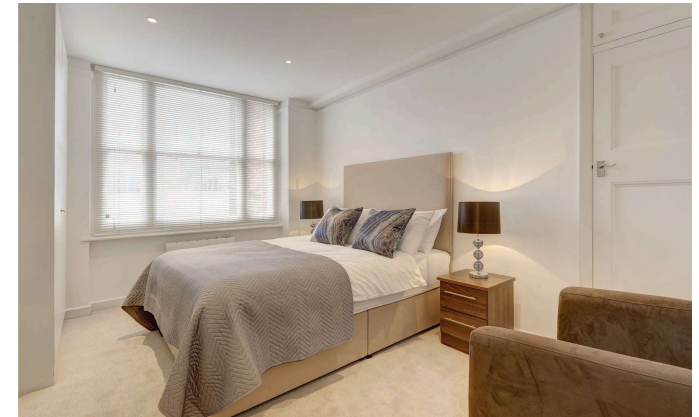
Council Tax

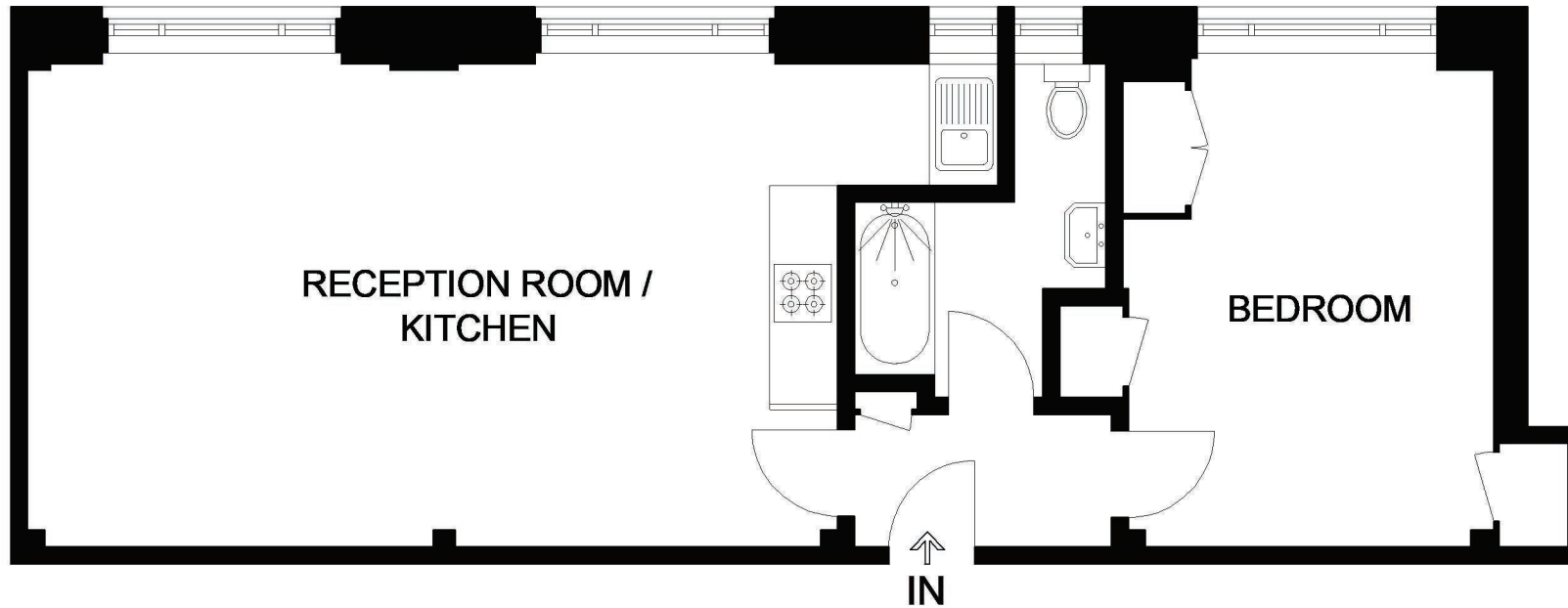
Council Tax Band G

Hamptons
168 Brompton Road
Knightsbridge, London, SW3 1HW
020 7584 2014
KnightsbridgeLettings@hamptons.co.uk
www.hamptons.co.uk

The Property

This bright spacious one bedroom fifth-floor apartment is located on one of Mayfair's most prestigious roads neighbouring the famous Berkeley Square. The apartment is set over 602sq ft and offers a large double bedroom, modern fitted bathroom, spacious reception room and modern fitted kitchen and benefits from ample storage space. Hill Street, benefits from spacious living accommodation, lift service, on-site building manager, and is nestled conveniently between two of London's parks Hyde Park and Green Park. The transport links include underground stations which are Green Park Station and Bond Street station, Marble Arch Station all within a short stroll away.





HILL STREET

APPROXIMATE GROSS INTERNAL AREA
607 SQ. FT. (56.4 SQ. M.)

**This plan has been drawn from supplied plans,
strictly for use as a guide only.**

This plan is for layout guidance only. Not drawn to scale unless stated. Windows and door openings are approximate. Whilst every care is taken in the preparation of this plan, please check all dimensions, shapes and compass bearings before making any decisions reliant upon them. Please be advised that Countrywide / our agents have not seen or reviewed any building regulations or planning permission in relation to works carried out to the property (ID631937)

For Clarification

We wish to inform prospective tenants that we have prepared these particulars as a general guide and they have been confirmed as accurate by the landlord. We have not verified permissions, nor carried out a survey, tested the services, appliances and specific fittings. Room sizes are approximate and measurement figures rounded: they are taken between internal wall surfaces and therefore include cupboards/shelves, etc. Accordingly, they should not be relied upon for

carpets and furnishings. It should also be noted that all fixtures and fittings, carpeted, curtains/blinds, kitchen equipment and garden statuary, whether fitted or not, are deemed removable by the landlord unless specifically itemised with these particulars. Please enquire in office or on our website for details on holding deposit and tenancy deposit figures.

