



**HILL STREET MAYFAIR W1J**  
**£756 PER WEEK** AVAILABLE 06/05/2025

**Hamptons**  
THE HOME EXPERTS

# { THE PARTICULARS

Hill Street Mayfair W1J

£756 Per Week  
Furnished

 1 Bedroom  
 1 Bathroom  
 1 Reception

## Features

- One bedroom, - Bathroom, - Reception room, - Kitchen, - On Site Building Manager, - Video Entry, - Pet Friendly, - Lift service, - Superfast Broadband, - Offered Furnished or Unfurnished, - High Quality Finish, - Council Tax Band E

## Council Tax

Council Tax Band E

Hamptons  
168 Brompton Road  
Knightsbridge, London, SW3 1HW  
020 7584 2014  
KnightsbridgeLettings@hamptons.co.uk  
www.hamptons.co.uk

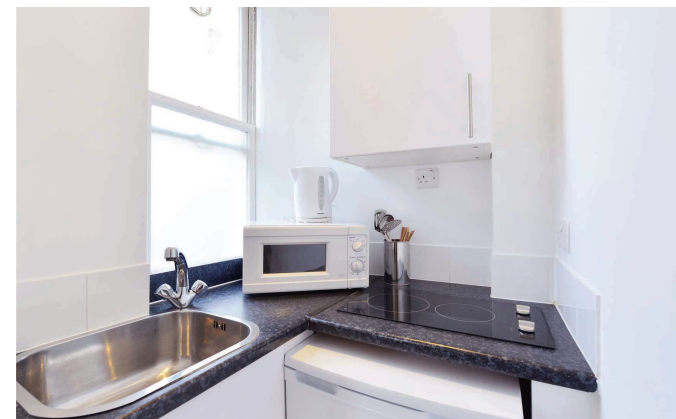
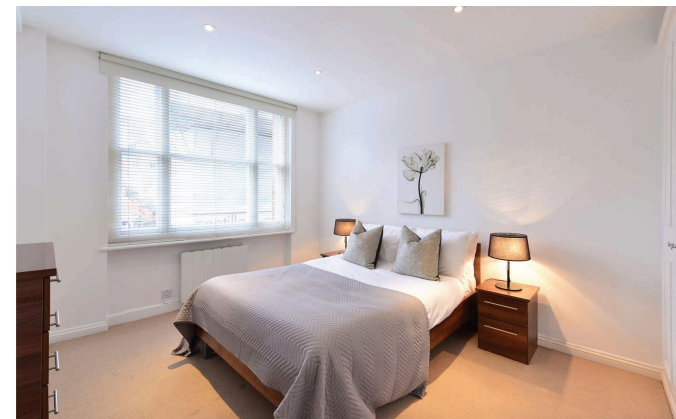
# { A ONE BEDROOM HOME AWAY FROM HOME IN CENTRAL LONDON.

## The Property

Set over 421 sq ft, this one-bedroom apartment comprises of a large double bedroom with ample storage space, modern fitted bathroom, spacious reception room with rear facing views over Hay's Mews and a unique kitchenette and access to a private gated communal garden. The apartment is in one of London's most prestigious locations, Mayfair. The building benefits from spacious living accommodation, lift service, on-site building manager, and is nestled conveniently between two of London's parks - Hyde Park and Green Park.

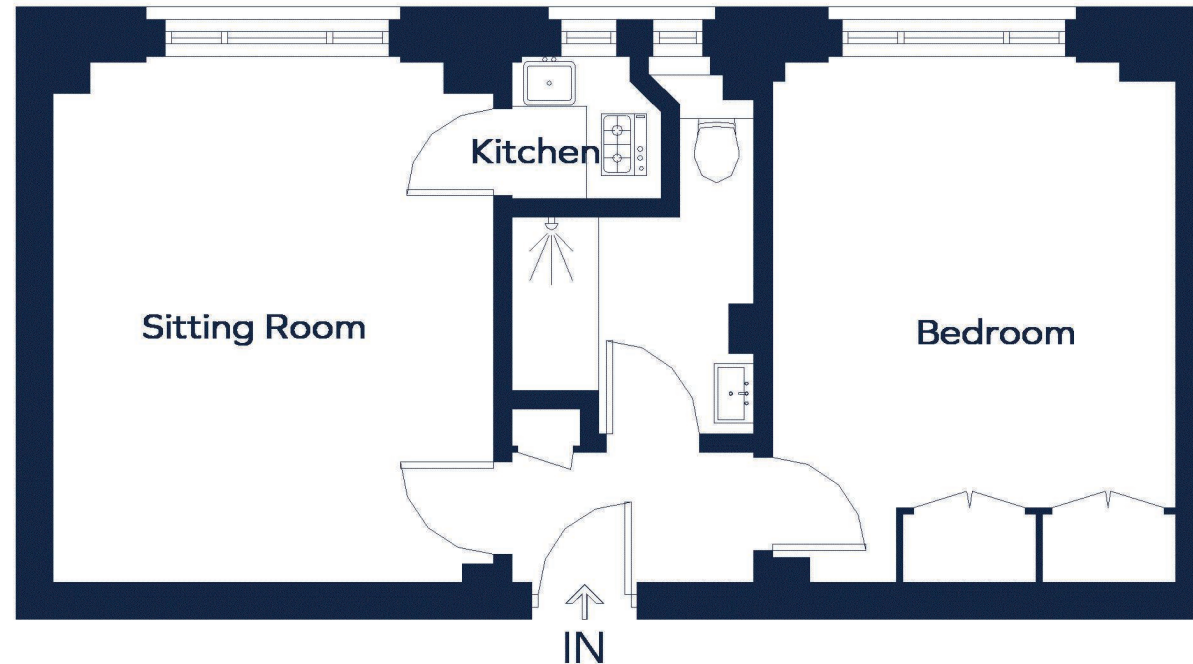
## Location

This fantastic property is situated in the heart of Mayfair which is one of London's finest residential areas with exclusive shops and restaurants. With the closest transport links of Green Park (0.4 miles) and Bond Street (0.5 miles)



# HILL STREET

Approximate Gross Internal Area= 425 sq. ft. (39.5 sq. m.)



Drawn for illustration and identification purposes only .  
ID 792950

## For Clarification

We wish to inform prospective tenants that we have prepared these particulars as a general guide and they have been confirmed as accurate by the landlord. We have not verified permissions, nor carried out a survey, tested the services, appliances and specific fittings. Room sizes are approximate and measurement figures rounded: they are taken between internal wall surfaces and therefore include cupboards/shelves, etc. Accordingly, they should not be relied upon for

carpets and furnishings. It should also be noted that all fixtures and fittings, carpeted, curtains/blinds, kitchen equipment and garden statuary, whether fitted or not, are deemed removable by the landlord unless specifically itemised with these particulars. Please enquire in office or on our website for details on holding deposit and tenancy deposit figures.

