



MANSON PLACE SOUTH KENSINGTON SW7
£650 PER WEEK AVAILABLE 31/07/2024

Hamptons

THE HOME EXPERTS

{ THE PARTICULARS

**Manson Place South Kensington
SW7**

**£650 Per Week
Furnished**

 **1 Bedroom**
 **1 Bathroom**
 **1 Reception**

Features

- Reception Room, - Kitchen, - 1 Bedroom,
- Modern Bathroom, - Council Tax Band F

Council Tax

Council Tax Band F

Hamptons

168 Brompton Road
Knightsbridge, London, SW3 1HW
020 7584 2014
KnightsbridgeLettings@hamptons.co.uk
www.hamptons.co.uk

{ A MODERN ONE BEDROOM APARTMENT WITH WOOD FLOOR

The Property

This spacious apartment comprises a large reception room, fitted kitchen, a large double bedroom with built in wardrobes and a modern bathroom. The property further benefits from wooden floors throughout.

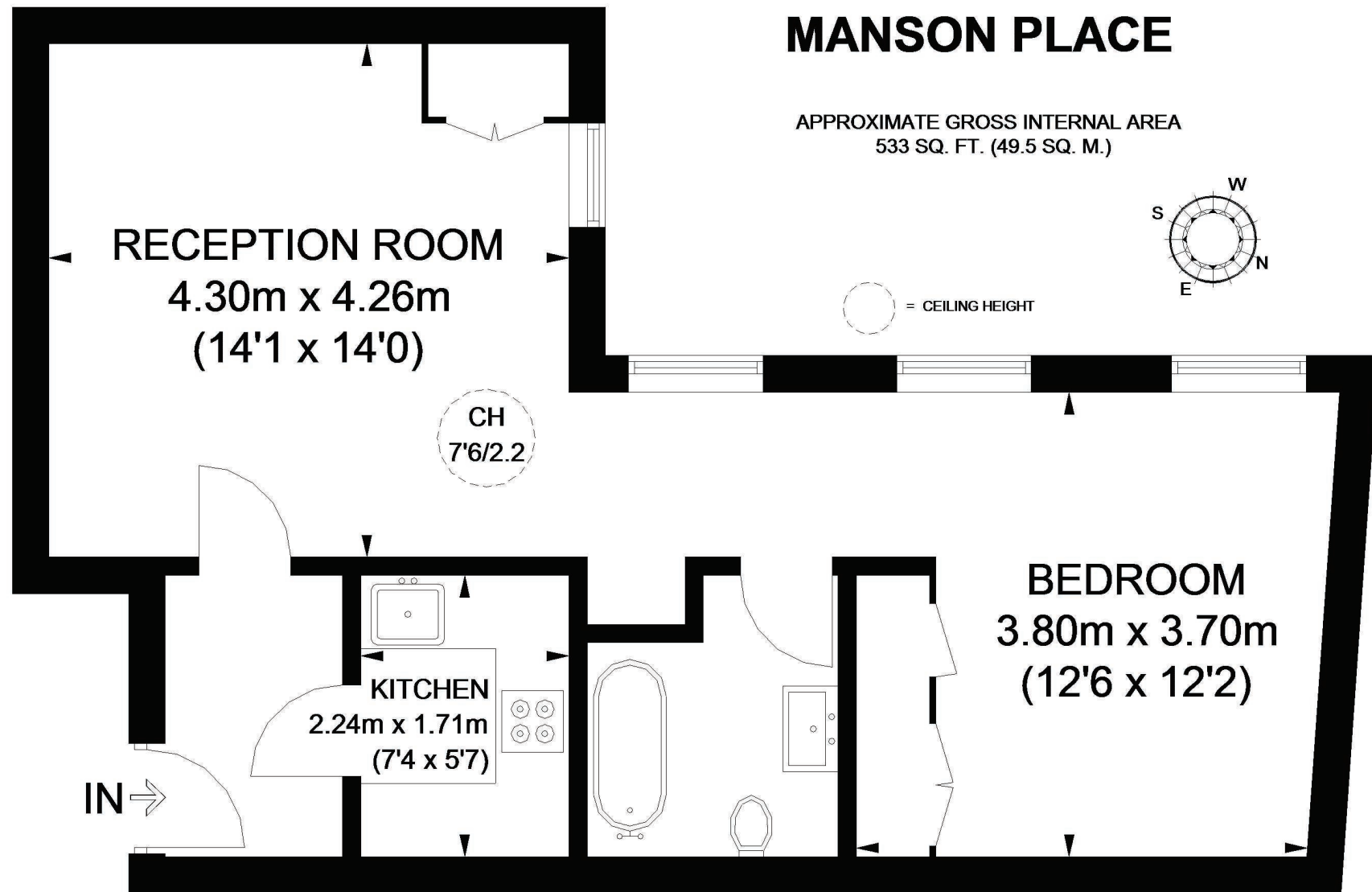
Location

The location of this flat provides excellent access to the varied shopping, eateries and transport links of South Kensington and Gloucester Road as well as the wide open green spaces of Hyde Park.



MANSON PLACE

APPROXIMATE GROSS INTERNAL AREA
533 SQ. FT. (49.5 SQ. M.)



LOWER GROUND FLOOR

This plan is for layout guidance only. Not drawn to scale unless stated. Windows and door openings are approximate. Whilst every care is taken in the preparation of this plan, please check all dimensions, shapes and compass bearings before making any decisions reliant upon them. Please be advised that Countrywide / our agents have not seen or reviewed any building regulations or planning permission in relation to works carried out to the property (ID512267)

For Clarification

We wish to inform prospective tenants that we have prepared these particulars as a general guide and they have been confirmed as accurate by the landlord. We have not verified permissions, nor carried out a survey, tested the services, appliances and specific fittings. Room sizes are approximate and measurement figures rounded: they are taken between internal wall surfaces and therefore include cupboards/shelves, etc. Accordingly, they should not be relied upon for

carpets and furnishings. It should also be noted that all fixtures and fittings, carpeted, curtains/blinds, kitchen equipment and garden statuary, whether fitted or not, are deemed removable by the landlord unless specifically itemised with these particulars. Please enquire in office or on our website for details on holding deposit and tenancy deposit figures.

