



SONSLOW GARDENS LONDON SW7
£725 PER WEEK AVAILABLE NOW

Hamptons

THE HOME EXPERTS

{ THE PARTICULARS

Onslow Gardens London SW7

**£725 Per Week
Furnished**

 **1 Bedroom**
 **1 Bathroom**
 **1 Reception**

Features

- Bedroom, - Bathroom, - Reception, -
Kitchen, - Third Floor, - Lift, - Access to
communal gardens, - Furnished, - Council
Tax Band

Council Tax

Council tax band not specified

Hamptons

168 Brompton Road
Knightsbridge, London, SW3 1HW
020 7584 2014
KnightsbridgeLettings@hamptons.co.uk
www.hamptons.co.uk

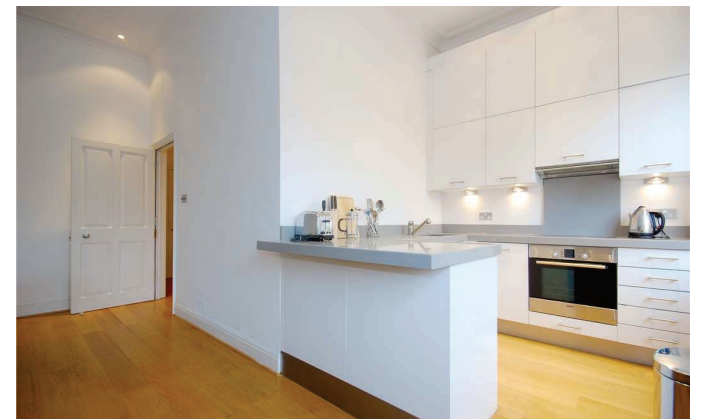
{ A STUNNING APARTMENT WITH LIFT AND COMMUNAL GARDENS

The Property

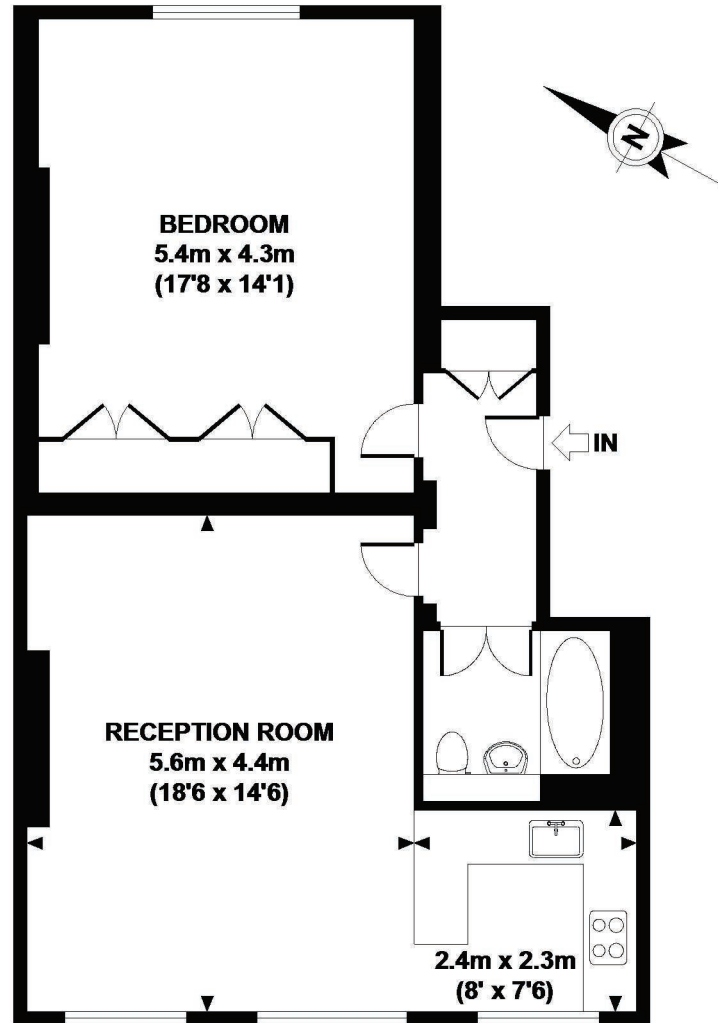
Situated on the third floor of a beautifully maintained period conversion with lift is this stunning one bedroom apartment benefiting from high ceilings and wood flooring in the reception room. Comprising a bright, semi open plan west facing kitchen and reception room, a large, spacious double bedroom with built in storage and a separate modern bathroom. The tenant benefits from access to a beautiful communal garden, available now on a furnished basis.

Location

Ideally located for the amenities of South Kensington and the surrounding area. Positioned just off the Old Brompton Road benefiting from a healthy selection of restaurants and grocery shops. The closest underground station is South Kensington (0.3 miles away) offering Circle & District Lines and with the Piccadilly Line for easy travel in to London and or Heathrow.



ONSLow GARDENS



SECOND FLOOR GROSS INTERNAL FLOOR AREA 685 SQ FT

APPROX. GROSS INTERNAL FLOOR AREA 64 SQ M / 685 SQ FT

Not to scale - This plan is for illustrative purposes only and must not be used as an absolute guarantee for measurements or calculated area.

For Clarification

We wish to inform prospective tenants that we have prepared these particulars as a general guide and they have been confirmed as accurate by the landlord. We have not verified permissions, nor carried out a survey, tested the services, appliances and specific fittings. Room sizes are approximate and measurement figures rounded: they are taken between internal wall surfaces and therefore include cupboards/shelves, etc. Accordingly, they should not be relied upon for

carpets and furnishings. It should also be noted that all fixtures and fittings, carpeted, curtains/blinds, kitchen equipment and garden statuary, whether fitted or not, are deemed removable by the landlord unless specifically itemised with these particulars. Please enquire in office or on our website for details on holding deposit and tenancy deposit figures.

