



BEAUFORT GARDENS KNIGHTSBRIDGE SW3
£1,400 PER WEEK AVAILABLE 10/04/2024

Hamptons

THE HOME EXPERTS

{ THE PARTICULARS

**Beaufort Gardens Knightsbridge
SW3**

**£1,400 Per Week
Furnished**

 **1 Bedroom**
 **1 Bathroom**
 **1 Reception**

Features

- 1 Bedroom, - 1 Bathroom, - 24 Hours
Concierge Service, - Twice Per Week
Housekeeping Service, - 513 Square Feet
Ground Floor Space, - Furnished

Council Tax

Council tax band not specified

Hamptons

168 Brompton Road
Knightsbridge, London, SW3 1HW
020 7584 2014
KnightsbridgeLettings@hamptons.co.uk
www.hamptons.co.uk

{ SPACIOUS ONE BEDROOM SERVICED APARTMENT IN KNIGHTSBRIDGE.

The Property

A spacious one bedroom serviced apartment available for short and long let located in Central Knightsbridge. Arranged on the ground floor of this period building comprising a beautifully dressed double bedroom with built in cupboards with a modern en-suite bathroom. Stylish reception room with dining space to seat four people with the kitchen well located next to the reception room and additional utility/laundry cupboard of the hallway of the apartment. Offering over 500 square feet of lateral living space on the ground floor offered furnished and available now.

Location

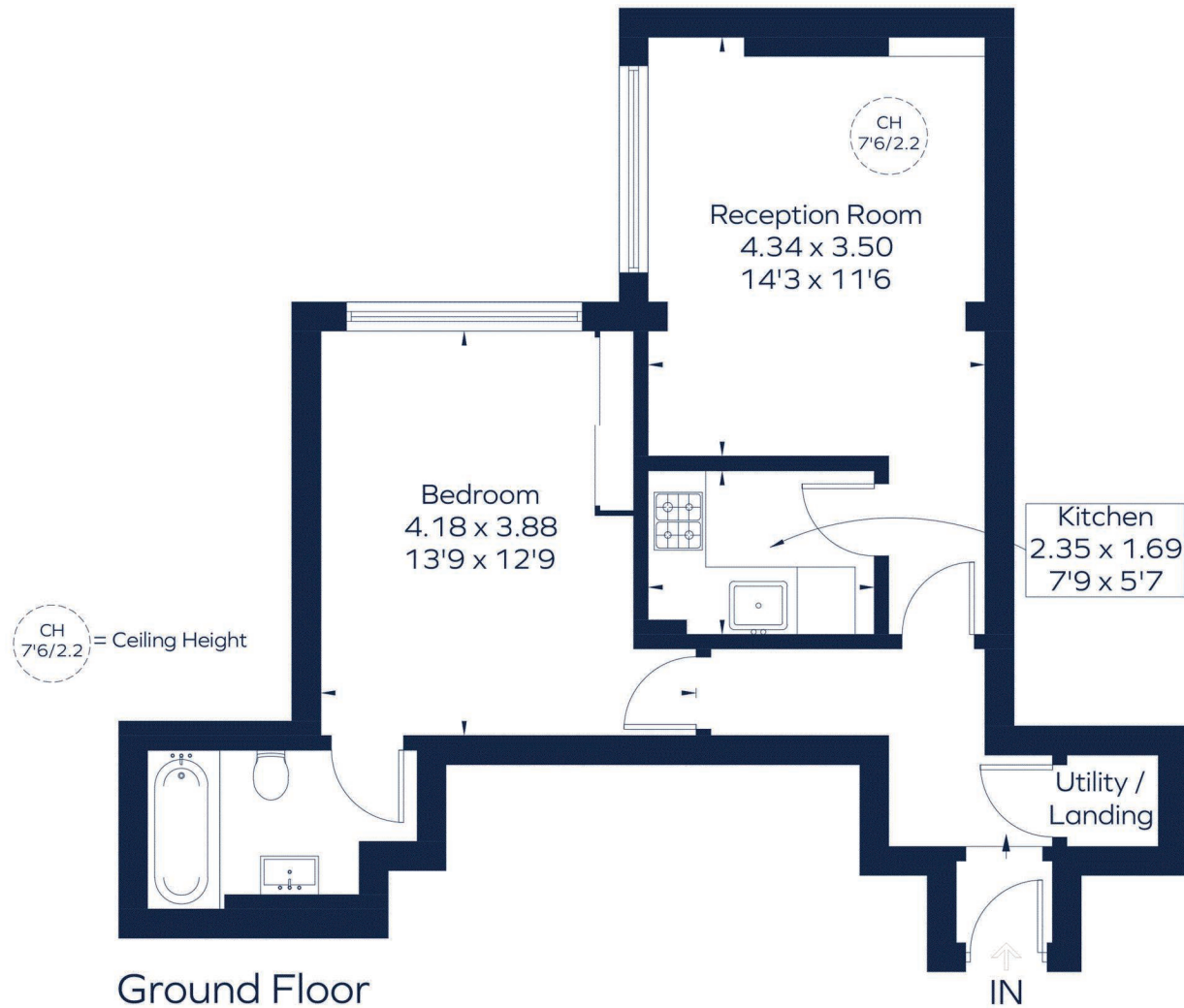
Beaufort Gardens is ideally located for the limitless amenities on the Brompton Road to include Harrods. The closest underground station is Knightsbridge (0.4 miles) offering the Piccadilly line. South Kensington is also close by (0.6 miles) with the additional Circle & District lines along with a good selection of shops and restaurants.



BEAUFORT GARDENS

Approximate Gross Internal Area

513 sq. ft. (47.7 sq. m.)



This plan is for layout guidance only. Not drawn to scale unless stated. Windows and door openings are approximate. Whilst every care is taken in the preparation of this plan, please check all dimensions, shapes and compass bearings before making any decisions reliant upon them.
ID 1067805

For Clarification

We wish to inform prospective tenants that we have prepared these particulars as a general guide and they have been confirmed as accurate by the landlord. We have not verified permissions, nor carried out a survey, tested the services, appliances and specific fittings. Room sizes are approximate and measurement figures rounded: they are taken between internal wall surfaces and therefore include cupboards/shelves, etc. Accordingly, they should not be relied upon for

carpets and furnishings. It should also be noted that all fixtures and fittings, carpeted, curtains/blinds, kitchen equipment and garden statuary, whether fitted or not, are deemed removable by the landlord unless specifically itemised with these particulars. Please enquire in office or on our website for details on holding deposit and tenancy deposit figures.

