



STANHOPE GARDENS KNIGHTSBRIDGE SW7
£1,274 PER WEEK AVAILABLE 10/04/2024




Hamptons

THE HOME EXPERTS

{ THE PARTICULARS

**Stanhope Gardens Knightsbridge
SW7**

**£1,274 Per Week
Furnished**

 **2 Bedrooms**
 **2 Bathrooms**
 **1 Reception**

Features

- Two Bedrooms, - Wood Floor, - Two Bathrooms, - Furnished, - Council Tax Band G, - Utility Bills Included

Council Tax

Council Tax Band G

Hamptons

168 Brompton Road
Knightsbridge, London, SW3 1HW
020 7584 2014
KnightsbridgeLettings@hamptons.co.uk
www.hamptons.co.uk

{ A 2 DOUBLE BEDROOM APARTMENT IDEALLY LOCATED IN SOUTH KENSINGTON

The Property

A well presented two double bedroom apartment set on the ground and lower ground floor of this desirable period building. Comprising open place kitchen with reception with dark wood floor and bay window on the ground floor of the apartment. Well dressed bedroom with built in cupboard on the ground floor. One further double bedroom with en-suite bathroom and a further bathroom. Available now furnished with utility bills included

Location

Benefiting from close proximity to both Gloucester Road underground station (0.1 miles away) & South Kensington (0.4 miles away) offering Circle & District lines along with the Piccadilly line providing easy travel.



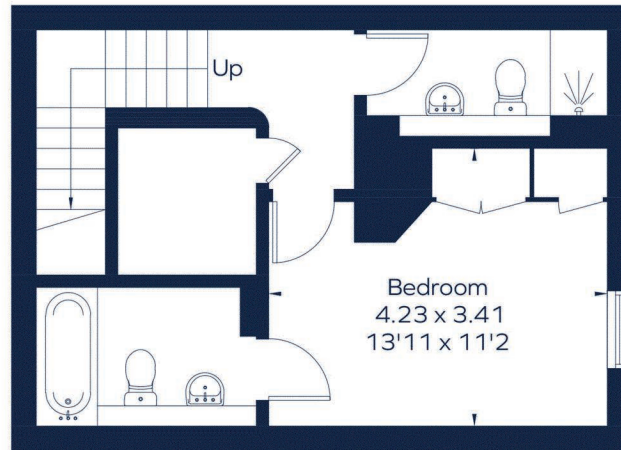
STANHOPE GARDENS

Approximate Gross Internal Area

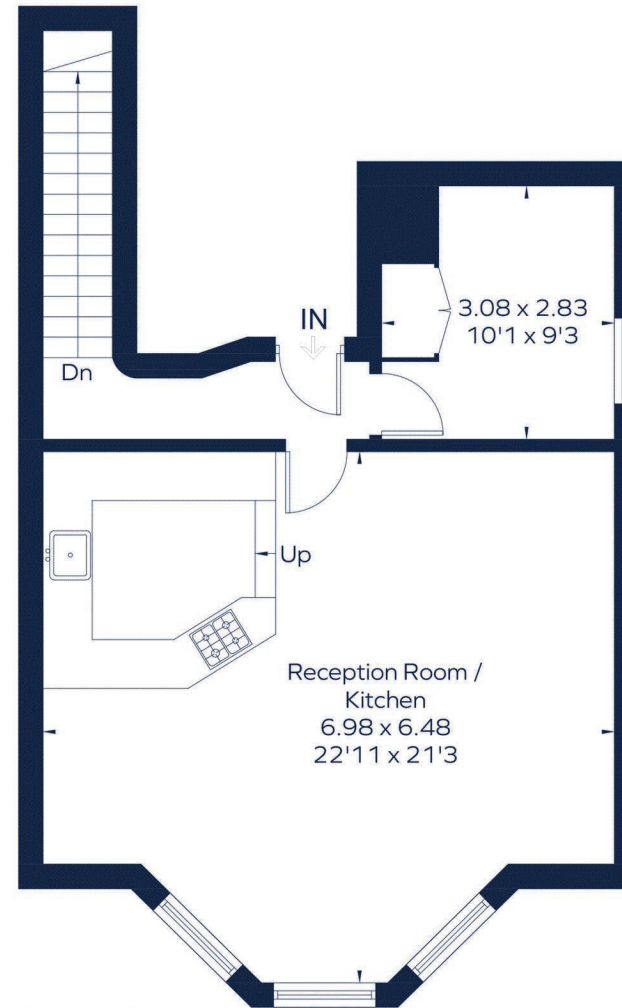
Lower Ground floor = 365 sq. ft. (33.9 sq. m.)

Ground floor = 611 sq. ft. (56.8 sq. m.)

Total = 976 sq. ft. (90.7 sq. m.)



Lower Ground Floor



Ground Floor

This plan is for layout guidance only. Not drawn to scale unless stated. Windows and door openings are approximate. Whilst every care is taken in the preparation of this plan, please check all dimensions, shapes and compass bearings before making any decisions reliant upon them. ID 1065744

For Clarification

We wish to inform prospective tenants that we have prepared these particulars as a general guide and they have been confirmed as accurate by the landlord. We have not verified permissions, nor carried out a survey, tested the services, appliances and specific fittings. Room sizes are approximate and measurement figures rounded: they are taken between internal wall surfaces and therefore include cupboards/shelves, etc. Accordingly, they should not be relied upon for

carpets and furnishings. It should also be noted that all fixtures and fittings, carpeted, curtains/blinds, kitchen equipment and garden statuary, whether fitted or not, are deemed removable by the landlord unless specifically itemised with these particulars. Please enquire in office or on our website for details on holding deposit and tenancy deposit figures.

