



{ 2-4 HYDE PARK GATE SOUTH KENSINGTON
£2,400 PER WEEK AVAILABLE NOW

Hamptons

THE HOME EXPERTS

{ THE PARTICULARS

2-4 Hyde Park Gate South
Kensington SW7

£2,400 Per Week
Furnished

 1 Bedroom
 1 Bathroom
 1 Reception

Features

- Daily Cleaning (Monday – Friday), -
Weekly linen change, - Towel change twice
a week, - All utilities included, - Council Tax
Band G

Council Tax

Council Tax Band G

Hamptons

168 Brompton Road
Knightsbridge, London, SW3 1HW
020 7584 2014
KnightsbridgeLettings@hamptons.co.uk
www.hamptons.co.uk

{ STUNNING ONE BEDROOM APARTMENT OFFERING 1349FT LATERAL SPACE

The Property

A beautifully presented luxury one bedroom apartment offered furnished. Comprising large tastefully dressed reception room with dining area. The bedroom has a delightful en-suite bathroom with both bath and separate shower with a guest cloakroom well placed near to the reception room. Offering just short of 1350 squared feet of lateral living space. This larger than average apartment comes inclusive of utilities with facilities such as; daily cleaner, linen change and towel change. Available now furnished.

Location

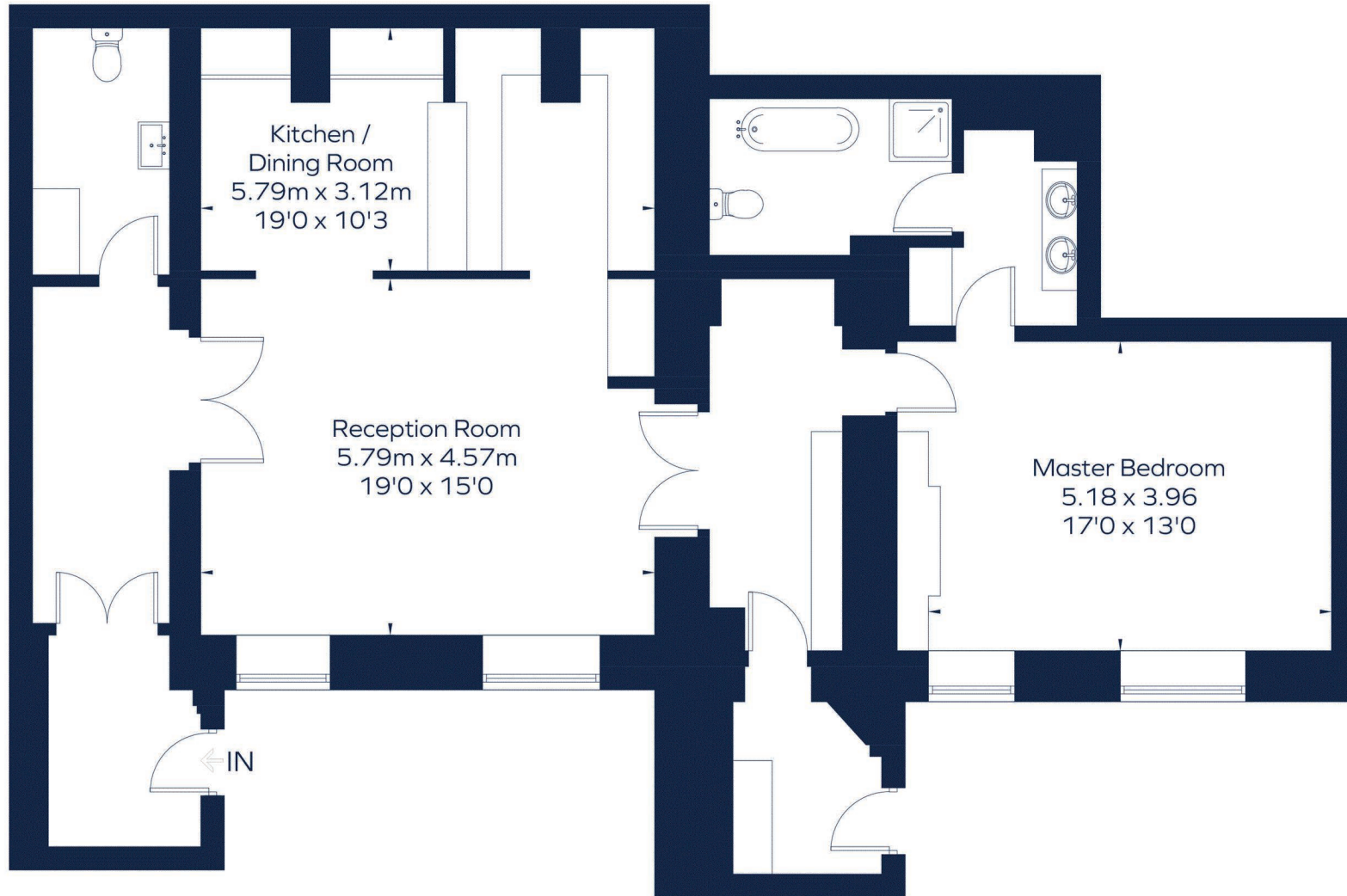
Hyde Park Gate is a cul-de-sac located just off Hyde Park. Close to transport links and amenities of both Kensington and Knightsbridge with High Street Kensington underground station is 0.6 miles away offering Circle & District Lines along with high street shopping outlets.



HYDE PARK GATE

Approximate Gross Internal Area

1349 sq. ft. (125.32 sq. m.)



Drawn for illustration and identification purposes only.
ID 1045676

For Clarification

We wish to inform prospective tenants that we have prepared these particulars as a general guide and they have been confirmed as accurate by the landlord. We have not verified permissions, nor carried out a survey, tested the services, appliances and specific fittings. Room sizes are approximate and measurement figures rounded: they are taken between internal wall surfaces and therefore include cupboards/shelves, etc. Accordingly, they should not be relied upon for

carpets and furnishings. It should also be noted that all fixtures and fittings, carpeted, curtains/blinds, kitchen equipment and garden statuary, whether fitted or not, are deemed removable by the landlord unless specifically itemised with these particulars. Please enquire in office or on our website for details on holding deposit and tenancy deposit figures.

