



**PARK LANE MAYFAIR W1K**  
**£6,930 PER WEEK** AVAILABLE 06/12/2022




**Hamptons**

THE HOME EXPERTS

# { THE PARTICULARS

**Park Lane Mayfair W1K**

**£6,930 Per Week  
Furnished**

 **2 Bedrooms**  
 **2 Bathrooms**  
 **1 Reception**

## Features

Two double bedrooms, Two en-suite bath/shower rooms, Spacious reception/dining room, Fully fitted open-plan kitchen, 24 hour concierge with CCTV, Individually controlled air conditioning, Valet parking at an extra cost, Lift access (step free), In-house gym, Communal atrium for dining, 24 hour in-room dining, In-room spa treatments

## Hamptons

168 Brompton Road  
Knightsbridge, London, SW3 1HW  
020 7584 2014  
KnightsbridgeLettings@hamptons.co.uk  
www.hamptons.co.uk

A luxurious two bedroom apartment in Mayfair.

## The Property

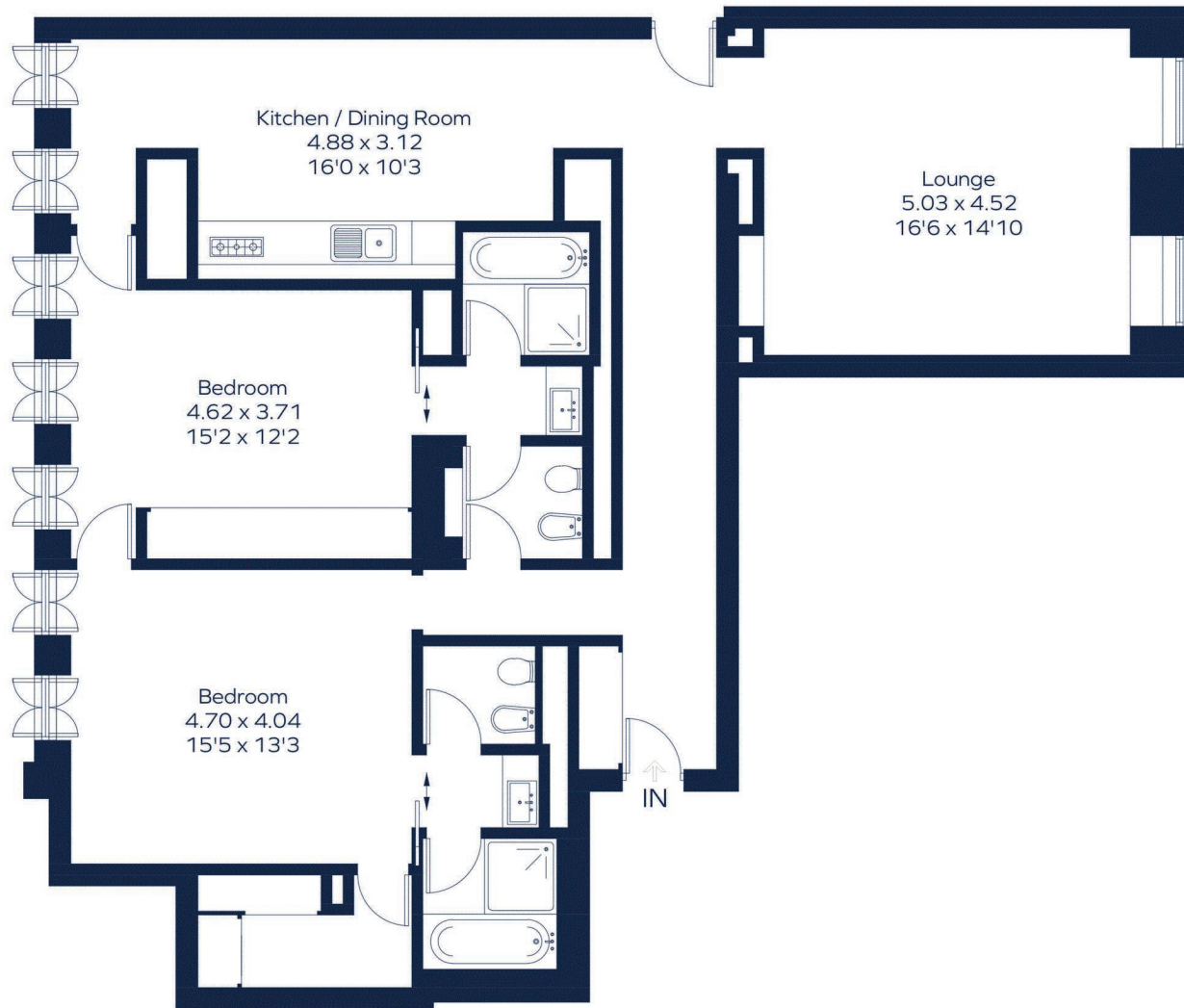
A luxurious two double bedroom apartment in Mayfair offering a sophisticated lifestyle in one of London's most exclusive addresses. The apartment offers en-suite bath/shower rooms to both bedrooms, a fully equipped open-plan kitchen and spacious reception with dining area. The apartment also benefits from individually controlled air conditioning, triple glazed windows, 24 hour concierge, with full CCTV, lift access to all floors and daily house keeping service. Further benefits are an in-house gym and communal atrium for dining for breakfast, lunch and dinner etc. In-room spa treatments are also available. There is also valet parking available at an extra cost.



{ **A LUXURIOUS TWO BEDROOM APARTMENT IN  
PRIME MAYFAIR.**

# GROSVENOR APARTMENTS

Approximate Gross Internal Area = 1438 sq. ft. (133.6 sq. m.)



This plan is for layout guidance only. Not drawn to scale unless stated. Windows and door openings are approximate. Whilst every care is taken in the preparation of this plan, please check all dimensions, shapes and compass bearings before making any decisions reliant upon them. ID 826684

## For Clarification

We wish to inform prospective tenants that we have prepared these particulars as a general guide and they have been confirmed as accurate by the landlord. We have not verified permissions, nor carried out a survey, tested the services, appliances and specific fittings. Room sizes are approximate and measurement figures rounded: they are taken between internal wall surfaces and therefore

include cupboards/shelves, etc. Accordingly, they should not be relied upon for carpets and furnishings. It should also be noted that all fixtures and fittings, carpeted, curtains/blinds, kitchen equipment and garden statuary, whether fitted or not, are deemed removable by the landlord unless specifically itemised with these particulars.

