






RADNOR TERRACE LONDON W14
£5,500 PER MONTH AVAILABLE 28/01/2026

Hamptons
THE HOME EXPERTS

{ THE PARTICULARS

Radnor Terrace London W14

£5,500 Per Month
Furnished

 2 Bedrooms
 2 Bathrooms
 1 Reception

Features

- Two bedrooms, - Two En-suite
Bathrooms, - Guest WC, - Split level, - 24
hour concierge, - Privet gym/ Cinema
room, - Swimming pool, - Lift, - Furnished

Council Tax

Council Tax Band B

Hamptons
8 Hornton Street
Kensington, London, W8 4NW
020 7937 9372
KensingtonLettings@hamptons.co.uk
www.hamptons.co.uk

{ A BEAUTIFULLY PRESENTED SPLIT LEVEL TWO BEDROOM APARTMENT

The Property

A beautifully presented split level two bedroom apartment finished to a high standard within one of Kensington's most sought after portered developments. The property features a spacious reception room with floor to ceiling windows, wood flooring and space for both dining and entertaining. The contemporary kitchen is fully fitted with high-end appliances. There are two generous double bedrooms both benefiting from en-suite bathrooms and ample storage. There is also a modern guest bathroom and a private patio ideal for outdoor seating. Residents benefit from excellent on-site amenities, including a 24-hour concierge, lift access, private gym, swimming pool, cinema room, and secure underground parking by separate negotiation. Offered furnished

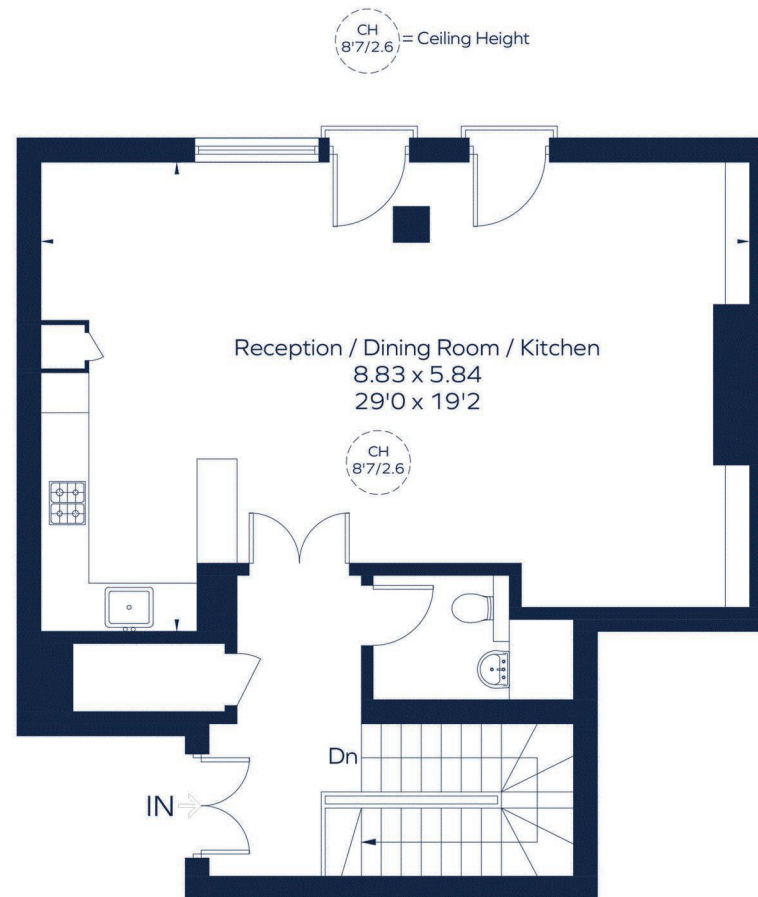
Location

Bridgeman House is situated at the end of Kensington High Street, with access to Kensington Olympia overland and tube station and High Street Kensington (District and Circle lines).



Approximate Gross Internal Area

Ground floor = 725 sq. ft. (67.4 sq. m.)



Ground Floor

For Clarification

carpets and furnishings. It should also be noted that all fixtures and fittings, carpeted, curtains/blinds, kitchen equipment and garden statuary, whether fitted or not, are deemed removable by the landlord unless specifically itemised with these particulars. Please enquire in office or on our website for details on holding deposit and tenancy deposit figures.

