






{ LEXHAM GARDENS LONDON W8
£4,500 PER MONTH AVAILABLE 28/01/2026

Hamptons
THE HOME EXPERTS

{ THE PARTICULARS

Lexham Gardens London W8

£4,500 Per Month
Furnished

 2 Bedrooms
 2 Bathrooms
 1 Reception

Features

- Two Bedrooms, - Two Bathrooms, - 1st Floor (lift), - Terrace, - Recently Refurbished, - High End Furnished, - Internet included in rent

Council Tax

Council Tax Band F

Hamptons
8 Hornton Street
Kensington, London, W8 4NW
020 7937 9372
KensingtonLettings@hamptons.co.uk
www.hamptons.co.uk

{ A RECENTLY REFURBISHED TWO BEDROOM APARTMENT WITH TERRACE

The Property

A beautifully presented recently refurbished two bedroom two bathroom apartment with terrace on the 1st floor (with lift) of this well maintained pretty white stucco fronted building in Kensington. The apartment offers a spacious beautifully designed reception room with access to a lovely private terrace looking over Lexham Gardens. There is a separate modern kitchen, principal bedroom with en-suite, second good size bedroom and family bathroom. Internet is included in the rent. Offered furnished.

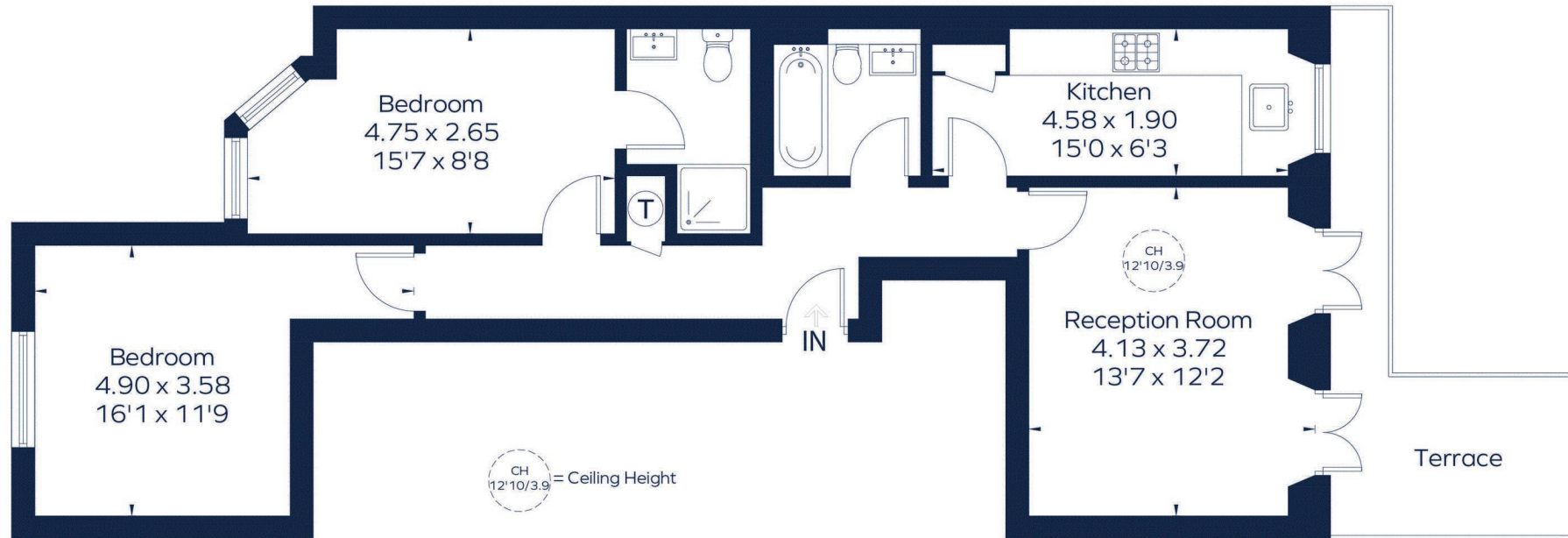
Location

Lexham Gardens is a highly sought after street in Kensington, conveniently located near High Street Kensington (Circle and District lines), Hyde Park, Gloucester Road, and Earl's Court tube stations, with excellent access to the A4 and central London.



LEXHAM GARDENS

Approximate Gross Internal Area = 738 sq. ft. (68.6 sq. m.)



First Floor

This plan is for layout guidance only. Not drawn to scale unless stated. Windows and door openings are approximate. Whilst every care is taken in the preparation of this plan, please check all dimensions, shapes and compass bearings before making any decisions reliant upon them.
ID 1242263

For Clarification

We wish to inform prospective tenants that we have prepared these particulars as a general guide and they have been confirmed as accurate by the landlord. We have not verified permissions, nor carried out a survey, tested the services, appliances and specific fittings. Room sizes are approximate and measurement figures rounded: they are taken between internal wall surfaces and therefore include cupboards/shelves, etc. Accordingly, they should not be relied upon for

carpets and furnishings. It should also be noted that all fixtures and fittings, carpeted, curtains/blinds, kitchen equipment and garden statuary, whether fitted or not, are deemed removable by the landlord unless specifically itemised with these particulars. Please enquire in office or on our website for details on holding deposit and tenancy deposit figures.

