



BENSON HOUSE RADNOR TERRACE LONDON
£3,300 PER MONTH AVAILABLE 02/07/2025

Hamptons
THE HOME EXPERTS

{ THE PARTICULARS

Benson House Radnor Terrace
London W14

£3,300 Per Month
Furnished

 1 Bedroom
 1 Bathroom
 1 Reception

Features

- One Bedroom, - One Bathroom, - 2nd Floor/Lift, - Air Cooling, - Under Floor Heating, - Utility Cupboard, - Concierge, - Gym/Home Cinema/Pool/Sauna, - No parking

Council Tax

Council Tax Band F

Hamptons
8 Hornton Street
Kensington, London, W8 4NW
020 7937 9372
KensingtonLettings@hamptons.co.uk
www.hamptons.co.uk

{ A SUPERB ONE BEDROOM APARTMENT WITH PORTER

The Property

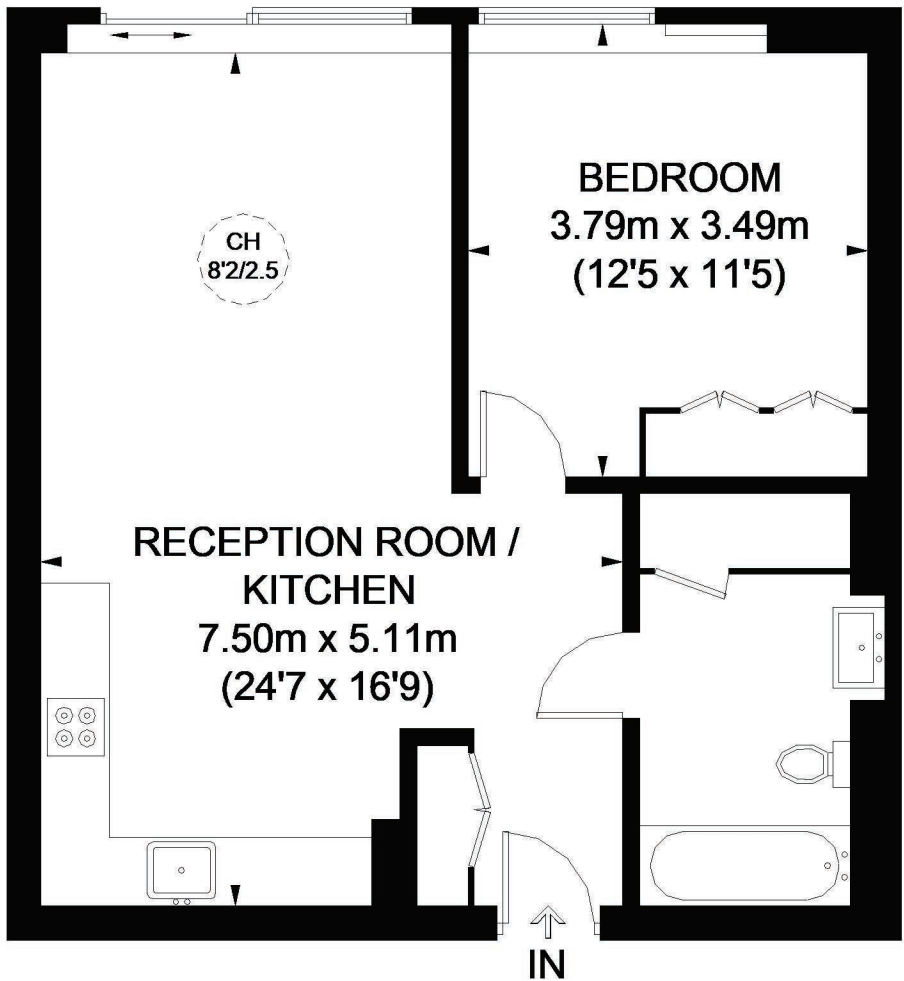
A superb one bedroom apartment on the 2nd floor (with lift) of this exclusive development off Kensington High Street. The apartment comprises open-plan kitchen reception with fully fitted kitchen, wood floors and views of the communal courtyard. The bedroom offers good storage and there is a large bathroom with utility cupboard. This fantastic development offers access to a stunning communal gym, sauna, steam room, urban retreat spa, indoor swimming pool, cinema and concierge. Offered furnished.

Location

Benson House is situated at the end of Kensington High Street, with access to Kensington Olympia overland and tube station and High Street Kensington (District and Circle lines).



BENSON HOUSE



SECOND FLOOR

APPROXIMATE GROSS INTERNAL AREA
579 SQ. FT. (53.8 SQ. M.)

 = CEILING HEIGHT

This plan is for layout guidance only. Not drawn to scale unless stated. Windows and door openings are approximate. Whilst every care is taken in the preparation of this plan, please check all dimensions, shapes and compass bearings before making any decisions reliant upon them. Please be advised that Hamptons International / our agents have not seen or reviewed any building regulations or planning permissions in relation to works carried out to the property (ID253379).

For Clarification

We wish to inform prospective tenants that we have prepared these particulars as a general guide and they have been confirmed as accurate by the landlord. We have not verified permissions, nor carried out a survey, tested the services, appliances and specific fittings. Room sizes are approximate and measurement figures rounded: they are taken between internal wall surfaces and therefore include cupboards/shelves, etc. Accordingly, they should not be relied upon for

carpets and furnishings. It should also be noted that all fixtures and fittings, carpeted, curtains/blinds, kitchen equipment and garden statuary, whether fitted or not, are deemed removable by the landlord unless specifically itemised with these particulars. Please enquire in office or on our website for details on holding deposit and tenancy deposit figures.

