





KENSINGTON CHURCH WALK LONDON W8
£3,200 PER MONTH AVAILABLE 30/07/2025

Hamptons
THE HOME EXPERTS

{ THE PARTICULARS

Kensington Church Walk London
W8

£3,200 Per Month
Unfurnished

 2 Bedrooms
 1 Bathroom
 1 Reception

Features

- Two Bedrooms, - One Bathroom, -
Ground Floor, - Patio Garden, -
Washer/Dryer, - Dishwasher, - Unfurnished

Council Tax

Council Tax Band F

Hamptons
8 Hornton Street
Kensington, London, W8 4NW
020 7937 9372
KensingtonLettings@hamptons.co.uk
www.hamptons.co.uk

{ A SUPER TWO BEDROOM APARTMENT WITH PATIO GARDEN

The Property

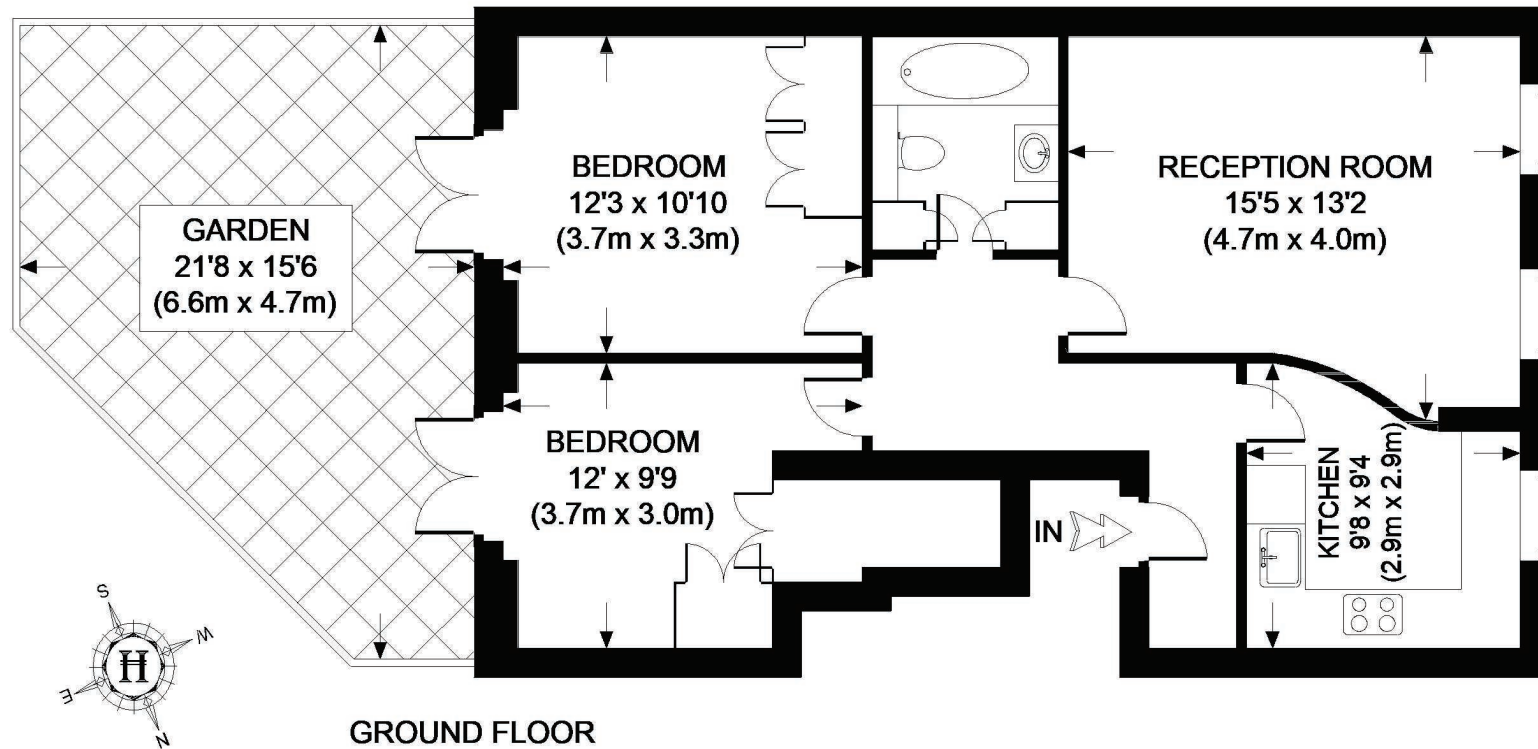
A super two bedroom apartment set on the ground floor of this gated building, tucked away just behind Kensington High Street. The apartment comprises spacious reception room, adjoining fully equipped kitchen including dishwasher and washer/dryer, two bedrooms and a modern bathroom. There is access via the bedrooms to a lovely spacious patio garden. This apartment benefits from wooden flooring throughout and is offered unfurnished.

Location

Kensington Church Walk is located moments from the boutique shops of Kensington Church Street and the many amenities of Kensington High Street, including the District and Circle lines.



KENSINGTON CHURCH WALK



**APPROXIMATE GROSS INTERNAL AREA =
TOTAL = 703 SQ. FT. (65.3 SQ. M.)**

This plan is for layout guidance only. Not drawn to scale unless stated. Windows & door openings are approximate. Whilst every care is taken in the preparation of this plan, please check all dimensions, shapes & compass bearings before making any decisions reliant upon them. Please be advised that Hamptons International / our agents have not seen or reviewed any building regulations or planning permission in relation to works carried out to the property.

For Clarification

We wish to inform prospective tenants that we have prepared these particulars as a general guide and they have been confirmed as accurate by the landlord. We have not verified permissions, nor carried out a survey, tested the services, appliances and specific fittings. Room sizes are approximate and measurement figures rounded: they are taken between internal wall surfaces and therefore include cupboards/shelves, etc. Accordingly, they should not be relied upon for

carpets and furnishings. It should also be noted that all fixtures and fittings, carpeted, curtains/blinds, kitchen equipment and garden statuary, whether fitted or not, are deemed removable by the landlord unless specifically itemised with these particulars. Please enquire in office or on our website for details on holding deposit and tenancy deposit figures.

Energy Efficiency Rating		
Energy Efficiency Rating	Current	Potential
A		
B		
C		
D		
E		
F		
G		
69	69	69
England & Wales		

