



VICARAGE GATE LONDON W8
£550 PER WEEK AVAILABLE 12/08/2025

Hamptons
THE HOME EXPERTS

{ THE PARTICULARS

Vicarage Gate London W8

£550 Per Week
Furnished

 1 Bathroom
 1 Reception

Features

- Studio apartment, - One Bathroom, - 4th Floor/Lift, - Communal Heating, - Porter, - Furnished

Council Tax

Council Tax Band D

Hamptons
8 Hornton Street
Kensington, London, W8 4NW
020 7937 9372
KensingtonLettings@hamptons.co.uk
www.hamptons.co.uk

{ A SPACIOUS STUDIO APARTMENT IN A POPULAR MANSION BLOCK WI PORTER

The Property

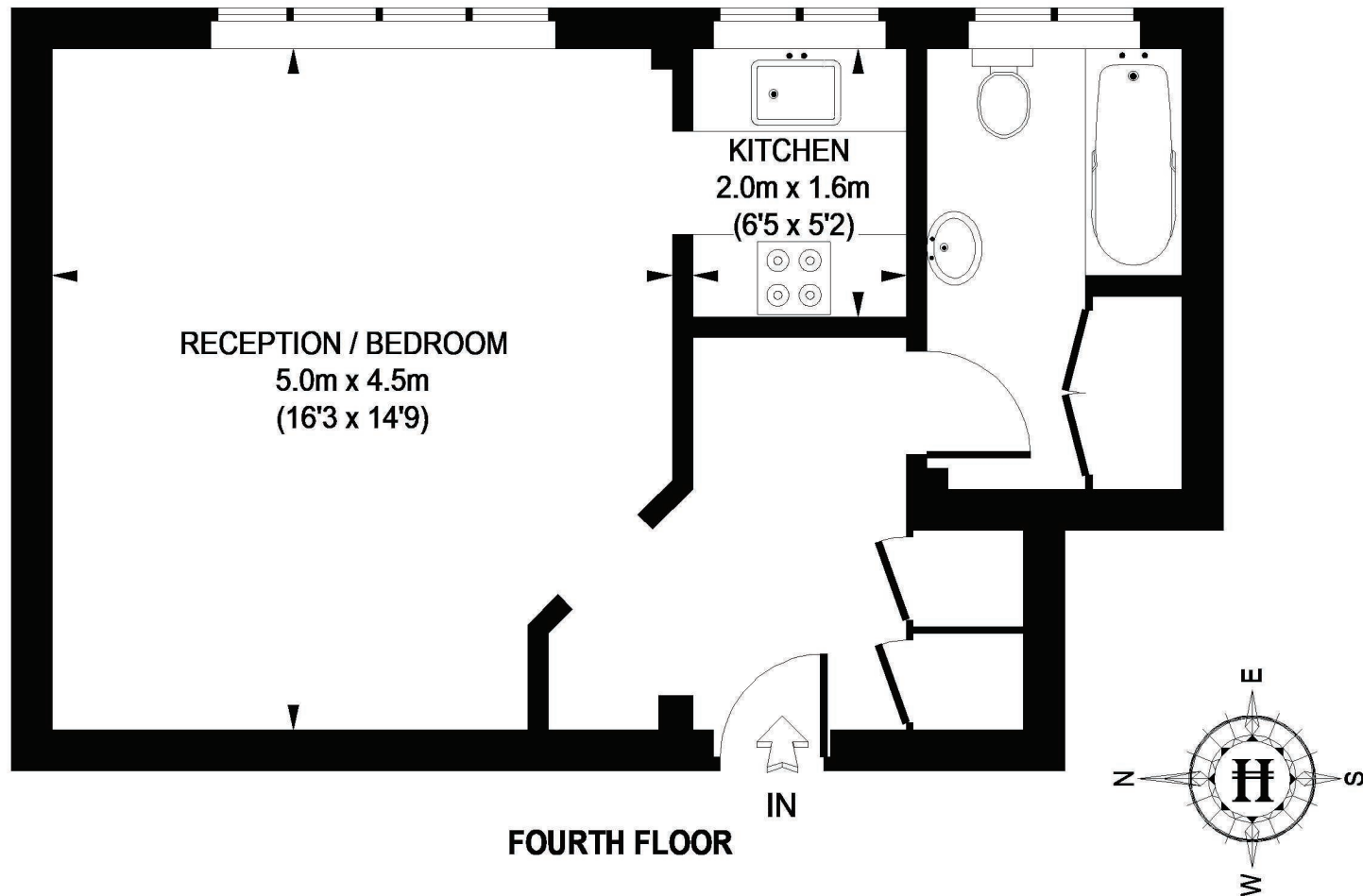
A spacious studio apartment set on the fourth floor (with lift) of this popular mansion block in a very sought after area of Kensington. The apartment benefits from wooden floors, a separate kitchen area and plenty of storage. The building is well maintained with porter and there is communal heating. Offered furnished.

Location

Situated within walking distance from a range of restaurants and grocery stores, as well as the many other amenities High Street Kensington has to offer. The nearest underground stations are Kensington High Street (District and Circle lines) and Notting Hill (District, Circle and Central lines).



VICARAGE COURT



FOURTH FLOOR

APPROXIMATE GROSS INTERNAL AREA = 420 SQ. FT. (39 SQ. M.)

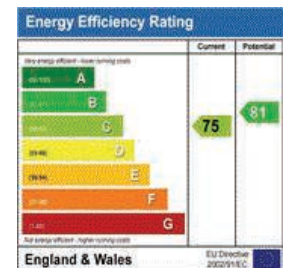
This plan is for layout guidance only. Not drawn to scale unless stated. Windows & door openings are approximate. Whilst every care is taken in the preparation of this plan, please check all dimensions, shapes & compass bearings before making any decisions reliant upon them.

Please be advised that Hamptons International / our agents have not seen or reviewed any building regulations or planning permission in relation to works carried out to the property. (ID26349)

For Clarification

We wish to inform prospective tenants that we have prepared these particulars as a general guide and they have been confirmed as accurate by the landlord. We have not verified permissions, nor carried out a survey, tested the services, appliances and specific fittings. Room sizes are approximate and measurement figures rounded: they are taken between internal wall surfaces and therefore include cupboards/shelves, etc. Accordingly, they should not be relied upon for

carpets and furnishings. It should also be noted that all fixtures and fittings, carpeted, curtains/blinds, kitchen equipment and garden statuary, whether fitted or not, are deemed removable by the landlord unless specifically itemised with these particulars. Please enquire in office or on our website for details on holding deposit and tenancy deposit figures.





Awaiting Photograph