



{ ALLEN STREET LONDON W8
£9,500 PER MONTH AVAILABLE 17/06/2025

Hamptons
THE HOME EXPERTS

{ THE PARTICULARS

Allen Street London W8

£9,500 Per Month
Unfurnished

 4 Bedrooms
 2 Bathrooms
 3 Receptions

Features

- Four Bedrooms, - Two Bathrooms, - Guest
WC, - Garden, - Unfurnished, - Over 2000
sq ft, - Pet Friendly
Council Tax
Council Tax Band H

Hamptons
8 Hornton Street
Kensington, London, W8 4NW
020 7937 9372
KensingtonLettings@hamptons.co.uk
www.hamptons.co.uk

{ A SPACIOUS FOUR BEDROOM TRADITIONAL FAMILY HOUSE WITH GARDEN

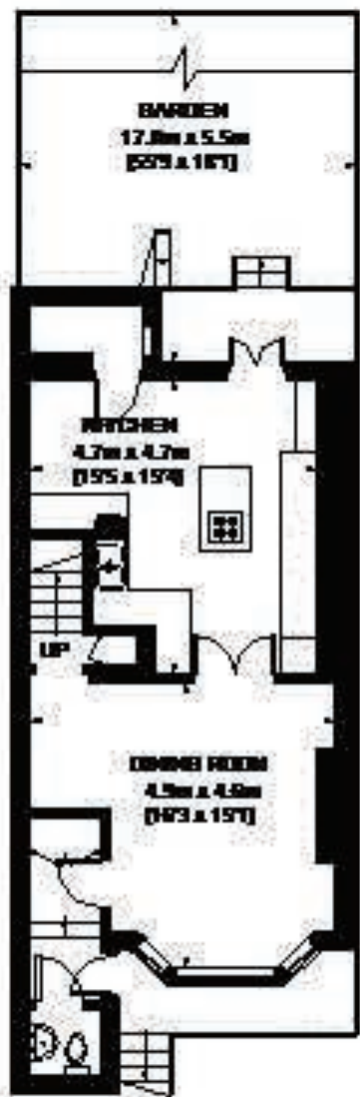
The Property

A spacious traditional four bedroom family house situated on this wonderful tree lined street just moments from Kensington High Street. The house is entered on the raised ground floor comprising a bright double reception room with lovely views over the garden and wooden floors. On the lower floor there is a spacious eat-in kitchen with large adjoining dining room, guest WC and access to a private good sized garden. The first floor is taken fully by a spacious principal bedroom suite with large en-suite bathroom and the second floor offers three bedrooms and a family bathroom. The house is offered unfurnished.

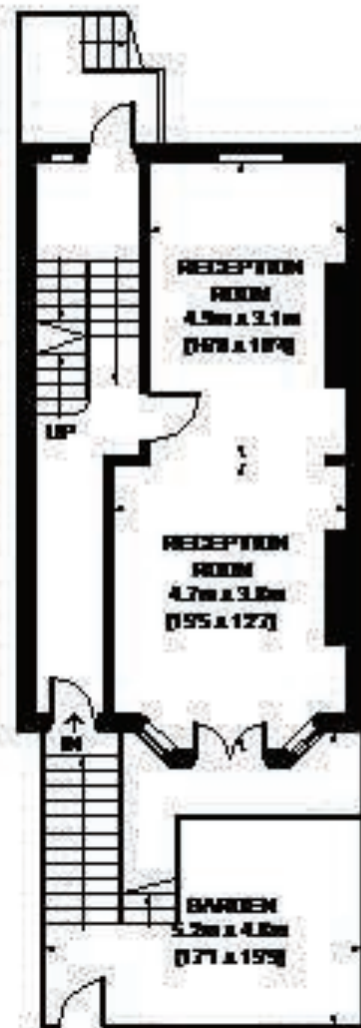
Location

Allen Street is situated moments from the array of shops, restaurants and bars of Kensington High Street and the transport links at High Street Kensington station (Circle and District lines). The open spaces of Kensington Gardens and Hyde Park are close by.

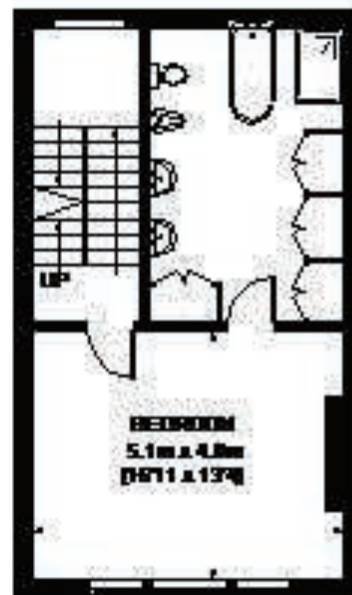




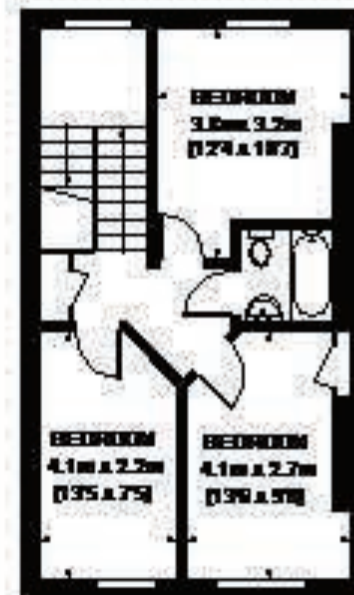
GROUND FLOOR



RAISED GROUND FLOOR



FIRST FLOOR



SECOND FLOOR

APPROXIMATE GROSS INTERNAL AREA
GROUND FLOOR - 538 SQ. FT. (49.9 SQ. M.)
RAISED GROUND FLOOR - 507 SQ. FT. (47.1 SQ. M.)
FIRST FLOOR - 488 SQ. FT. (45.4 SQ. M.)
SECOND FLOOR - 488 SQ. FT. (45.4 SQ. M.)
TOTAL - 2021 SQ. FT. (187.9 SQ. M.)

For Clarification

We wish to inform prospective tenants that we have prepared these particulars as a general guide and they have been confirmed as accurate by the landlord. We have not verified permissions, nor carried out a survey, tested the services, appliances and specific fittings. Room sizes are approximate and measurement figures rounded: they are taken between internal wall surfaces and therefore include cupboards/shelves, etc. Accordingly, they should not be relied upon for

carpets and furnishings. It should also be noted that all fixtures and fittings, carpeted, curtains/blinds, kitchen equipment and garden statuary, whether fitted or not, are deemed removable by the landlord unless specifically itemised with these particulars. Please enquire in office or on our website for details on holding deposit and tenancy deposit figures.

