



**CONSORT COURT WRIGHTS LANE LONDON W8**  
**£1,000 PER WEEK** AVAILABLE 08/08/2025




**Hamptons**  
THE HOME EXPERTS



# { THE PARTICULARS

Consort Court Wrights Lane  
London W8

£1,000 Per Week  
Unfurnished

 2 Bedrooms  
 2 Bathrooms  
 1 Reception

## Features

- Two Bedrooms, - Two Bathrooms, - 2nd Floor/ Lift, - Communal Gym, - 24hr Porter, - Off Street Parking, - Unfurnished

## Council Tax

Council Tax Band H

Hamptons  
8 Hornton Street  
Kensington, London, W8 4NW  
020 7937 9372  
[KensingtonLettings@hamptons.co.uk](mailto:KensingtonLettings@hamptons.co.uk)  
[www.hamptons.co.uk](http://www.hamptons.co.uk)

# { A FANTASTIC TWO BEDROOM APARTMENT WITH PORTER AND PARKING

## The Property

A fantastic two bedroom apartment on the second floor with lift of this popular portered development in the heart of Kensington. The apartment comprises bright dual aspect reception room, separate adjoining kitchen, two double bedrooms and two bathrooms (one en-suite). The property benefits from a 24hr porter, communal gym and underground parking. Offered unfurnished.

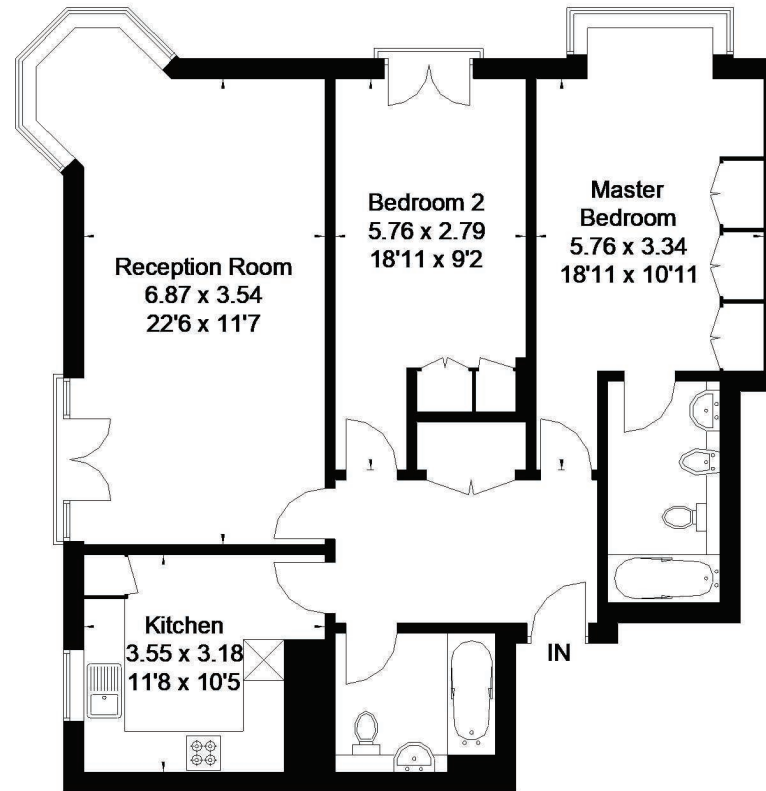
## Location

Consort Court is located moments from the shops, restaurants and transport links of Kensington High Street (circle and district lines).



# Consort Court, Wrights Lane, London

Approximate Gross Internal Area = 94 sq m / 1012 sq ft



Second Floor

FLOORPLANZ © 2014 0845 6344080 Ref: 131701

This plan is for layout guidance only. Drawn in accordance with RICS guidelines. Not drawn to scale unless stated. Windows & door openings are approximate. Whilst every care is taken in the preparation of this plan, please check all dimensions, shapes & compass bearings before making any decisions reliant upon them.

## For Clarification

We wish to inform prospective tenants that we have prepared these particulars as a general guide and they have been confirmed as accurate by the landlord. We have not verified permissions, nor carried out a survey, tested the services, appliances and specific fittings. Room sizes are approximate and measurement figures rounded: they are taken between internal wall surfaces and therefore include cupboards/shelves, etc. Accordingly, they should not be relied upon for

carpets and furnishings. It should also be noted that all fixtures and fittings, carpeted, curtains/blinds, kitchen equipment and garden statuary, whether fitted or not, are deemed removable by the landlord unless specifically itemised with these particulars. Please enquire in office or on our website for details on holding deposit and tenancy deposit figures.

