






REGENT COURT, LONDON W8
£950 PER WEEK AVAILABLE 21/04/2025

Hamptons
THE HOME EXPERTS

{ THE PARTICULARS

Regent Court, London W8

£950 Per Week
Unfurnished

 2 Bedrooms
 2 Bathrooms
 1 Reception

Features

- Two Bedrooms, - Two Bathrooms, - 5th floor/Lift, - Wooden Floors, - Porter, - Communal Gym, - Unfurnished

Council Tax

Council Tax Band H

Hamptons
8 Hornton Street
Kensington, London, W8 4NW
020 7937 9372
KensingtonLettings@hamptons.co.uk
www.hamptons.co.uk

{ A WONDERFULLY BRIGHT 5TH FLOOR TWO BEDROOM FLAT

The Property

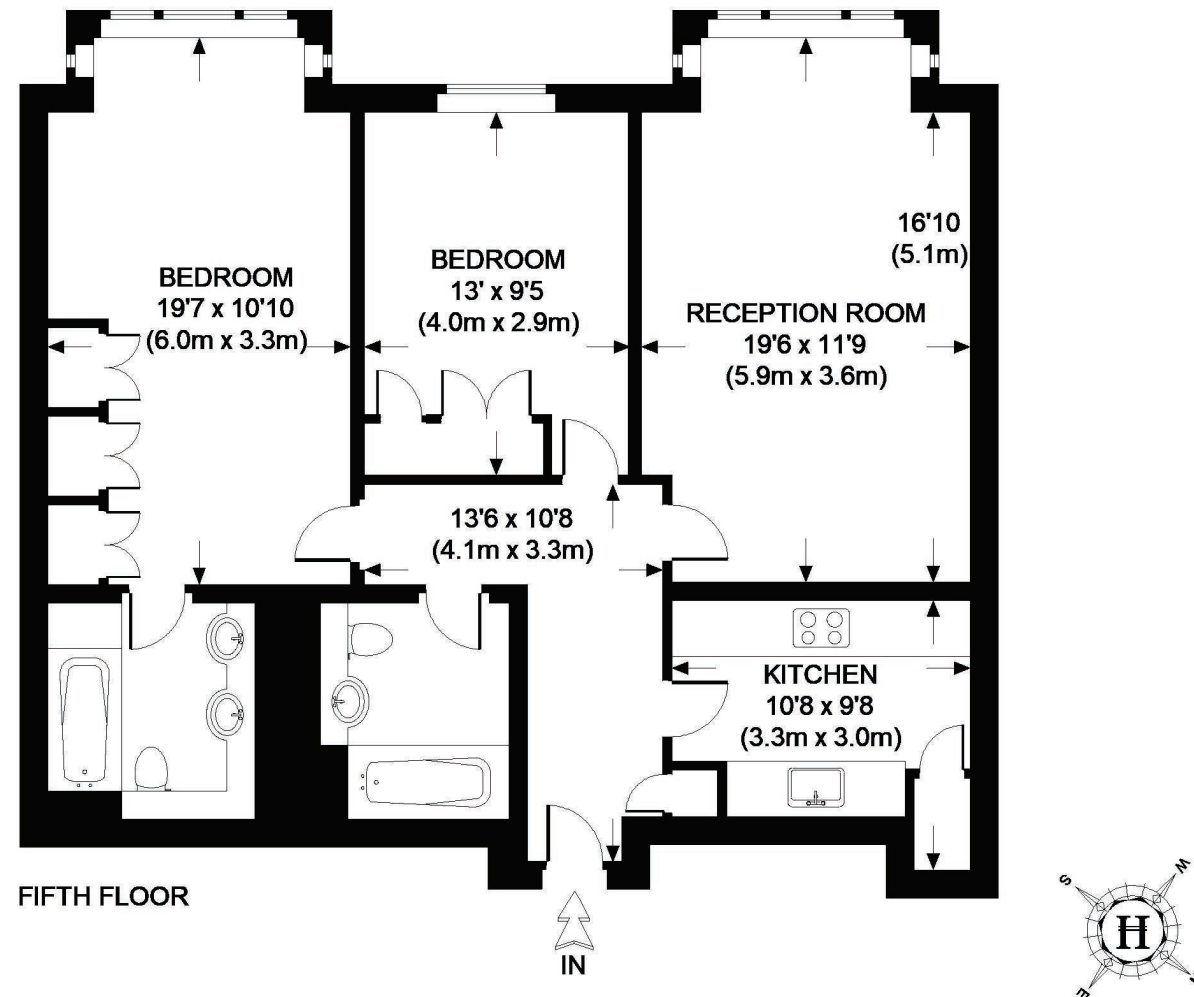
A wonderful and bright two bedroom two bathroom apartment set on the 5th floor (with lift) of this well maintained building in the heart of Kensington. The property comprises bright reception room, separate kitchen, principal bedroom with en-suite bathroom, second double bedroom with good storage and family bathroom. Well presented in excellent condition with wooden floors throughout. The development boasts 24hr porter and gymnasium. Offered unfurnished.

Location

Regent Court is part of the Royal Gate Development, located moments from the shops, restaurants and transport links of Kensington High Street.



REGENT COURT



APPROXIMATE GROSS INTERNAL AREA = 883 SQ.FT. (82 SQ. M.)

This plan is for layout guidance only. Not drawn to scale unless stated. Windows & door openings are approximate. Whilst every care is taken in the preparation of this plan, please check all dimensions, shapes & compass bearings before making any decisions reliant upon it. Please be advised that Hamptons International / our agents have not seen or reviewed any building regulations or planning permission in relation to works carried out to the property.

For Clarification

We wish to inform prospective tenants that we have prepared these particulars as a general guide and they have been confirmed as accurate by the landlord. We have not verified permissions, nor carried out a survey, tested the services, appliances and specific fittings. Room sizes are approximate and measurement figures rounded: they are taken between internal wall surfaces and therefore include cupboards/shelves, etc. Accordingly, they should not be relied upon for

carpets and furnishings. It should also be noted that all fixtures and fittings, carpeted, curtains/blinds, kitchen equipment and garden statuary, whether fitted or not, are deemed removable by the landlord unless specifically itemised with these particulars. Please enquire in office or on our website for details on holding deposit and tenancy deposit figures.

